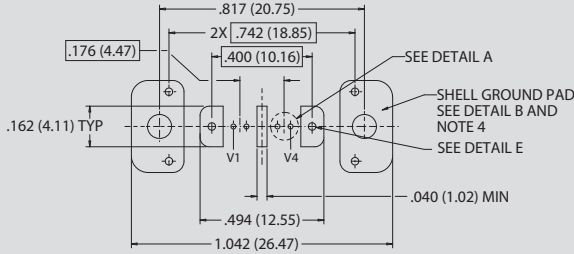


# "ZERO-CROSSTALK" M83513 Micro-D VersaLink™ Connectors

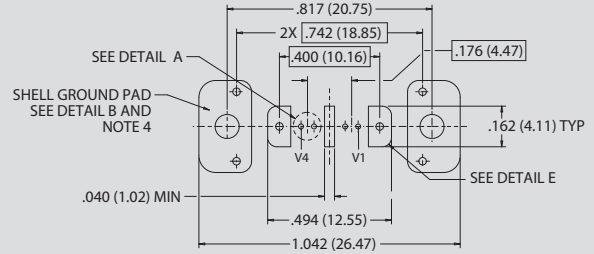


## GVLM-1004: GVLMS-BS, Board Mount Straight, Ground-Isolated Connector PCB Footprints

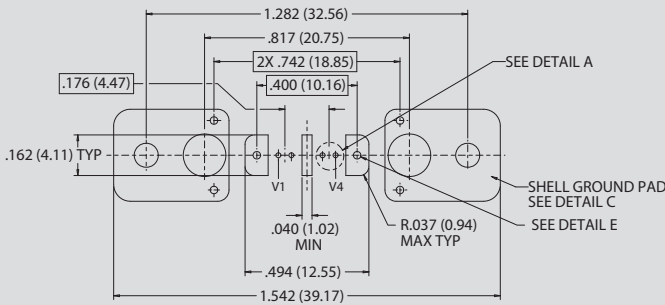
MICRO-D VERSALINK CONNECTORS



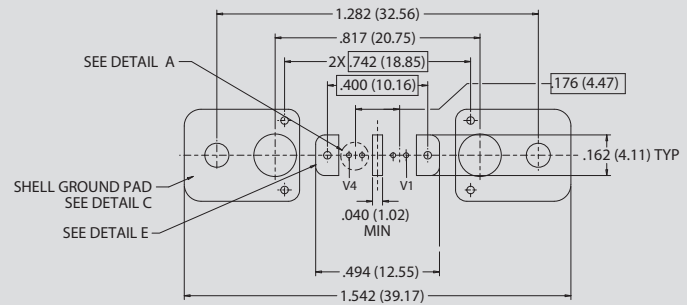
**Plug Layout 2-0  
PN and R1-R6 Hardware**



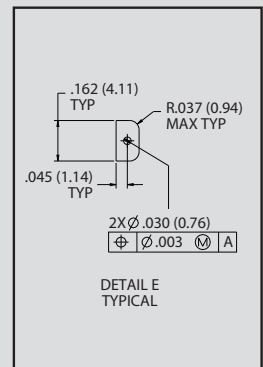
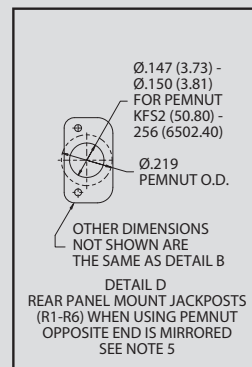
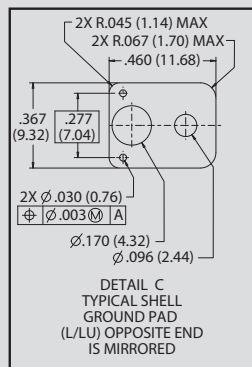
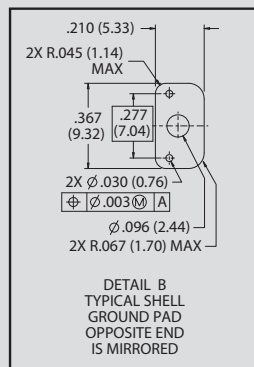
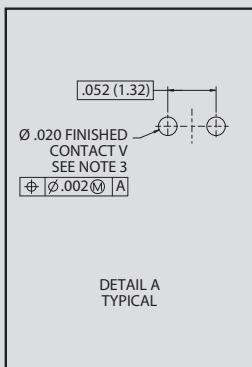
**Receptacle Layout 2-0  
PN and R1-R6 Hardware**



**Plug Layout 2-0  
L/LU Hardware**



**Receptacle Layout 2-0  
L/LU Hardware**



### NOTES

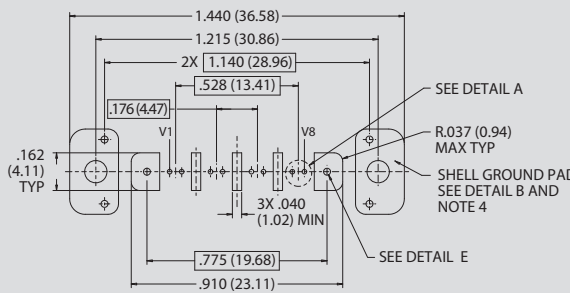
1. Patterns shown are for connector mounting side of PCB
2. Reference GVLMS-BS for connector details.
3. Reference application notes AN0005 for optimal performance
4. PEM nuts are the recommended solution for rear mount hardware, see detail "D". When using loose nuts to secure to panel, use the same shell ground pad as shown in detail "B".

# "ZERO-CROSSTALK" M83513 Micro-D VersaLink™ Connectors

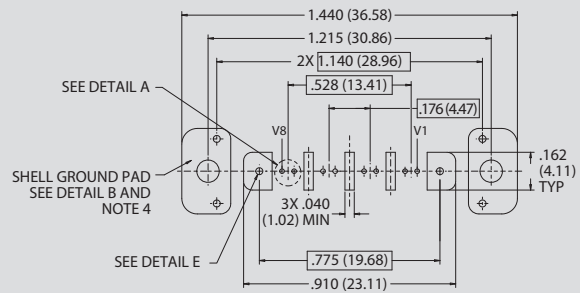


## GVLM-1004: GVLMS-BS, Board Mount Straight, Ground-Isolated Connector PCB Footprints

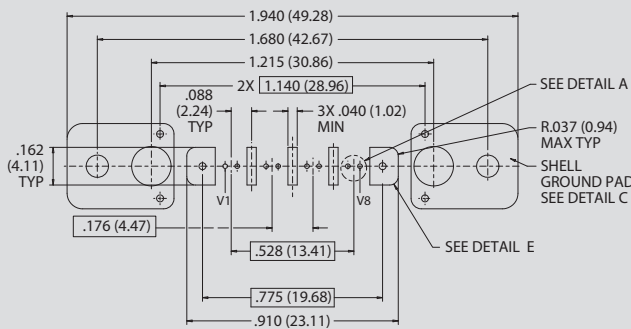
MICRO-D VERSALINK CONNECTORS



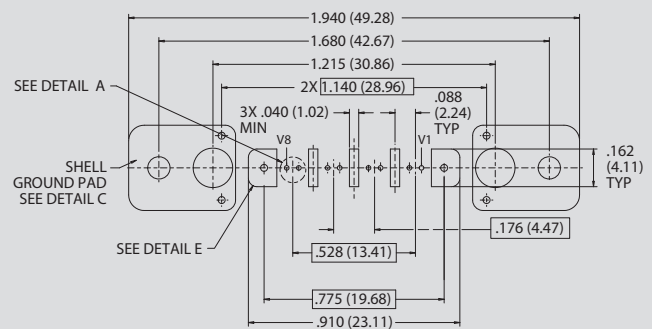
**Plug Layout 4-0  
PN and R1-R6 Hardware**



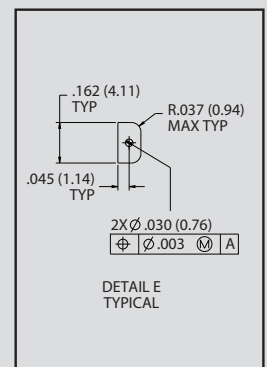
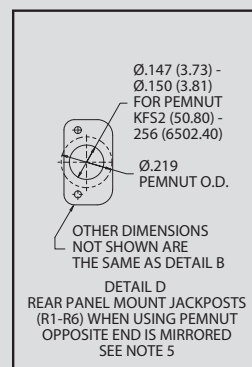
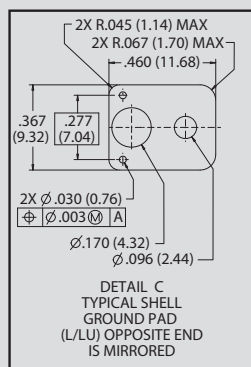
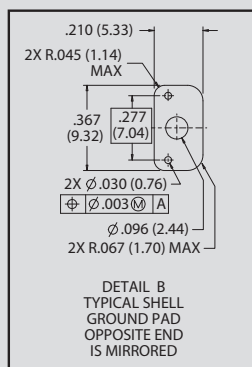
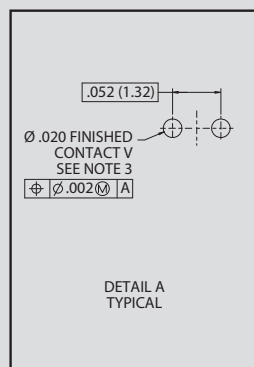
**Receptacle Layout 4-0  
PN and R1-R6 Hardware**



**Plug Layout 4-0  
L/LU Hardware**



**Receptacle Layout 4-0  
L/LU Hardware**



### NOTES

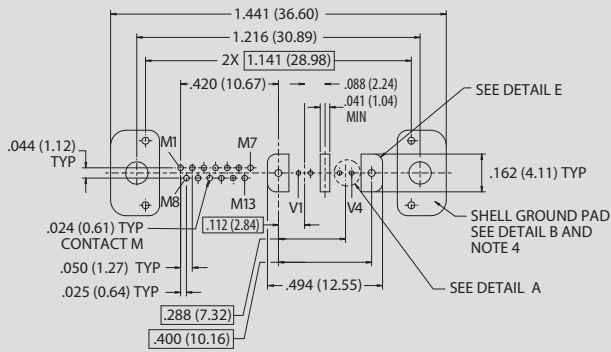
- Patterns shown are for connector mounting side of PCB
- Reference GVLMS-BS for connector details.
- Reference application notes AN0005 for optimal performance
- PEM nuts are the recommended solution for rear mount hardware, see detail "D". When using loose nuts to secure to panel, use the same shell ground pad as shown in detail "B".

# "ZERO-CROSSTALK" M83513 Micro-D VersaLink™ Connectors

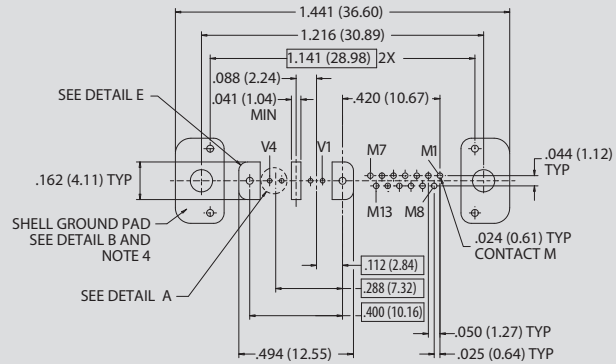


## GVLM-1004: GVLSM-BS, Board Mount Straight, Ground-Isolated Connector PCB Footprints

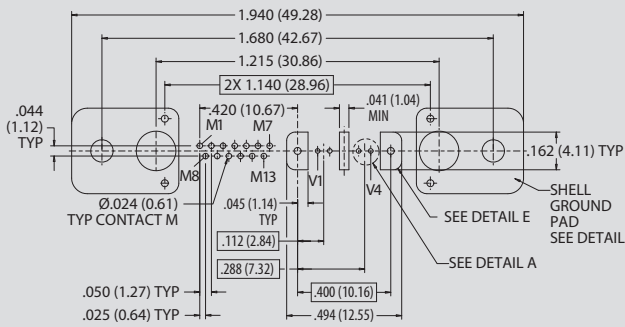
MICRO-D VERSALINK CONNECTORS



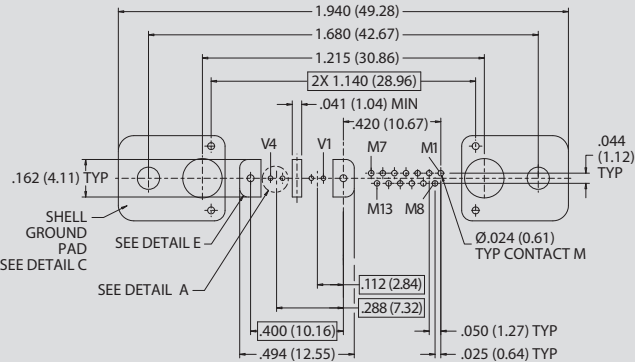
**Plug Layout 2-13  
PN and R1-R6 Hardware**



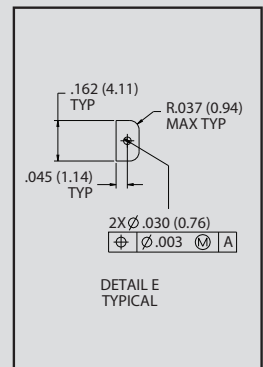
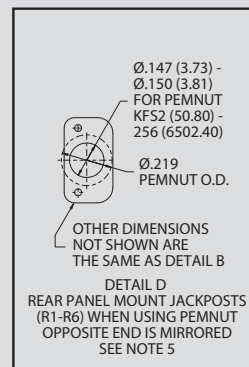
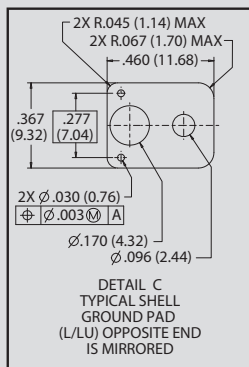
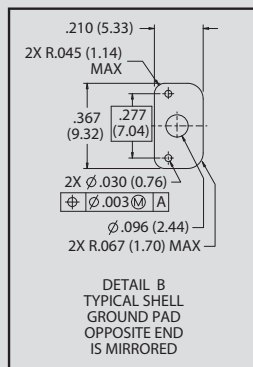
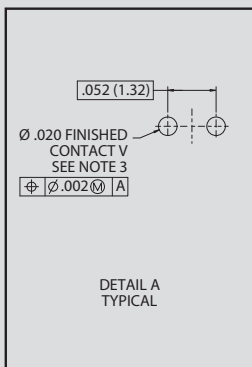
**Receptacle Layout 2-13  
PN and R1-R6 Hardware**



**Plug Layout 2-13  
L/LU Hardware**



**Receptacle Layout 2-13  
L/LU Hardware**



### NOTES

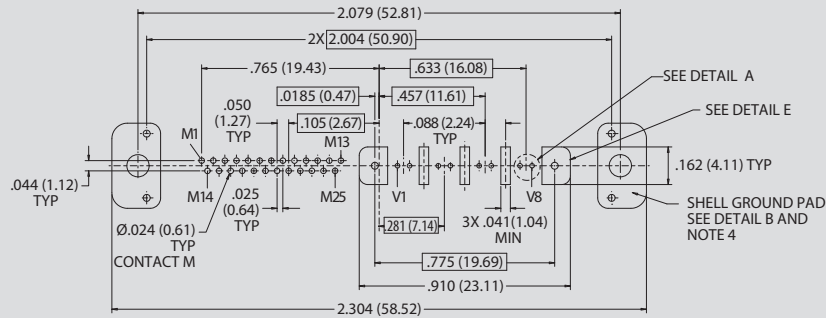
1. Patterns shown are for connector mounting side of PCB
2. Reference GVLSM-BS for connector details.
3. Reference application notes AN0005 for optimal performance
4. PEM nuts are the recommended solution for rear mount hardware, see detail "D". When using loose nuts to secure to panel, use the same shell ground pad as shown in detail "B".

# "ZERO-CROSSTALK" M83513 Micro-D VersaLink™ Connectors

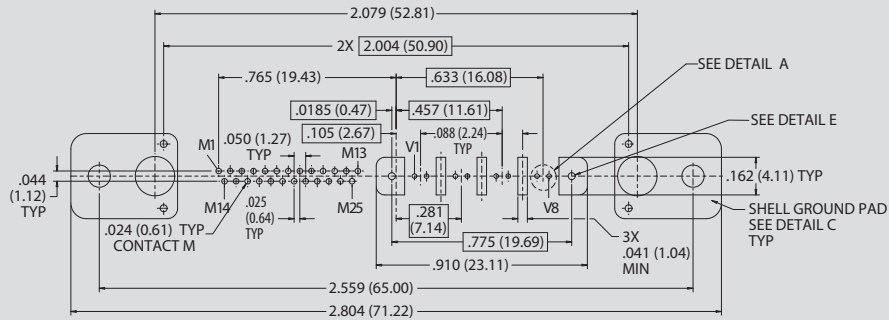


## GVLM-1004: GVLMS-BS, Board Mount Straight, Ground-Isolated Connector PCB Footprints

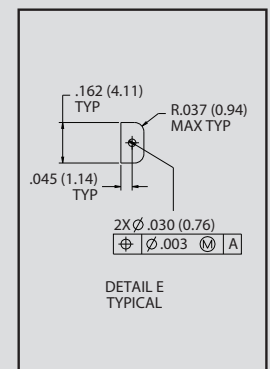
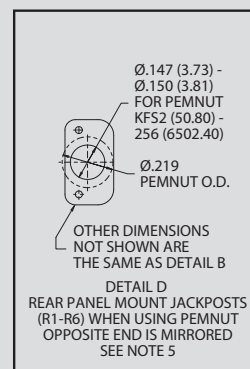
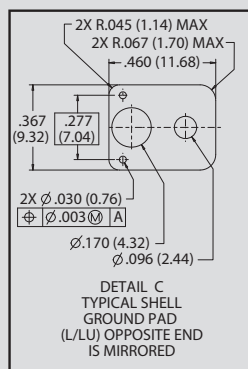
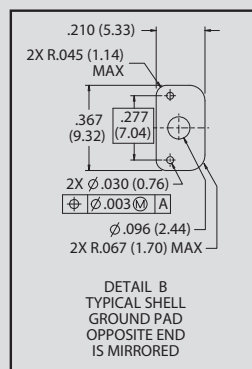
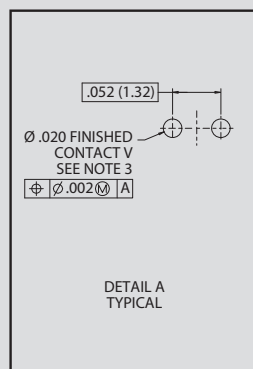
MICRO-D VERSALINK CONNECTORS



**Plug Layout 4-25  
PN and R1-R6 Hardware**



**Plug Layout 4-25  
L/LU Hardware**



### NOTES

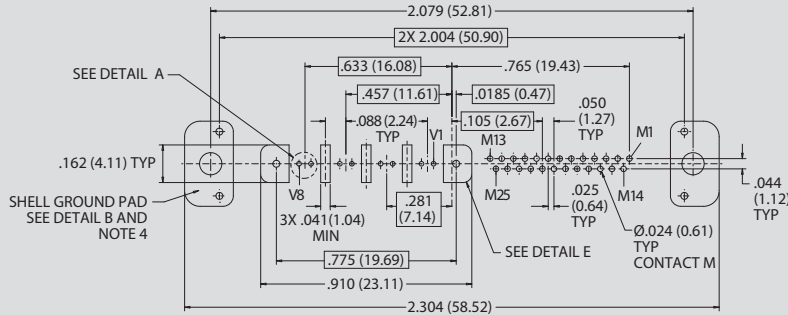
1. Patterns shown are for connector mounting side of PCB
2. Reference GVLMS-BS for connector details.
3. Reference application notes AN0005 for optimal performance
4. PEM nuts are the recommended solution for rear mount hardware, see detail "D". When using loose nuts to secure to panel, use the same shell ground pad as shown in detail "B".

# "ZERO-CROSSTALK" M83513 Micro-D VersaLink™ Connectors

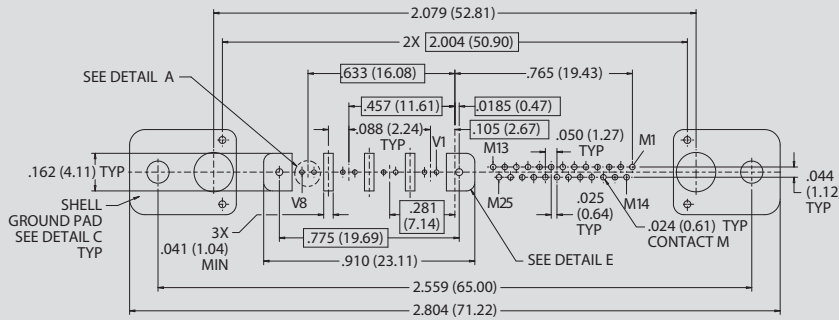


## GVLM-1004: GVLMS-BS, Board Mount Straight, Ground-Isolated Connector PCB Footprints

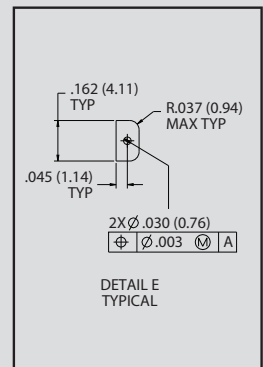
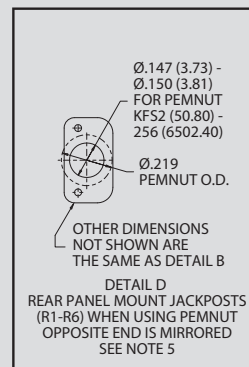
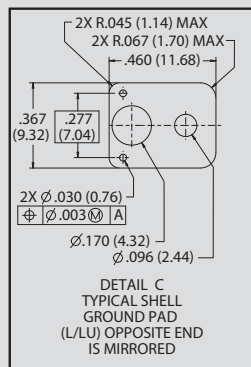
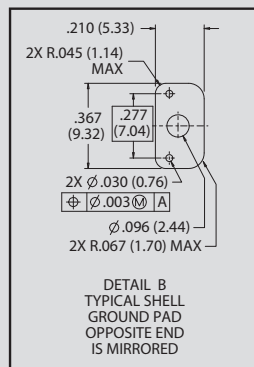
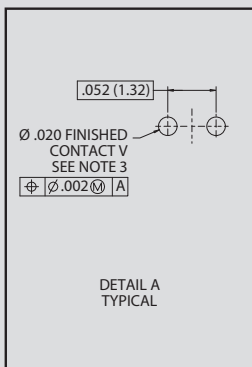
MICRO-D VERSALINK CONNECTORS



**Receptacle Layout 4-25  
PN and R1-R6 Hardware**



**Receptacle Layout 4-25  
L/LU Hardware**



### NOTES

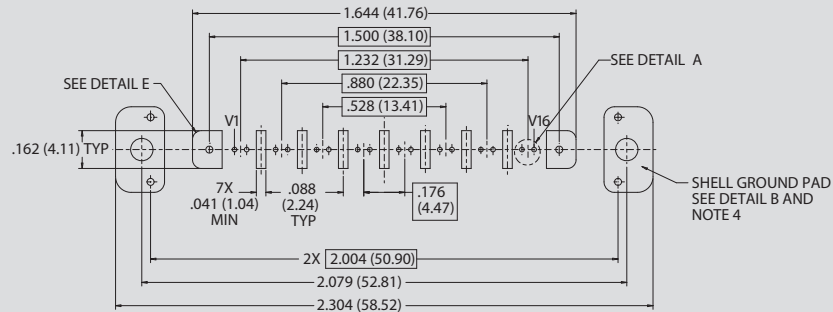
1. Patterns shown are for connector mounting side of PCB
2. Reference GVLMS-BS for connector details.
3. Reference application notes AN0005 for optimal performance
4. PEM nuts are the recommended solution for rear mount hardware, see detail "D". When using loose nuts to secure to panel, use the same shell ground pad as shown in detail "B".

# "ZERO-CROSSTALK" M83513 Micro-D VersaLink™ Connectors

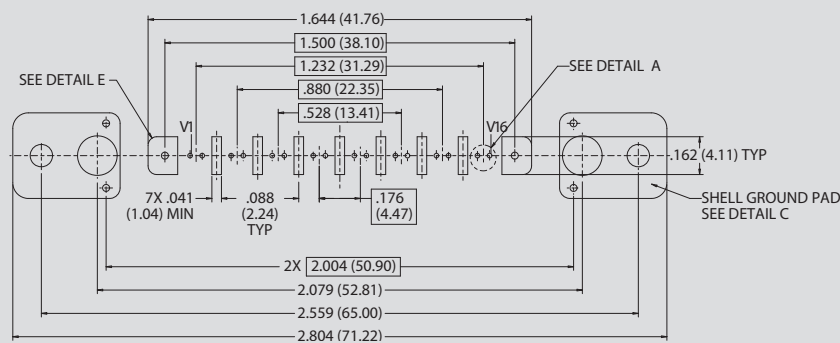


GVLM-1004: GVLMS-BS, Board Mount Straight, Ground-Isolated Connector PCB Footprints

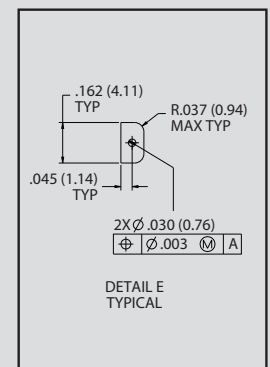
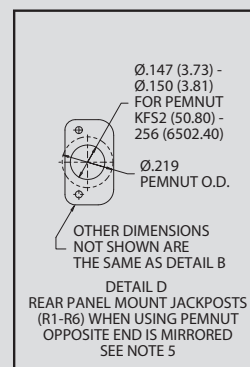
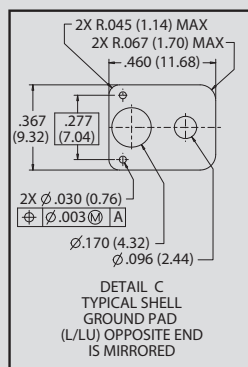
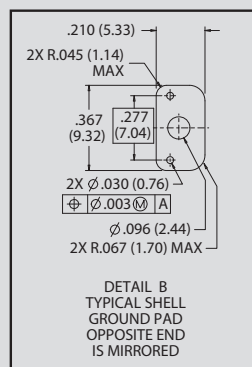
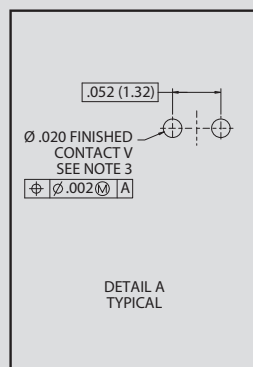
MICRO-D VERSALINK CONNECTORS



**Plug Layout 8-0  
PN and R1-R6 Hardware**



**Plug Layout 8-0  
L/LU Hardware**



## NOTES

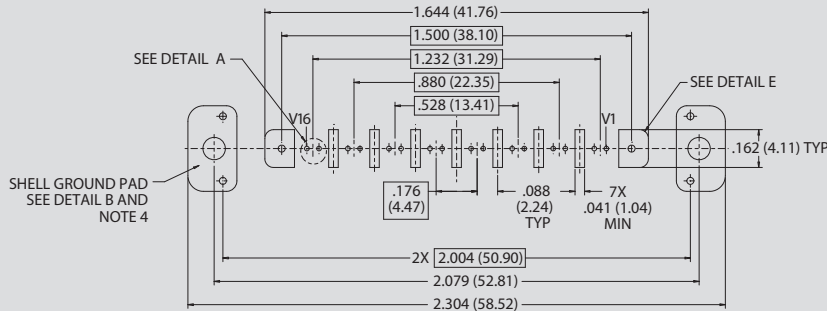
1. Patterns shown are for connector mounting side of PCB
2. Reference GVLMS-BS for connector details.
3. Reference application notes AN0005 for optimal performance
4. PEM nuts are the recommended solution for rear mount hardware, see detail "D". When using loose nuts to secure to panel, use the same shell ground pad as shown in detail "B".

# "ZERO-CROSSTALK" M83513 Micro-D VersaLink™ Connectors

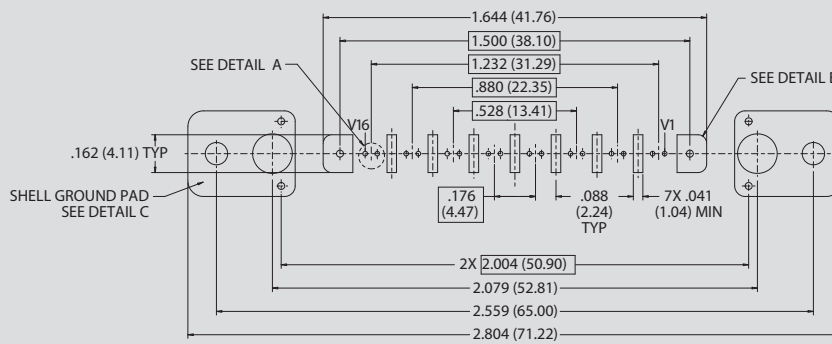


## GVLM-1004: GVLMS-BS, Board Mount Straight, Ground-Isolated Connector PCB Footprints

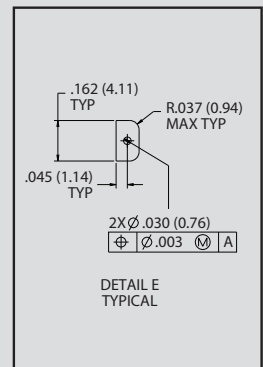
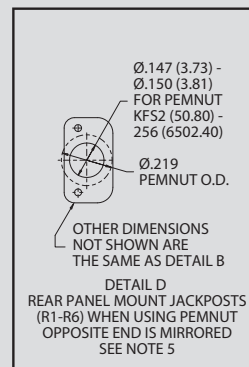
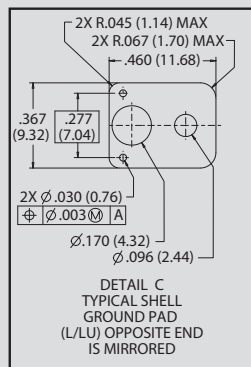
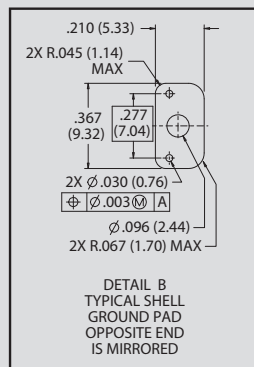
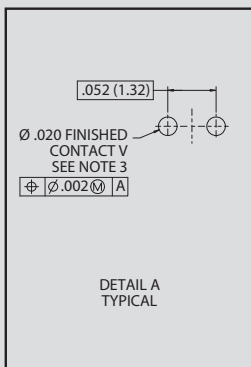
MICRO-D VERSALINK CONNECTORS



**Receptacle Layout 8-0  
PN and R1-R6 Hardware**



**Receptacle Layout 8-0  
L/LU Hardware**



### NOTES

1. Patterns shown are for connector mounting side of PCB
2. Reference GVLMS-BS for connector details.
3. Reference application notes AN0005 for optimal performance
4. PEM nuts are the recommended solution for rear mount hardware, see detail "D". When using loose nuts to secure to panel, use the same shell ground pad as shown in detail "B".