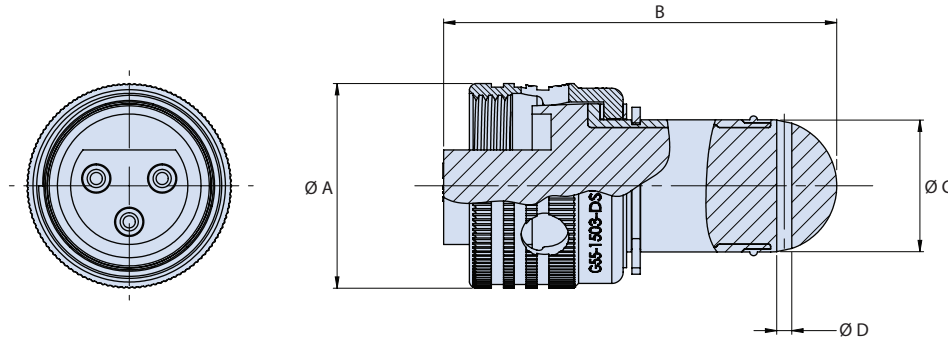




10K PSI / 700 BAR / 7000M
**SuperG55™ High-Pressure,
 Dry-Mate Subsea Connectors**
 G55 receptacle cover



SuperG55™ Receptacle Cover - How To Order					
Sample Part Number	G55	D1	15	03	-0001
Series	SuperG55™ = Underwater dry-mate				
Connector Style	D1 = Receptacle cover				
Shell Size	15, 20, 24				
Number of Contacts	See contact arrangements (page 23)				
Cable Length	In feet (0001 = 1 foot, 0002 = 2 feet, etc.)				



Dimensions				
Contact Arrangement	Dim A ±.006 (.15)	Dim B Nominal	Dim C ±.010 (.25)	Dim D ±.005 (.13)
1503	1.070 (27.18)	2.047 (52.00)	0.688 (17.48)	.079 (2.00)
1508	1.070 (27.18)	2.047 (52.00)	0.688 (17.48)	.079 (2.00)
2008	1.450 (36.85)	2.244 (57.00)	1.093 (27.76)	.118 (3.00)
2013	1.450 (36.85)	2.244 (57.00)	1.093 (27.76)	.118 (3.00)
2021	1.450 (36.85)	2.244 (57.00)	1.093 (27.76)	.118 (3.00)
2412	1.700 (43.20)	2.362 (60.00)	1.312 (33.32)	.118 (3.00)

SUBSEA/DEEPWATER: SUPERG55™

