



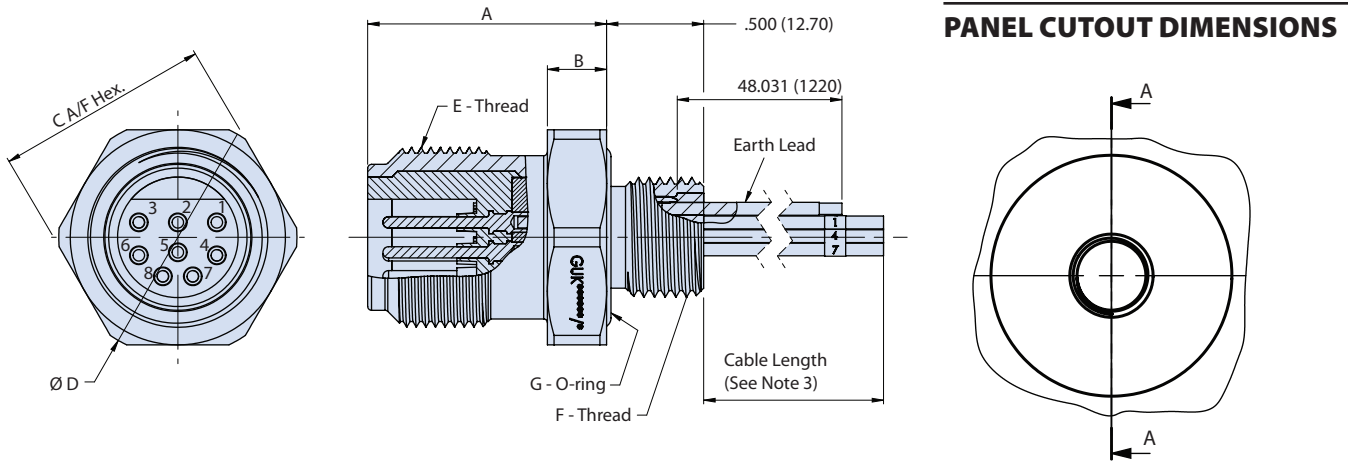
10K PSI / 700 BAR / 7000M SuperG55™ High-Pressure Subsea



G55 07 bulkhead connector receptacle with earth lead/ground pin (BCR-EL)



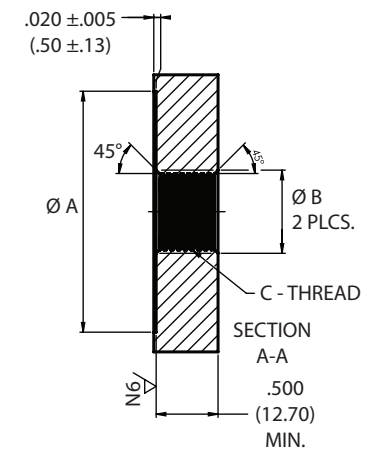
SuperG55™ BCR with Earth Lead - How To Order						
Sample Part Number	G55	07	15	08	-0001	EL
Series	SuperG55™ = Underwater dry-mate					
Connector Style	07 = Bulkhead connector receptacle					
Shell Size	15, 20, 24					
Number of Contacts	See contact arrangements (page 23)					
Cable Length	In feet (0001 = 1 foot, 0002 = 2 feet, etc.)					
Earth Lead	EL = Earth lead (ground pin)					



Dimensions							
Shell Size	Dim A 0.26 (0.010")	Dim B 0.39 (0.015")	Dim C .13 (0.005")	Dim D 0.13 (0.005")	E - Thread	F - Thread	G - O Ring
15	1.250 (31.75)	.314 (7.98)	1.120 (28.45)	1.250 (31.75)	15/16"-20 UNEF-2A	5/8"-18 UNF-2A	BS1806-116
20	1.500 (38.10)	.374 (9.50)	1.250 (31.75)	1.398 (35.51)	1 1/4"-9 STUB ACME	3/4"-16 UNF-2A	BS1806-118
24	1.500 (38.10)	.374 (9.50)	1.500 (38.10)	1.700 (43.18)	1 1/2"-9 STUB ACME	1.000"-14 UNS-2A	BS1806-122

NOTES

- 1508 Pin configuration shown. Other pin configurations available
- All contacts / pin configurations suit 16 AWG wire
- Cable length tolerance:
 - Length = ≤ 0.30M (1ft) tolerance = +25mm / -0mm (+1" / -0)
 - Length = 0.3M - 1.5M (1ft - 5ft) tolerance = +50mm / -0mm (+2" / -0)
 - Length = 1.5M - 3M (5ft - 10ft) tolerance = +100mm / -0mm (+4" / -0)
 - Length = 3M - 7.5M (10ft - 25ft) tolerance = +150mm / -0mm (+6" / -0)
 - Length = ≥ 7.5M (25ft) tolerance = +5% / -0mm



SUBSEA/DEEPWATER: SUPERG55™

