

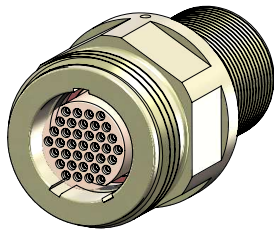


SERIES 70 10K PSI / 700 BA R / 7000 M



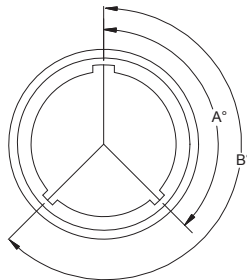
SeaKing™ High-Pressure Subsea Connectors, Cables, and PBOF Assemblies

707-0147-7 Reverse Gender Bulkhead Receptacle



SeaKing BCR - How To Order						
Sample Part Number	707-0147	-7	M37	Z1	S	N
Product Series	707-0147 = SeaKing					
Connector Style	-7 = Reverse Gender Bulkhead Receptacle					
Shell Size-Contact Arrangement	See SeaKing Contact Arrangements table					
Shell Material	Z1 = Stainless Steel TC = Titanium					
Contact Style	S = Socket					
Alternate Key Position	A, B, C, N = Normal (See Alternate Key Positions table)					

Alternate Key Positions



Position	A°	B°
N	150°	210°
A	75°	210°
B	95°	230°
C	140°	275°

NOTES

Pressure ratings:

Mated condition - 10,000 PSI

Open face - 10,000 PSI

Tested per ISO 13628-6

Electrical:

Rated voltage: 600VDC / 425VAC per EIA-364-20F, method C.

Rated current: see 709-099 for individual contact current rating.

Insulation resistance: 5 gohm at 500VDC per EIA-364-21E.

MATERIAL/FINISH

Shell - See part number development

Glass-seal insert:

Pins - Inconel x750/gold plated

Insert - Inconel x750

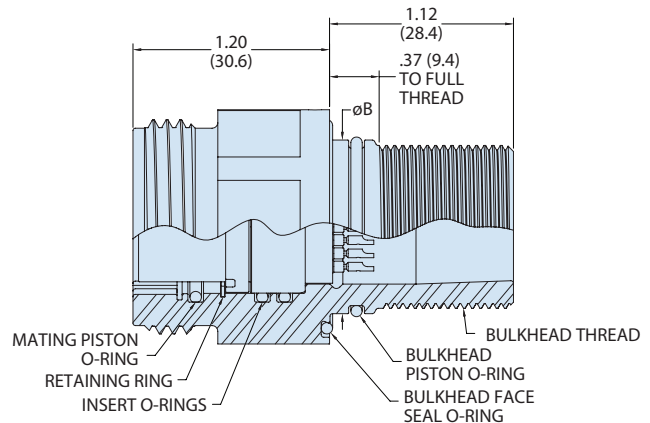
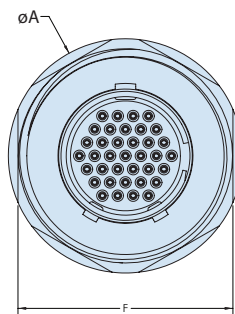
Insulator - Fused vitreous glass

Gender converter:

Sockets - Copper alloy/gold plated

Insert - 30% glass reinforced P.E.E.K.

O-rings - nitrile

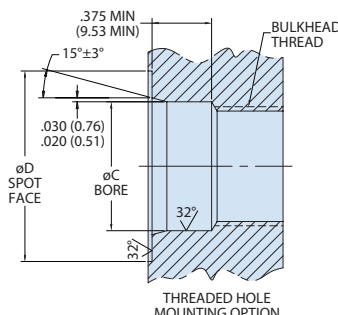
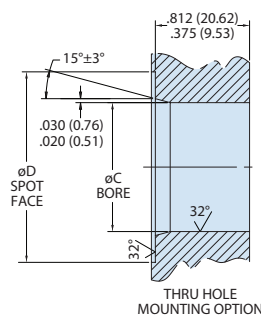


Dimensions

Size	A		B		Hex Flats F		Bulkhead Face Seal O-Ring	Bulkhead Piston O-Ring	Mating Piston & Insert O-Ring	Retaining Ring	Bulkhead Thread*	Bulkhead Mounting Torque**
	In.	mm	In.	mm	In.	mm						
G	1.06	26.92	.685	17.40	.938	23.83	2-019	2-015	2-014	VH-50-S16	5/8-24 UNEF	30
K	1.18	29.97	.810	20.57	1.063	27.00	2-020	2-017	2-016	VH-62-S16	3/4-20 UNEF	35
L	1.31	33.27	.935	23.75	1.188	30.18	2-022	2-019	2-018	VH-75-S16	7/8-20 UNEF	35
M	1.43	36.32	1.060	26.92	1.313	33.35	2-024	2-021	2-019	VH-81-S16	1-20 UNEF	35
O	1.68	42.67	1.185	30.10	1.563	39.70	2-027	2-023	2-023	VH-106-S16	1 1/8-16 UN	50
P	1.81	45.97	1.310	33.27	1.688	42.88	2-029	2-025	2-025	VH-118-S16	1 1/4-16 UN	50
Q	1.93	49.02	1.435	36.45	1.813	46.05	2-030	2-027	2-028	VH-137-S16	1 3/8-16 UN	50
R	2.06	52.32	1.623	41.22	1.938	49.23	2-031	2-029	2-029	VH-150-S16	1 1/2-16 UN	60

* Male: Class 2A Female: Class 2B

** For Dry Threads (Ft-Lbs)



Mounting Options

Shell Size	Ø C		Ø D Min	
	In.	mm	In.	mm
G	.687	17.45	1.08	27.43
K	.812	20.62	1.20	30.48
L	.937	23.80	1.33	33.78
M	1.062	26.97	1.45	36.83
O	1.187	30.15	1.70	43.18
P	1.312	33.32	1.83	46.48
Q	1.437	36.50	1.95	49.53
R	1.625	41.28	2.08	52.83

SUBSEA/DEEPWATER: SEAKING™

