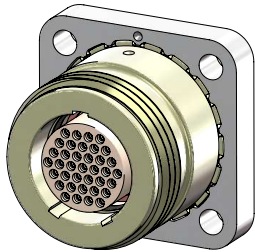




SERIES 70 10K PSI / 700 BA R / 7000 M

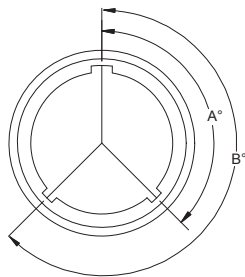
SeaKing™ High-Pressure Subsea Connectors, Cables, and PBOF Assemblies

707-0147-6 Reverse Gender Flange Receptacle

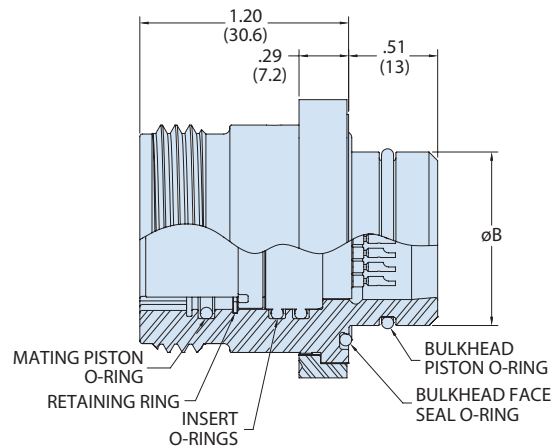
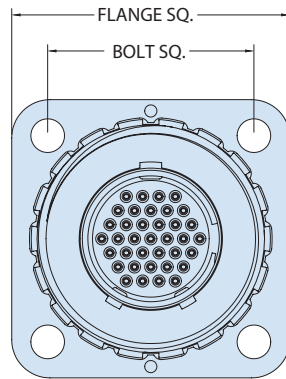


SeaKing BCR - How To Order						
Sample Part Number	707-0147	-6	M37	Z1	S	N
Product Series	707-0147 = SeaKing					
Connector Style	-6 = Reverse Gender Flange Receptacle					
Shell Size-Contact Arrangement	See SeaKing Contact Arrangements table					
Shell Material	Z1 = Stainless Steel TC = Titanium					
Contact Style	S = Socket					
Alternate Key Position	A, B, C, N = Normal (See Alternate Key Positions table)					

Alternate Key Positions



Position	A°	B°
N	150°	210°
A	75°	210°
B	95°	230°
C	140°	275°



NOTES

Pressure ratings:

- Mated condition - 10,000 PSI
- Open face - 10,000 PSI
- Tested per ISO 13628-6

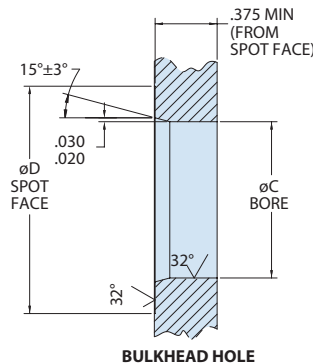
Electrical:

- Rated voltage: 600VDC / 425VAC per EIA-364-20F, method C.
- Rated current: see 709-099 for individual contact current rating.
- Insulation resistance: 5 gohm at 500VDC per EIA-364-21E.
- Insulation resistance: 5 gohm at 500vdc per EIA-364-21E.

MATERIAL/FINISH

- Barrel: See part number development
- Shell & flange - See part number development
- Glass-seal insert:
 - Pins - Inconel x750/gold plated
 - Insert - Inconel x750
 - Insulator - Fused vitreous glass
- Gender converter:
 - Sockets - Copper alloy/gold plated
 - Insert - 30% glass reinforced P.E.E.K.
- O-rings - nitrile

Shell Size	Flange Sq.		Bolt Sq.		Bulkhead Face Seal O-Ring	Bulkhead Piston O-Ring	Mating Piston & Insert O-Ring	Retaining Ring	ø B +.000 -.001		Flange Screws
	In.	mm	In.	mm					In.	mm	
G	1.20	30.48	.906	23.01	2-018	2-015	2-014	VH-50-S16	.685	17.40	#4-40
K	1.35	34.29	1.020	25.91	2-019	2-016	2-016	VH-62-S16	.748	19.00	#6-32
L	1.47	37.34	1.124	28.55	2-021	2-018	2-018	VH-75-S16	.873	22.17	#6-32
M	1.60	40.64	1.186	30.12	2-023	2-020	2-019	VH-81-S16	.998	25.35	#8-32
O	1.87	47.50	1.446	36.73	2-026	2-022	2-023	VH-106-S16	1.123	28.52	#8-32
P	2.00	50.80	1.554	39.47	2-028	2-024	2-025	VH-118-S16	1.248	31.70	#8-32
Q	2.18	55.37	1.662	42.21	2-029	2-026	2-028	VH-137-S16	1.373	34.87	#10-24
R	2.30	58.42	1.768	44.91	2-030	2-028	2-029	VH-150-S16	1.498	38.05	#10-24



Shell Size	ø C +.002 -.000		ø D Min Spotface ≤ .005 ∇		ø D Min Spotface > .005 ∇	
	In.	mm	In.	mm	In.	mm
G	.687	17.45	1.080	27.43	1.600	40.64
K	.750	19.05	1.205	30.61	1.795	45.59
L	.875	22.23	1.330	33.78	1.960	49.78
M	1.000	25.40	1.455	36.96	2.115	53.72
O	1.125	28.58	1.705	43.31	2.495	63.37
P	1.250	31.75	1.830	46.48	2.665	67.69
Q	1.375	34.93	1.955	49.66	2.895	73.53
R	1.500	38.10	2.080	52.83	3.055	77.60