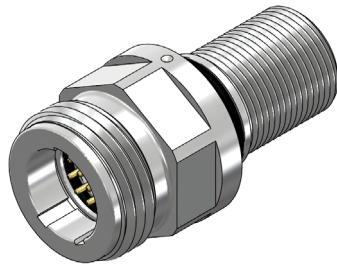




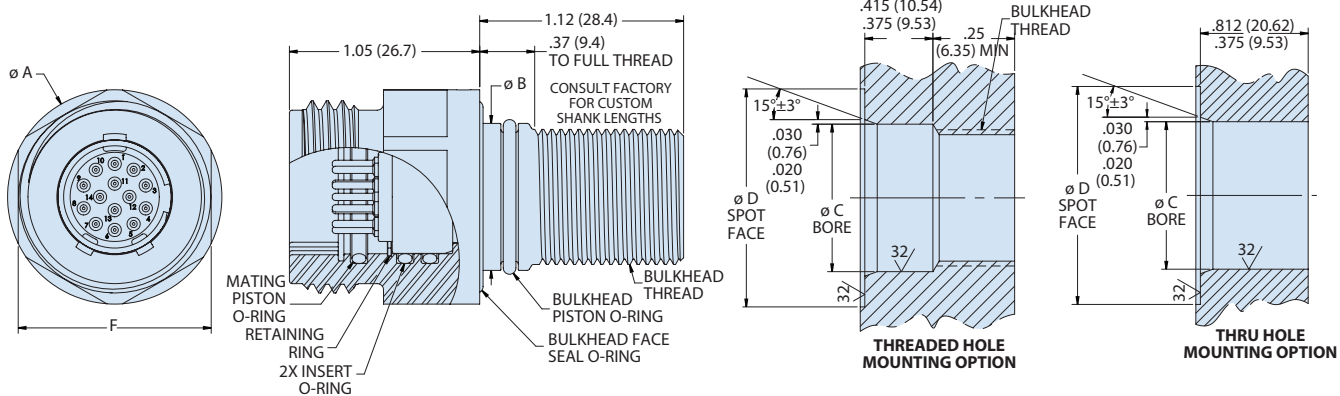
SERIES 70 10K PSI / 700 BA R / 7000 M

SeaKing™ High-Pressure Subsea Connectors, Cables, and PBOF Assemblies

700-027 Bulkhead Connector Receptacle (BCR)



SeaKing BCR - How To Order	
Sample Part Number	700-027 -K14 -Z1 P N -1147
Product Series	700 = SeaKing Cable Connector Receptacle
Shell Size-Contact Arrangement	See SeaKing Contact Arrangements table
Shell Material	Z1 = Stainless Steel TC = Titanium
Contact Style	P = Pin S = Socket (reverse gender)
Alternate Key Position	A, B, C, N = Normal (See Alternate Key Positions table)
Color Band	1147 = Color Band Per Polarization Table Blank = No Color Band



SUBSEA/DEEPWATER: SEAKING™

Dimensions											
Size	Ø A	Ø B +.000 -.001	Hex Flats F	Bulkhead Face Seal O-Ring	Bulkhead Piston O-Ring	Mating Piston & Insert O-Ring	Retaining Ring	Ø C +.002 -.000	Ø D (Min)	Bulkhead Thread Male: Class 2a Female: Class 2b	Bulkhead Mounting Torque For Dry Threads (Ft-Lbs)
E	.930 (23.62)	.560 (14.22)	.813 (20.65)	2-016	2-013	2-012	709-055-37	.562 (14.27)	.95 (24.13)	1/2-20 UNF	16
G	1.06 (26.92)	.685 (17.40)	.938 (23.83)	2-019	2-015	2-014	709-055-50	.687 (17.45)	1.08 (27.43)	5/8-24 UNEF	20
K	1.18 (29.97)	.810 (20.57)	1.063 (27.00)	2-020	2-017	2-016	709-055-62	.812 (20.62)	1.20 (30.48)	3/4-20 UNEF	24
L	1.31 (33.27)	.935 (23.75)	1.188 (30.18)	2-022	2-019	2-018	709-055-75	.937 (23.80)	1.33 (33.78)	7/8-20 UNEF	24
M	1.43 (36.32)	1.060 (26.92)	1.313 (33.35)	2-024	2-021	2-019	709-055-81	1.062 (26.97)	1.45 (36.83)	1-20 UNEF	24
O	1.68 (42.67)	1.185 (30.10)	1.563 (39.70)	2-027	2-023	2-023	709-055-106	1.187 (30.15)	1.70 (43.18)	1 1/8-16 UN	30
P	1.81 (45.97)	1.310 (33.27)	1.688 (42.88)	2-029	2-025	2-025	709-055-118	1.312 (33.32)	1.83 (46.48)	1 1/4-16 UN	30
Q	1.93 (49.02)	1.435 (36.45)	1.813 (46.05)	2-030	2-027	2-028	709-055-137	1.437 (36.50)	1.95 (49.53)	1 3/8-16 UN	30
R	2.06 (52.32)	1.623 (41.22)	1.938 (49.23)	2-031	2-029	2-029	709-055-150	1.625 (41.28)	2.08 (52.83)	1 1/2-16 UN	30

Alternate Key Positions		
Position	A°	B°
N	150°	210°
A	75°	210°
B	95°	230°
C	140°	275°

NOTES

Pressure ratings:

Mated condition - 10,000 psi
Open face condition - 5,000 psi (up to size "q"). For 10,000 psi open face rated ccr, See drawing 700-007.
Tested per iso 13628-6

Electrical:

Rated voltage: 600vdc / 425vac per EIA-364-20F, Method C.
Rated current: see 709-099 for individual contact current ratings.

Insulation resistance: 5 gohm at 500vdc per EIA-364-21E.

MATERIAL/FINISH

Shell & flange - See part number development
Contacts - Copper alloy, gold plated
Insert - Glass reinforced epoxy
O-rings - Nitrile rubber, 90 Shore A durometer. O-ring kits are available for each connector size. Refer to drawing 709-026 for details.