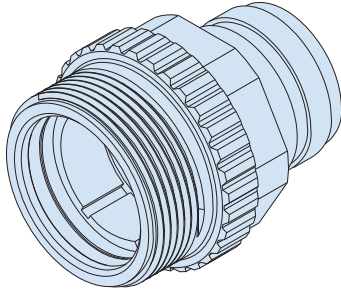




SERIES 701 SeaKing™ Junior Dry-Mate Subsea Connectors



701-015 Cable Connector Receptacle (CCR)



HOW TO ORDER					
Sample Part Number	701-015	-15-35	-Z1	P	N
Product Series	701-015 = SeaKing Junior				
Shell Size-Contact Arrangement	See Contact Arrangements table				
Barrel Material	Z1 = 316 Stainless Steel* (Marine Bronze Coupling Nut) TC = Titanium XO = PEEK**				
Contact Style	A = Pin Insert (No Contacts Included) B = Socket Insert (No Contacts Included) P = Pin S = Socket				
Key Position	N = Normal A, B, C, D, E (See table)				

* 316 Stainless steel for sizes 09 through 19 2507 Super duplex for sizes 17 through 25
** Consult factory for pressure rating

NOTES

Pressure rating: Mated condition - 5,000 PSI

Materials tested to:

- Salt spray, per MIL-STD-202 method 101
- Humidity, per MIL-STD-202 method 101
- Thermal cycle, per EIA-455-71

Single O-ring sealing.

MATERIAL/FINISH

Receptacle shell: See part number development

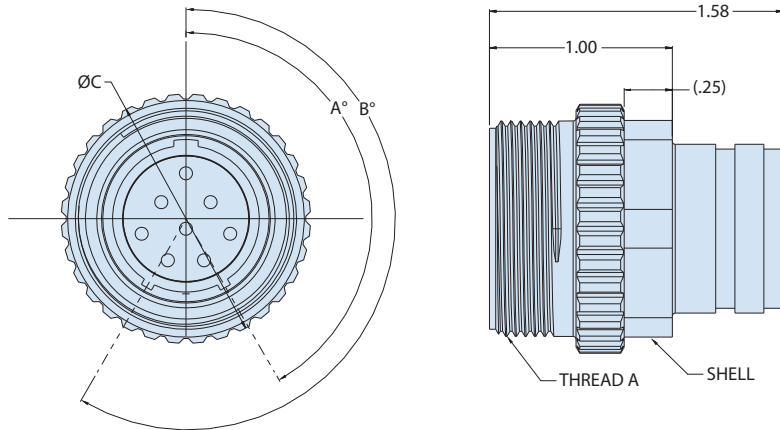
Contacts: Copper alloy, gold plated

Insulator: High grade rigid dielectric

Interfacial seal (pin inserts only):

Fluorosilicone

Seals: Nitrile



ALTERNATE KEY POSITIONS		
Position	A°	B°
N	150°	210°
A	75°	210°
B	95°	230°
C	140°	275°
D	75°	275°
E	95°	210°

DIMENSIONS						
Shell Size	Thread A	C Max		Hex		Bore Seal
		inch	mm	inch	mm	
09	0.7500-20 UNEF-2A	0.935	23.7	3/4	19.1	2-014
11	0.8750-20 UNEF-2A	1.060	26.9	7/8	22.2	2-016
13	1.0000-20 UNEF-2A	1.185	30.1	1	25.4	2-018
15	1.1250-20 UN-2A	1.310	33.3	1 1/8	28.6	2-020
17	1.2500-20 UN-2A	1.435	36.4	1 1/4	31.8	2-022
19	1.3750-20 UN-2A	1.560	39.6	1 3/8	34.9	2-024
21	1.5000-20 UN-2A	1.685	42.8	1 1/2	38.1	2-026
23	1.6250-20 UN-2A	1.810	46.0	1 5/8	41.3	2-028
25	1.7500-20 UN-2A	1.935	49.1	1 3/4	44.5	2-029