

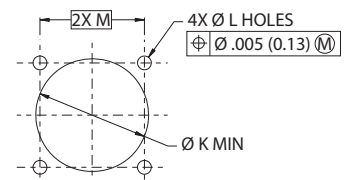


233-381 Receptacle Connector with USB 3.2 Gen 2 (Type C) Female to Female Feed-Through Connector

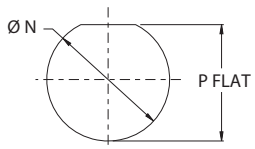


All external dimensions, features, etc. compliant with D38999/20, /24, &/26. Consult factory for additional information.

Material and Finish		
Sym.	Material	Finish Description
NF	aluminum	cadmium, olive drab
ME		electroless nickel (96 hour salt spray)
ZR		zinc nickel, black (tri-valent chromium) RoHS compliant
XM	composite	electroless nickel
Z1	SST	passivate
AB	marine bronze	none (clean only)
Consult factory for other options		



RECOMMENDED MOUNTING HOLES
PANEL THICKNESS .200 MAX
(SEE TABLE IV)



RECOMMENDED PANEL CUT OUT
PANEL THICKNESS .126-.062
(SEE TABLE IV)

233-381 Glenair SuperSeal™ USB 3.2 Female to Female Coupler

SuperSeal USB 3.2 connectors are IP67 open face rated and offer complete protection from environmental debris and water ingress common under harsh environmental conditions. Design meets USB 3.2 Gen 2 (Type C) benchmark data transfer rate requirements for read and write performance requirements.

Part Number Development					
Sample Part Number	233-381	NF	00	-11	N
Basic Number	233-381				
Material / Finish	See Material and Finish table				
Connector Style	00 = Receptacle, Wall Mount, with Slotted Holes D0 = Receptacle, Wall Mount, Round Holes CM = Receptacle, Wall Mount with Metric Clinch Nuts CS = Receptacle, Wall Mount, with Standard Clinch Nuts 07 = Receptacle, Jam-Nut 05 = Receptacle, Inline				
Shell Size	11, 13				
Alternate Polarization	A, B, C, D, E, N = Normal				

Wall Mount Dimensions					
SHELL SIZE	A THREAD	B SQ	B' SQ	C BSC	D BSC
11	.7500-.1P-.3L-TS-2A	1.043 (26.49) 1.019 (25.88)	1.132 (28.75) 1.092 (27.74)	0.812 (20.62)	0.719 (18.26)
13	.8750-.1P-.3L-TS-2A	1.138 (28.91) 1.114 (28.30)	1.226 (31.14) 1.186 (30.12)	0.906 (23.01)	0.812 (20.62)

Jam Nut Mount & Inline Dimensions					
SHELL SIZE	E THREAD	ØF	G	H FLAT	J THREAD
11	.7500-.1P-.3L-TS-2A	1.386 (35.20) 1.362 (34.59)	1.268 (32.21) 1.236 (31.39)	0.755 (19.18) 0.745 (18.92)	M20 X 1.0-6g 0.100R
13	.8750-.1P-.3L-TS-2A	1.512 (38.40) 1.488 (37.80)	1.390 (35.31) 1.358 (34.49)	0.942 (23.93) 0.932 (23.67)	M25 X 1.0-6g 0.100R

Panel Cutout & Wall Mount Dimensions					
SHELL SIZE	ØK MIN	L HOLES	M BSC	ØN	P FLAT
11	0.796 (20.22)	0.133 (3.38) 0.123 (3.12)	0.812 (20.62)	0.835 (21.21) 0.825 (20.96)	0.771 (19.58) 0.761 (19.33)
13	0.922 (23.42)		0.906 (23.01)	1.020 (25.91) 1.010 (25.65)	0.955 (24.26) 0.945 (24.00)

USB 3.2 GEN 2 (TYPE C) SPECIFICATIONS:

- Electrical: D.W.V.: 100 VAC
- I.R.: 100 MegOhms MIN.
- Operating temperature range: -40°C to +85°C

MATERIAL/FINISHES:

- Shell, jam nut - see table i
- (Composite coupling nut no plating required).
- Seals: silicone based elastomer

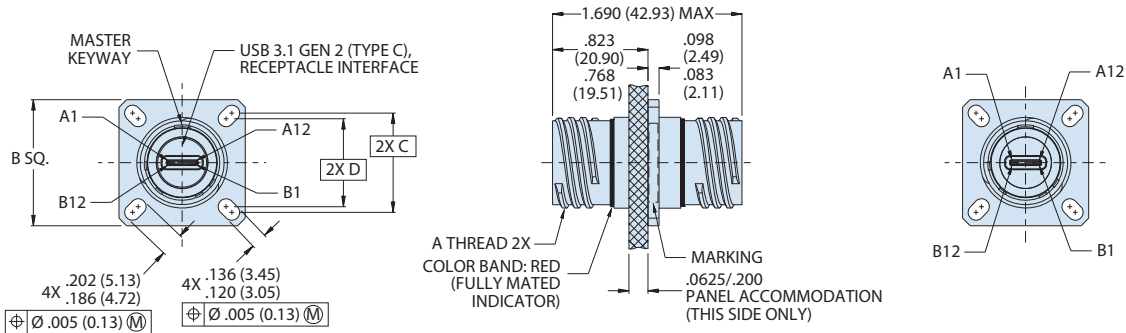
USB TYPE C:

- Housing: thermoplastic/N.A.
- Shell: copper alloy/nickel plated
- Terminal: copper alloy/ gold plated

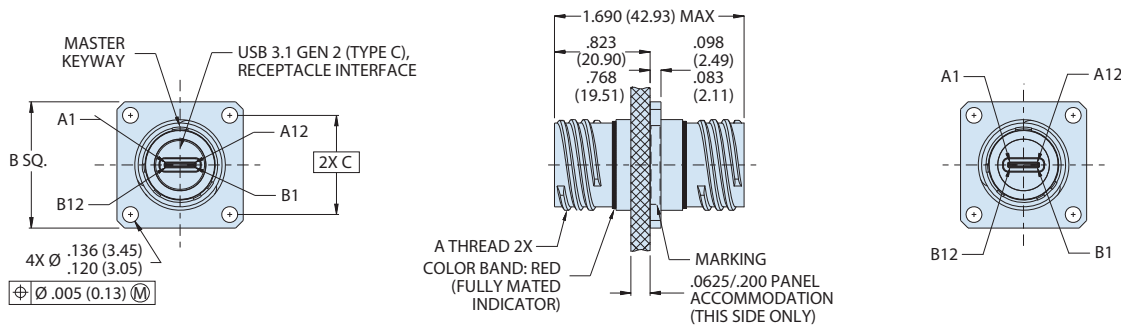


233-381 Receptacle Connector with USB 3.2 Gen 2 (Type C) Female to Female Feed-Through Connector

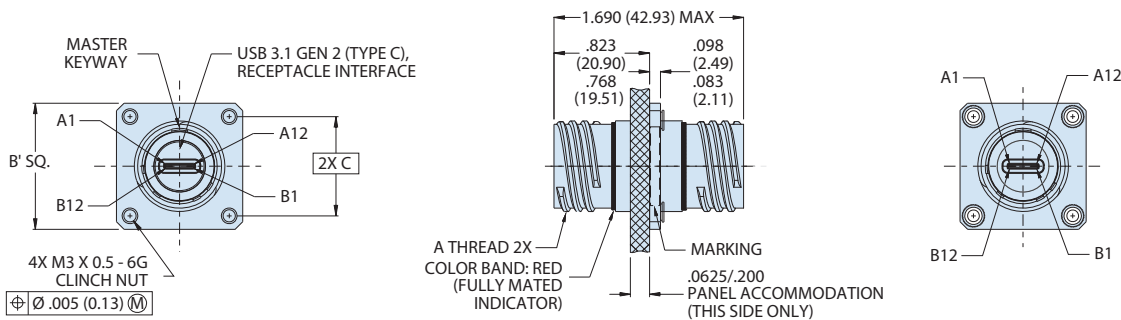
00 - WALL MOUNT RECEPTACLE WITH SLOTTED HOLES



D0 - WALL MOUNT RECEPTACLE WITH ROUND HOLES



CM - WALL MOUNT RECEPTACLE WITH METRIC CLINCH NUTS



07 - JAM NUT MOUNT RECEPTACLE

