

MIL-DTL-38999 Series III Type

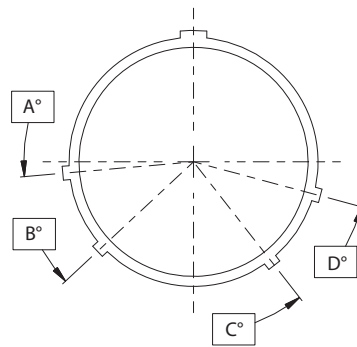
2333-2001 1000 PSI rated, piston sealed receptacle

Part Number Development									
Sample Part Number	2333-2001				-H2	Z1	9-35	S	T
Series / Basic Part No.	Series 23 SuperNine Hermetic								
Shell Style	H2 = Box Mount H5 = Solder Mount H7 = Jam Nut H8 = Weld Mount								
Finish*	Z1 = SST, Passivate ZL = SST, Nickel Plate								
Shell Size/ Contact Arrangement*	Per MIL-DTL-38999/MIL-STD-1560								
Contact Style	C = Pin, PC Tail X = Pin, Eyelet P = Pin, Solder Cup D = Skt, PC Tail Z = SKT, Eyelet S = Skt, Solder Cup								
Minor Keyway Position	Specify T for normal Alternate per Table III								

*Refer to Section A for standard insert arrangements and pages D-8 thru D-10 for special shielded contact arrangements, consult factory for additional options
Modification codes may be added directly to the end of any valid part number

Material / Finish:

- Shell & Jam-Nut - 300 Series CRES
- Contacts, Pin - Nickel-Iron Alloy / Gold Plate
- Contacts, Socket - Copper Alloy / Gold Plate
- Insulator, Pins - Vitreous Glass
- Insulator, Socket - High Grade Rigid Dielectric
- O-Rings & Seals - Pure Fluorosilicone



FACE VIEW - RECEPTACLE

CONTACT SIZE	PC TAIL Ø L
NO 23	.020 (0.51) .018 (0.46)
NO 22	.020 (0.51) .018 (0.46)
NO 20	.030 (0.76) .028 (0.71)
NO 16	.040 (1.02) .038 (0.97)
NO 12	.072 (1.83) .070 (1.78)

NOTES

- D.W.V. - Per Table V
- I.R. - 5 Gigohms min. @ 500 VDC
- Hermeticity - $<1 \times 10^{-7}$ sccHe / sec @ 1 ATM delta p
- Glenair 2333-2001 series is designed to mate with 233-274 series plug having same shell size, arrangement, keying, and opposite contact gender.
- Flange gaskets are not included for the box mount. If required, select appropriate size and material from Glenair drawing 239-204.

KEYWAY CODE	A°	B°	C°	D°
T	95	135	220	275
V	92	127	253	325
W	70	113	235	322
X	35	135	210	285
Y	54	150	239	314
Z	81	126	202	250

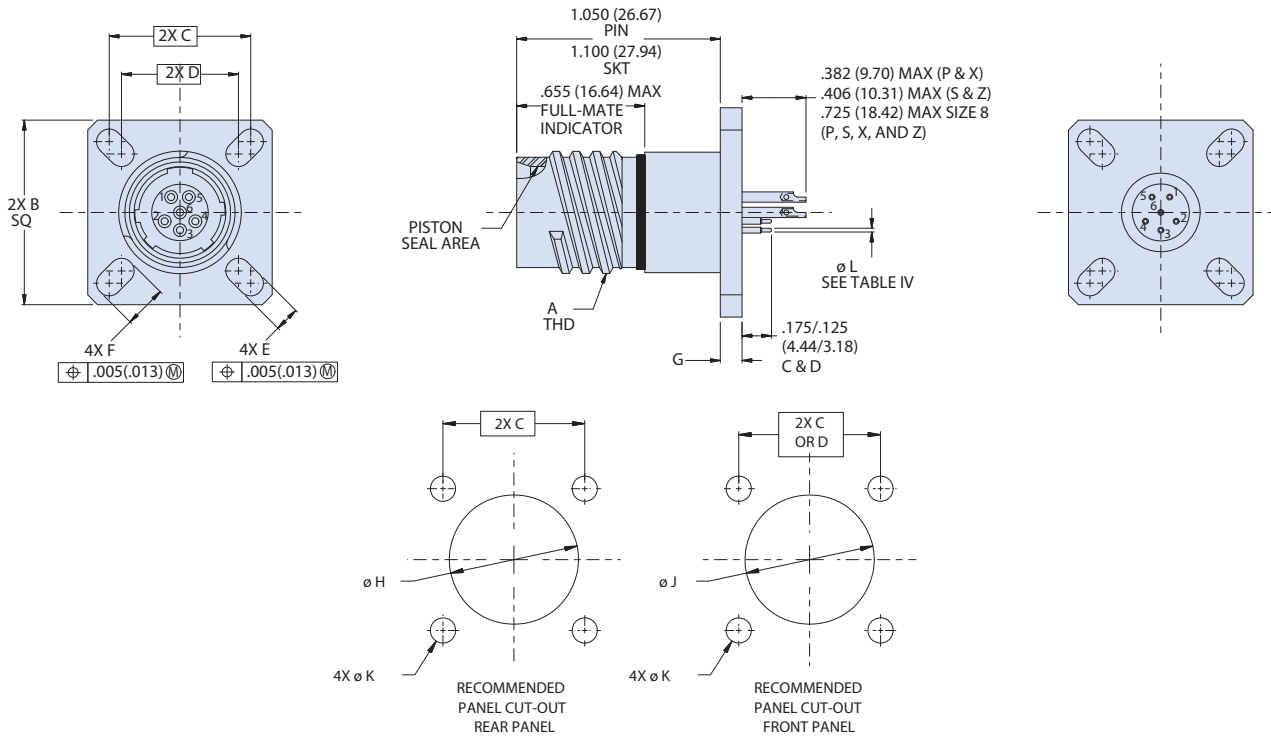
SERVICE RATING	VOLTAGE AC RMS 60 Hz
M	1300 VAC
I	1800 VAC
II	2300 VAC
N	1000 VAC

MIL-DTL-38999 Series III Type

2333-2001 1000 PSI rated, piston sealed receptacle

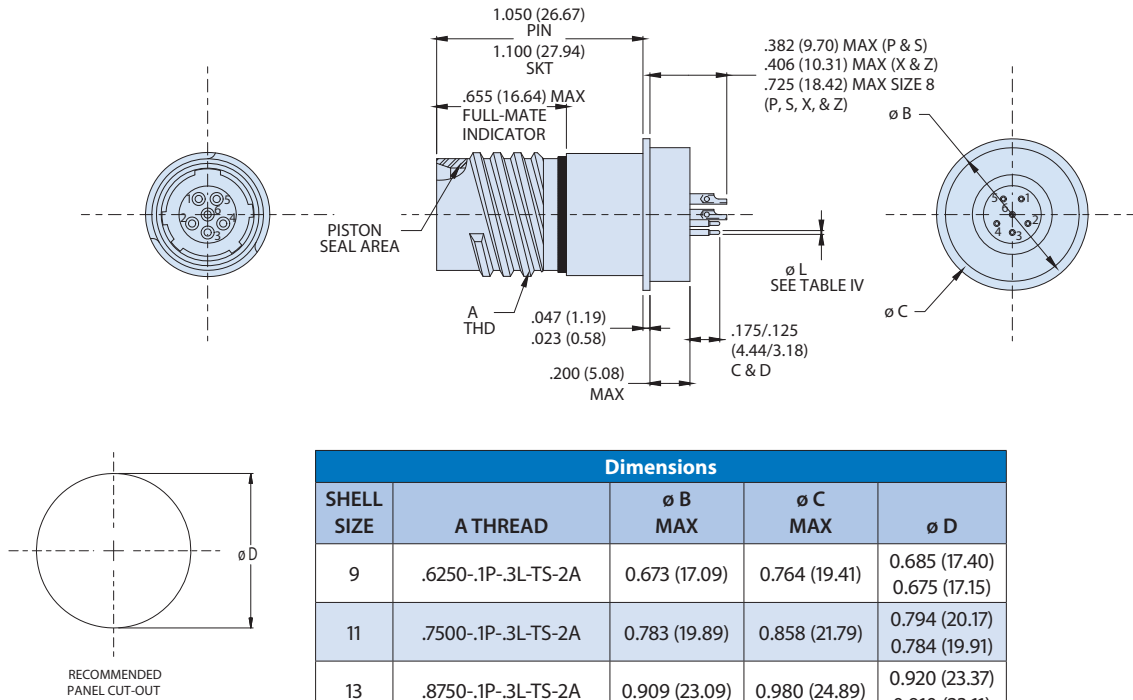
HERMETIC CONNECTORS

2333-2001-H2 PISTON SEALED BOX MOUNT RECEPTACLE



Dimensions										
SHELL SIZE	A THREAD -0.1P-0.3L-TS	B SQ FLANGE	C BASIC	D BASIC	E	F ±.008	G FLANGE	Ø H MIN	Ø J MIN	Ø K ±.005
9	0.625 (15.88)	0.949 (24.10) 0.925 (23.50)	0.719 (18.26)	0.594 (15.09)	.136 (3.45) .120 (3.05)	0.216 (5.49)	.132 (3.35) .083 (2.11)	0.656 (16.66)	0.516 (13.11)	.128 (3.25)
11	0.750 (19.05)	1.043 (26.49) 1.020 (25.91)	0.812 (20.62)	0.719 (18.26)		0.194 (4.93)		0.781 (19.84)	0.625 (15.88)	
13	0.875 (22.23)	1.138 (28.91) 1.114 (28.30)	0.906 (23.01)	0.812 (20.62)		0.194 (4.93)		0.921 (23.39)	0.750 (19.05)	
15	1.000 (25.40)	1.232 (31.29) 1.209 (30.71)	0.969 (24.61)	0.906 (23.01)		0.173 (4.39)	1.047 (26.59)	0.906 (23.01)		
17	1.187 (30.15)	1.323 (33.60) 1.299 (32.99)	1.062 (26.97)	0.969 (24.61)		0.194 (4.93)	1.218 (30.94)	1.016 (25.81)		
19	1.250 (31.75)	1.449 (36.80) 1.425 (36.20)	1.156 (29.36)	1.062 (26.97)		0.194 (4.93)	1.296 (32.92)	1.142 (29.01)		
21	1.375 (34.92)	1.575 (40.00) 1.551 (39.40)	1.250 (31.75)	1.156 (29.36)	0.194 (4.93)	.153 (3.89) .114 (2.90)	1.421 (36.09)	1.266 (32.16)		
23	1.500 (38.10)	1.701 (43.21) 1.677 (42.60)	1.375 (34.92)	1.250 (31.75)	.162 (4.11) .146 (3.71)	0.242 (6.15)	1.546 (39.27)	1.375 (34.92)	.154 (3.91)	
25	1.625 (41.28)	1.823 (46.30) 1.799 (45.69)	1.500 (38.10)	1.375 (34.92)	0.242 (6.15)	1.672 (42.47)	1.484 (37.69)			

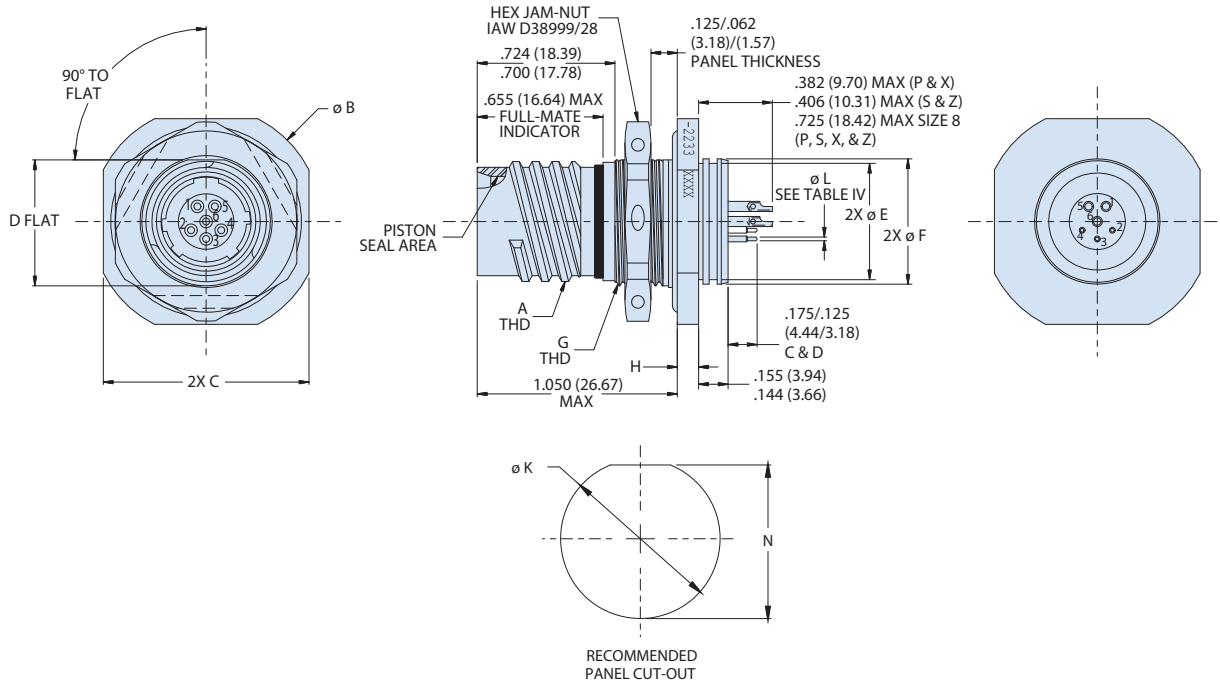
2333-2001-H5 PISTON SEALED SOLDER MOUNT RECEPTACLE



Dimensions				
SHELL SIZE	A THREAD	ø B MAX	ø C MAX	ø D
9	.6250-1P-.3L-TS-2A	0.673 (17.09)	0.764 (19.41)	0.685 (17.40) 0.675 (17.15)
11	.7500-1P-.3L-TS-2A	0.783 (19.89)	0.858 (21.79)	0.794 (20.17) 0.784 (19.91)
13	.8750-1P-.3L-TS-2A	0.909 (23.09)	0.980 (24.89)	0.920 (23.37) 0.910 (23.11)
15	1.0000-1P-.3L-TS-2A	1.031 (26.19)	1.106 (28.09)	1.043 (26.49) 1.033 (26.24)
17	1.1875-1P-.3L-TS-2A	1.157 (29.39)	1.232 (31.29)	1.169 (29.69) 1.159 (29.44)
19	1.2500-1P-.3L-TS-2A	1.252 (31.80)	1.323 (33.60)	1.263 (32.08) 1.253 (31.83)
21	1.3750-1P-.3L-TS-2A	1.378 (35.00)	1.449 (36.80)	1.389 (35.28) 1.379 (35.03)
23	1.5000-1P-.3L-TS-2A	1.504 (38.20)	1.575 (40.00)	1.515 (38.48) 1.505 (38.23)
25	1.6250-1P-.3L-TS-2A	1.626 (41.30)	1.701 (43.21)	1.638 (41.61) 1.628 (41.35)

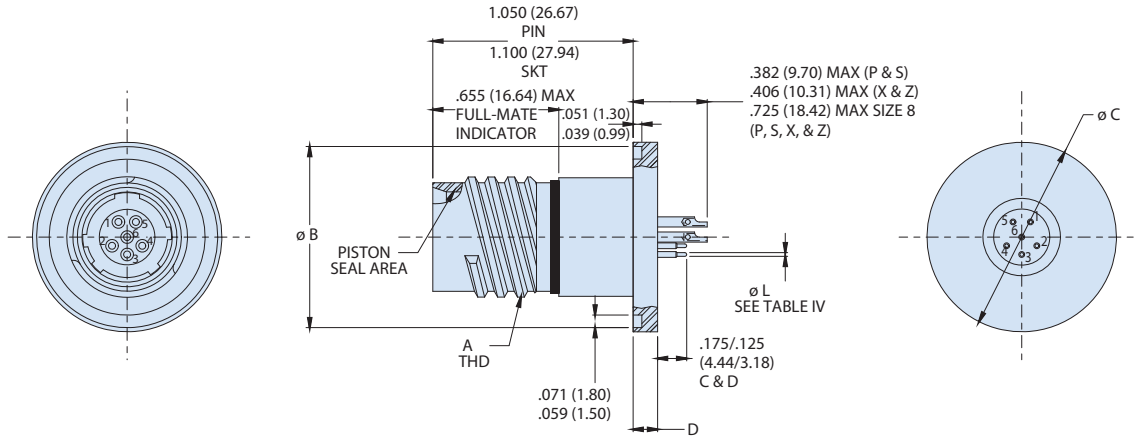
HERMETIC CONNECTORS

2333-2001-H7 PISTON SEALED JAM-NUT MOUNT RECEPTACLE

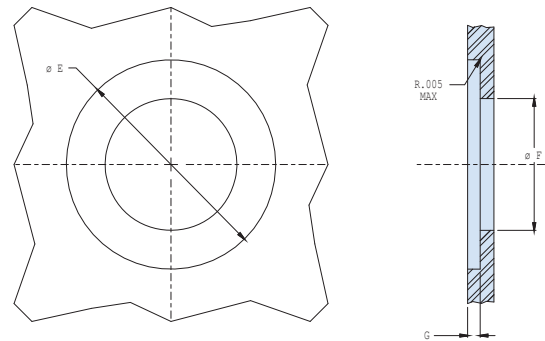


Dimensions										
SHELL SIZE	A THREAD -0.1P-0.3L-TS	ø B	C A/F ±.015	D FLAT ±.005	ø E ±.012	ø F	G THREAD ISO METRIC	H ±.008	ø K ±.005	N ±.005 (* ±.003)
9	0.625 (15.88)	1.201 (30.51) 1.177 (29.90)	1.063 (27.00)	0.650 (16.51)	0.602 (15.29)	0.653 (16.59) 0.642 (16.31)	M17 X 1.0-6g	0.106 (2.69)	0.698 (17.73)	.658*
11	0.750 (19.05)	1.386 (35.20) 1.362 (34.59)	1.252 (31.80)	0.750 (19.05)	0.724 (18.39)	0.775 (19.68) 0.764 (19.41)	M20 X 1.0-6g		0.830 (21.08)	0.766 (19.46)
13	0.875 (22.23)	1.512 (38.40) 1.488 (37.80)	1.374 (34.90)	0.937 (23.80)	0.850 (21.59)	0.905 (22.99) 0.894 (22.71)	M25 X 1.0-6g		1.015 (25.78)	0.950 (24.13)
15	1.000 (25.40)	1.638 (41.61) 1.614 (41.00)	1.500 (38.10)	1.061 (26.95)	0.976 (24.79)	1.031 (26.19) 1.020 (25.91)	M28 X 1.0-6g		1.140 (28.96)	1.080 (27.43)
17	1.187 (30.15)	1.764 (44.81) 1.740 (44.20)	1.626 (41.30)	1.186 (30.12)	1.102 (27.99)	1.153 (29.29) 1.142 (29.01)	M32 X 1.0-6g		1.265 (32.13)	1.205 (30.61)
19	1.250 (31.75)	1.949 (49.50) 1.925 (48.90)	1.811 (46.00)	1.311 (33.30)	1.228 (31.19)	1.279 (32.49) 1.268 (32.21)	M35 X 1.0-6g	0.138 (3.51)	1.390 (35.31)	1.330 (33.78)
21	1.375 (34.92)	2.075 (52.71) 2.051 (52.10)	1.937 (49.20)	1.436 (36.47)	1.350 (34.29)	1.405 (35.69) 1.394 (35.41)	M38 X 1.0-6g		1.515 (38.48)	1.455 (36.96)
23	1.500 (38.10)	2.201 (55.91) 2.177 (55.30)	2.063 (52.40)	1.561 (39.65)	1.476 (37.49)	1.531 (38.89) 1.520 (38.61)	M41 X 1.0-6g		1.640 (41.66)	1.580 (40.13)
25	1.625 (41.28)	2.323 (59.00) 2.299 (58.39)	2.189 (55.60)	1.686 (42.82)	1.602 (40.69)	1.653 (41.99) 1.642 (41.71)	M44 X 1.0-6g		1.765 (44.83)	1.705 (43.31)

2333-2001-H8 PISTON SEALED WELD MOUNT RECEPTACLE



Dimensions				
SHELL SIZE	A THREAD	ø B ±.006	ø C ±.006	D
9	.6250-1P-3L-TS-2A	0.935 (23.75)	0.978 (24.84)	0.131 (3.33) 0.121 (3.07)
11	.7500-1P-3L-TS-2A	1.057 (26.85)	1.100 (27.94)	
13	.8750-1P-3L-TS-2A	1.183 (30.05)	1.226 (31.14)	
15	1.0000-1P-3L-TS-2A	1.309 (33.25)	1.352 (34.34)	
17	1.1875-1P-3L-TS-2A	1.396 (35.46)	1.439 (36.55)	
19	1.2500-1P-3L-TS-2A	1.541 (39.14)	1.585 (40.26)	
21	1.3750-1P-3L-TS-2A	1.683 (42.75)	1.726 (43.84)	.162 (4.11) .152 (3.86)
23	1.5000-1P-3L-TS-2A	1.848 (46.94)	1.892 (48.06)	
25	1.6250-1P-3L-TS-2A	1.935 (49.15)	1.978 (50.24)	



Dimensions			
SHELL SIZE	ø E	ø F MIN	DEPTH G ±.005
9	.990/.985	0.300 (7.62)	0.126 (3.20)
11	1.112/1.107	0.430 (10.92)	
13	1.238/1.233	0.550 (13.97)	
15	1.364/1.359	0.675 (17.15)	
17	1.451/1.446	0.795 (20.19)	
19	1.597/1.592	0.895 (22.73)	
21	1.738/1.733	1.010 (25.65)	0.157 (3.99)
23	1.894/1.899	1.135 (28.83)	
25	1.990/1.985	1.250 (31.75)	

HERMETIC CONNECTORS