

SuperNine® Glass seal hermetic



MIL-DTL-38999 Series III Type

233-263 Bulkhead feed-thru with 10G High-Speed Contacts



SPEEDMASTER™ CONNECTORS

SuperNine MIL-DTL-38999 Series III Type hermetic receptacles feature SpeedMaster 10G contact modules incorporating size 22D contacts, for Cat 6A High-Speed networks. Built to withstand the pressure differentials between internal and external environments without compromising their integrity. Hermetic sealing of 1×10^{-7} atm cc/s to ensure protection against high pressure, moisture and contaminants. Ideal for aerospace and defense applications. Rated for temperatures from -55°C to +125°C, they meet stringent military specifications, providing exceptional resistance to shock (up to 100g), vibration (up to 20g), and corrosion (salt spray per ASTM B117).

PERFORMANCE SPECIFICATIONS

- Hermeticity: $<1 \times 10^{-7}$ scHe/sec @ one ATM differential. Not for use in liquid atmosphere.
- I.R.: 5 gigaohms min @ 500 VDC
- See D.W.V. Voltage Rating Table

MATERIAL/FINISH:

- Shell and jam-nut: CRES/passivate or CRES/nickel plate
- Contacts pin: nickel/iron alloy/gold
- Contacts sockets: copper alloy/gold
- Insulator hermetic: full glass
- Insulator socket: high grade dielectric
- Grounding members: copper alloy/nickel plated
- Seals: fluorosilicone blend

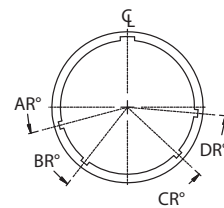
Part Number Development								
Sample Part Number	233-263	-H7	ZL	25	-7	S	N	-2
Series - Basic Part No.	233-263 = SuperNine Hermetic High-Speed Bulkhead Feedthru							
Connector Style*	H2 = Square Flange H7 = Jam-Nut DH7 = Dual O-ring, Jam-Nut H8 = Weld Mount							
Material/Finish	Z1 = 300 Series CRES; Passivated ZL = 300 Series CRES; Electroless Nickel							
Shell Size	11, 19, 21, 25							
Insert Arrangement	See Insert Arrangement Table							
Module Type	P = Pin S = Socket A = Connector Less Contacts							
Alternate Polarization	A, B, C, D, E, N = Normal (IAW MIL-DTL-38999 Series III); see alternate keyway positions table.							
Panel Thickness	2 = .250; max panel thickness							

Modification codes may be added directly to the end of any valid part number

NOTES:

1. Contact factory for other plating options
2. SpeedMaster insert arrangements are exclusive to SpeedMaster™ and are unrelated to other insert patterns of the same name
3. Glenair 233-263 is only designed to mate with Glenair 233-219-G6 connector of the same shell size, polarization, and opposite gender
4. 233-263 connector is only available as pin to socket or socket to pin
5. Contacts are non removable

Alternate Keyway Positions



Shell Size	Code	AR°	BR°	CR°	DR°
11	N	95	141	208	236
	A	113	156	182	292
	B	90	145	195	252
	C	53	156	220	255
	D	119	146	176	298
19 21 25	E	51	141	184	242
	N	80	142	196	293
	A	135	170	200	310
	B	49	169	200	244
	C	66	140	200	257
	D	62	145	180	280
	E	79	153	197	272

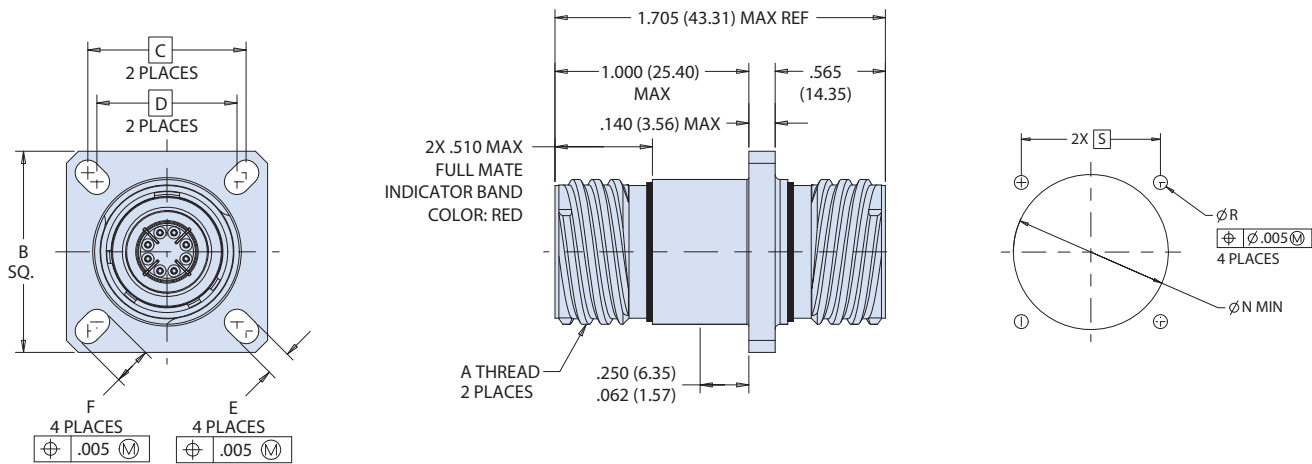
SUPERNINE GLASS-TO-METAL SEAL HERMETIC CONNECTORS

MIL-DTL-38999 Series III Type

233-263 Bulkhead feed-thru with 10G High-Speed Contacts

HERMETIC CONNECTORS

H2 - SQUARE FLANGE MOUNT BULKHEAD FEED-THRU

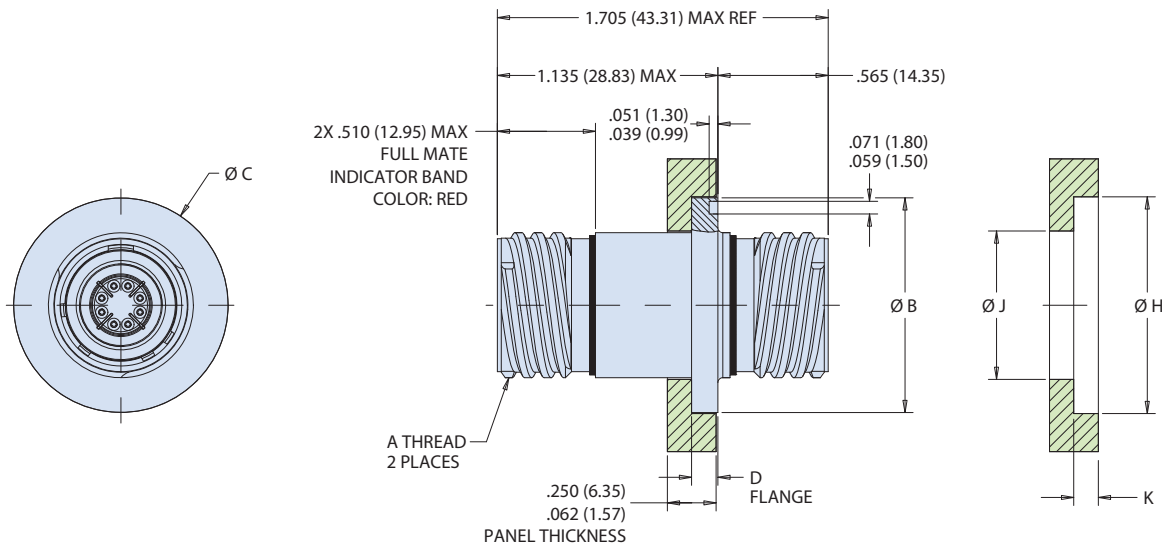


Square Flange Mount Dimensions								
Shell Size	A THREAD	B	C Basic	D Basic	E	F	ØR Holes	S Basic
11	.7500-.1P-.3L-TS-2A	1.040 (26.42) 1.016 (25.81)	0.812 (20.62)	0.719 (18.26)		0.198 (5.03) 0.190 (4.83)		0.812 (20.62)
19	1.2500-.1P-.3L-TS-2A	1.449 (36.80) 1.425 (36.20)	1.156 (29.36)	1.062 (26.97)	0.136 (3.45) 0.120 (3.05)	0.202 (5.13) 0.186 (4.72)	0.133 (3.38) 0.123 (3.12)	1.156 (29.36) 1.250 (31.75)
21	1.3750-.1P-.3L-TS-2A	1.575 (40.00) 1.551 (39.40)	1.250 (31.75)	1.156 (29.36)				
25	1.6250-.1P-.3L-TS-2A	1.823 (46.30) 1.799 (45.69)	1.500 (38.10)	1.375 (34.92)	0.162 (4.11) 0.146 (3.71)	0.250 (6.35) 0.234 (5.94)	0.155 (3.94) 0.145 (3.68)	1.500 (38.10)

MIL-DTL-38999 Series III Type

233-263 Bulkhead feed-thru with 10G High-Speed Contacts

H8 - WELD MOUNT BULKHEAD FEED-THRU



HERMETIC CONNECTORS

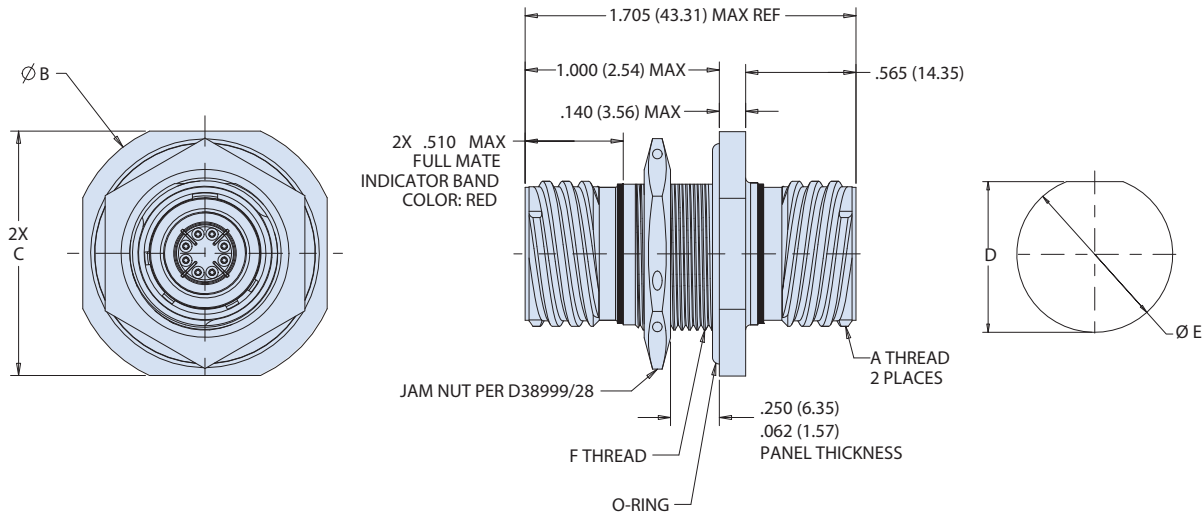
Weld Mount Dimensions							
Shell Size	A Thread	B	C	D	$\varnothing H$	$\varnothing J$	$\varnothing K \pm .005 (0.13)$
11	.7500-.1P-.3L-TS-2A	1.063 (27.00) 1.051 (26.70)	1.106 (28.09) 1.094 (27.79)		1.112 (28.24) 1.107 (28.12)	.760 (19.30)	.126 (3.20)
19	1.2500-.1P-.3L-TS-2A	1.547 (39.29) 1.535 (38.99)	1.591 (40.41) 1.579 (40.11)	0.134 (3.40) 0.118 (3.00)	1.597 (40.56) 1.592 (40.44)	1.260 (32.00)	
21	1.3750-.1P-.3L-TS-2A	1.689 (42.90) 1.677 (42.60)	1.732 (43.99) 1.720 (43.69)		1.738 (44.15) 1.733 (44.02)	1.385 (35.18)	
25	1.6250-.1P-.3L-TS-2A	1.941 (49.30) 1.929 (49.00)	1.984 (50.39) 1.972 (50.09)	0.165 (4.19) 0.149 (3.78)	1.990 (50.55) 1.985 (50.42)	1.635 (41.53)	

MIL-DTL-38999 Series III Type

233-263 Bulkhead feed-thru with 10G High-Speed Contacts

HERMETIC CONNECTORS

H7 - JAM-NUT MOUNT BULKHEAD FEED-THRU



Jam-Nut Mount Dimensions				
Shell Size	A Thread	$\varnothing B$	C Max	F Thread
11	.7500-.1P-.3L-TS-2A	1.375 (34.92)	1.252 (31.80)	M20x1.0-6g 0.100R
19	1.2500-.1P-.3L-TS-2A	1.937 (49.20)	1.811 (46.00)	M35x1.0-6g 0.100R
21	1.3750-.1P-.3L-TS-2A	2.063 (52.40)	1.937 (49.20)	M38x1.0-6g 0.100R
25	1.6250-.1P-.3L-TS-2A	2.311 (58.70)	2.189 (55.60)	M44x1.0-6g 0.100R

Dual O-Ring Jam-Nut Mount Dimensions				
Shell Size	A Thread	$\varnothing B$	C Max	F Thread
11	.7500-.1P-.3L-TS-2A	1.625 (41.28)	1.500 (38.10)	M20x1.0-6g 0.100R
19	1.2500-.1P-.3L-TS-2A	2.189 (55.60)	2.063 (52.40)	M35x1.0-6g 0.100R
21	1.3750-.1P-.3L-TS-2A	2.311 (58.70)	2.189 (55.60)	M38x1.0-6g 0.100R
25	1.6250-.1P-.3L-TS-2A	2.625 (66.68)	2.400 (60.96)	M44x1.0-6g 0.100R

Jam-Nut Panel Cut-Out Dimensions		
SHELL SIZE	$\varnothing D$	E FLAT
11	0.835 (21.21)	0.771 (19.58)
	0.825 (20.96)	0.761 (19.33)
19	1.395 (35.43)	1.335 (33.91)
	1.385 (35.18)	1.325 (33.65)
21	1.520 (38.61)	1.460 (37.08)
	1.510 (38.35)	1.450 (36.83)
25	1.770 (44.96)	1.710 (43.43)
	1.760 (44.70)	1.700 (43.18)