

882-022 PC Tail, Panel Mount Receptacle, Push-Pull QDC Coupling



100 ohm, Ultraminiature. Rear panel mount. PCB Connector.

882-022 SuperFly Datalink receptacles have one El Ochito® octaxial contact ringed by eighteen discrete socket contacts. Attach to .125 (3.17) maximum thickness panel with spanner nut. PC tail contacts are gold plated or solder dipped in 63/37 tin-lead. Contacts are epoxy-sealed and are non-removable. EMI spring for low shell-to-shell resistance. Fluorosilicone O-rings for water-tight seal. *Mates to 882-019 & 882-021 connectors.*

SIZE AND WEIGHT SAVING

- .805 inch (20.45 mm.) diameter

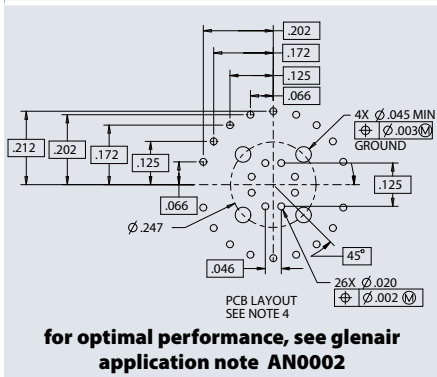
HIGH SPEED

- HDMI and DisplayPort
- El Ochito® Technology

HARSH ENVIRONMENT

- EMI protection
- Water ingress
- Shock and vibration

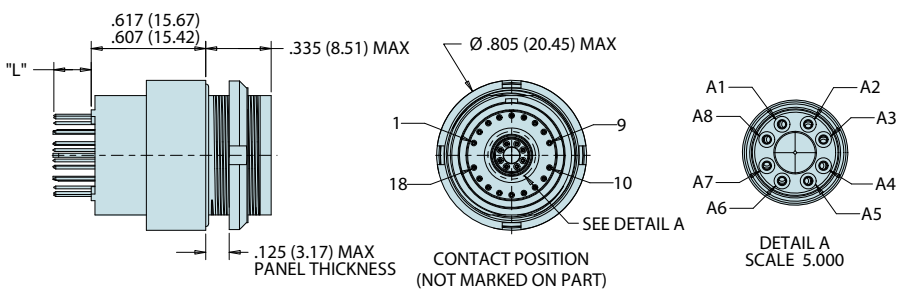
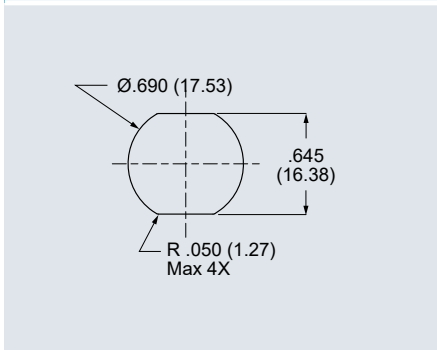
Recommended PC Board Layout



How To Order PCB Receptacle for HDMI and DisplayPort

Sample Part Number	882-022	- Z2	S	-.080
Product	882-022 = Panel Mount PC Tail Receptacle			
Shell Finish	M = Electroless Nickel (aluminum shell) MT = Nickel-PTFE (aluminum shell) ZR = Black Zinc-Nickel (aluminum shell) Z2 = Gold (aluminum shell) ZMT = Nickel-PTFE (stainless steel shell)			
PC Tail Finish	S = Solder dip, 63/37 tin-lead G = Gold			
PC Tail Length	.080 = .080" (2.03 mm.) .175 = .175" (4.45 mm.)	.125 = .125" (3.18 mm.) .200 = .200" (5.08 mm.)		

Recommended Panel Cutout



Specifications

- Operating temp.: -65° to +175°C
- Impedance: 100 ohms
- DWV: 500 Vrms unmatd
- Current Rating: 1.5 A
- IR: 1000 MΩ min.
- Durability: 2000 mating cycles
- Ingress protection: IP67

Construction

- Shell, jam-nut: aluminum alloy or SST
- Insulators: low-dielectric material
- Contacts: copper alloy, 50 microinches gold over nickel plating
- O-rings: fluorosilicone blend
- Potting: epoxy

Spanner Nut Tightening Tool

Nickel-plated tool steel, 1/4" sq. drive
 23 - 28 in.-lbs. recommended torque

600-272-A

El Ochito® Red