

882-012 PC Tail Receptacle, Threaded Coupling, USB 3.0



SuperSpeed USB. Ultraminiature. Rear panel mount. PCB terminals.

882-012 SuperFly Datalink connectors have one, El Ochito® octaxial contact housing eight socket contacts. Attach to .100" (2.54 mm) maximum thickness panel with spanner nut. PC tail contacts are gold plated or solder dipped in 63/37 tin-lead. Contacts are epoxy-sealed and are non-removable. Gold-plated EMI spring for low shell-to-shell resistance. Fluorosilicone O-rings for water-tight seal. *Mates to 882-011 plug.*

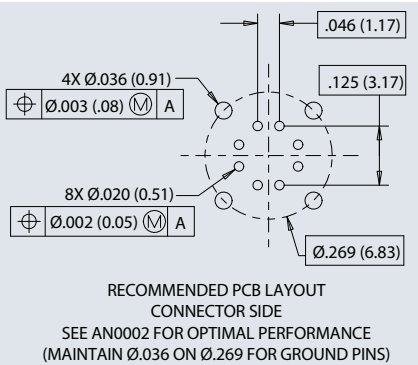
SUPERSPEED USB

- 5 Gbps
- Low-dielectric insulators

HARSH ENVIRONMENT

- EMI protection
- Water ingress
- Shock and vibration

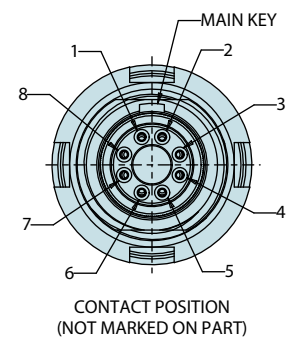
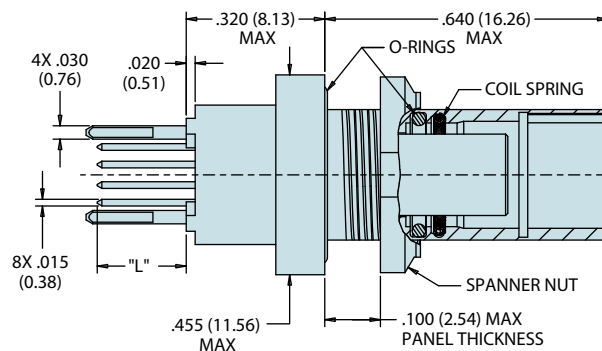
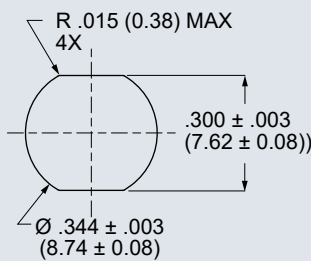
Recommended PC Board Layout



How To Order Push-Pull, Straight PCB Receptacles

Sample Part Number	882-012	- Z2	S	-.080
Product	882-012 = Panel Mount PC Tail Receptacle			
Shell Finish	M = Electroless Nickel (aluminum shell) MT = Nickel-PTFE (aluminum shell) ZR = Black Zinc-Nickel (aluminum shell) Z2 = Gold (aluminum shell) ZMT = Nickel-PTFE (stainless steel shell)			
PC Tail Finish	S = Solder dip, 63/37 tin-lead G = Gold			
PC Tail Length	.080 = .080" (2.03 mm) .175 = .175" (4.45 mm)	.125 = .125" (3.18 mm)	.200 = 200" (5.08 mm)	

Recommended Panel Cutout



Specifications

- Operating temp.: -65° to +175°C
- Impedance: 90 ohms
- DWV: 500 Vrms unmatd
- Current Rating: 1.5 A
- IR: 1000 MΩ min.
- Durability: 2000 mating cycles
- Ingress protection: IP67

Construction

- Shell, jam-nut: aluminum alloy or SST
- Insulators: high-grade rigid dielectric
- Contacts: copper alloy, 50 microinches gold over nickel plating
- O-rings: fluorosilicone
- EMI spring: stainless steel, gold plated
- Potting: epoxy

Spanner Nut Tightening Tool

Nickel-plated tool steel, 1/4" sq. drive
 13 - 18 in.-lbs. recommended torque



600-202-E

