



882-016 90° PC Tail Panel Plug, Push-Pull Coupling, USB 3.0



SuperSpeed USB. Ultraminiature. Rear panel mount. PCB terminals.

882-016 SuperFly Datalink connectors have one, El Ochito® octaxial contact housing eight socket contacts. Attach to .100 (2.54) max thickness panel with spanner nut. PC tail contacts are gold plated or solder dipped in 63/37 tin-lead. Contacts are epoxy-sealed and non-removable. EMI spring for low shell-to-shell resistance. Fluorosilicone O-rings for water-tight seal. *Mates to 882-009, -018, -033 and -036 plug.*

SUPER SPEED USB

- 5 Gbps
- Low-dielectric insulators

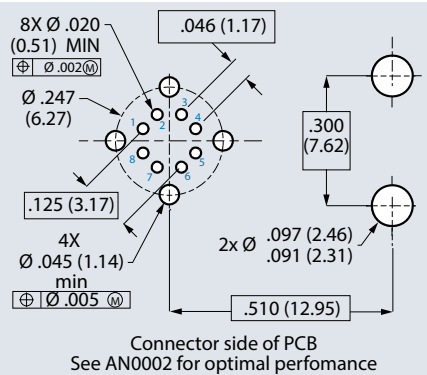
FAST ASSEMBLY

- Pre-tinned PC tail contacts
- Epoxy-sealed terminals

HARSH ENVIRONMENT

- EMI protection, water ingress, shock and vibration

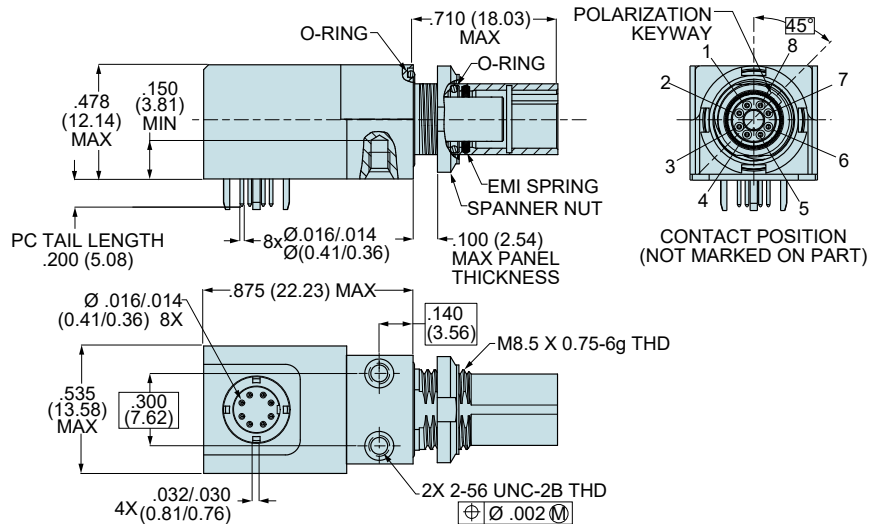
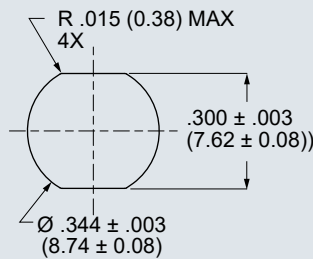
PC Board Layout



How To Order Push-Pull Right Angle PCB Plug

Sample Part Number	882-016	-M	G	-.125
Product	882-016 = Right Angle Panel Mount PC Tail Plug			
Shell Finish	M = Electroless Nickel (aluminum shell) MT = Nickel-PTFE (aluminum shell) ZR = Black Zinc-Nickel (aluminum shell) Z2 = Gold (aluminum shell) ZMT = Nickel-PTFE (stainless steel shell)			
PC Tail Finish	S = Solder dip, 63/37 tin-lead G = Gold			
PC Tail Length	.200 = .200 in. (5.08 mm.)			

Panel Cutout



Specifications

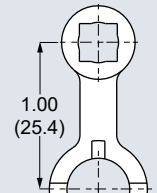
- **Operating temp.:** -65° to +175°C
- **Impedance:** 90 ohms
- **DWV:** 100 Vrms unmatd
- **Current Rating:** 1.5 A
- **IR:** 100 MΩ min. @ 150 Vdc
- **Durability:** 2000 mating cycles
- **Ingress protection:** IP67

Construction

- **Shell, jam-nut:** aluminum alloy or SST
- **Insulators and tray:** high-grade rigid dielectric
- **Contacts:** copper alloy, 50 microinches gold over nickel plating
- **O-rings:** fluorosilicone
- **EMI spring:** stainless steel, gold plated
- **Potting:** epoxy

Spanner Nut Tightening Tool

Nickel-plated tool steel, 1/4" sq. drive
 13 - 18 in.-lbs. recommended torque



600-202-E