



BATTLE-TESTED

**STAR-PAN™**

**Soft Goods: Mission Kit Bag and Pouches, MOLLE Pouches, and Connector Dust Caps**

**SOFT GOODS: MISSION KIT BAG AND POUCHES**

| Part No.       | Description                                 | Weight            | Length                                      | Material/Color                   | ECCN / EAR | Page No. |
|----------------|---|-------------------|---|----------------------------------|------------|----------|
| <b>TS4-011</b> | Mission Kit Bag with Pouches - Complete Kit | 2.08 lbs.         | L = 20" W = 14" D = 2.5"<br>(outer Kit Bag) | Cordura/Black                    | 99         | 163      |
| <b>TS4-001</b> | Mission Kit Bag                             | .9 lbs            | L = 20" W = 14" D = 2.5"                    | Cordura/Black                    | 99         | 163      |
| <b>TS4-002</b> | Large Pouch                                 | .18 lbs.          | W = 18" H = 4"                              | Cordura/Black                    | 99         | 164      |
| <b>TS4-003</b> | Square Pouch                                | .9 lbs.           | W = 10" H = 10"                             | Cordura/Black                    | 99         | 164      |
| <b>TS4-004</b> | Medium Pouch                                | .1 lbs.           | W = 9.5" H = 5"                             | Cordura/Black                    | 99         | 164      |
| <b>TS4-017</b> | STAR-PAN II MOLLE Pouch                     | 1.1 oz.           | L = 3.5" W = 2.5" H = 1"                    | Cordura/Desert Tan or Camouflage | 99         | 165      |
| <b>TS4-018</b> | STAR-PAN IV MOLLE Pouch                     | (consult factory) | (consult factory)                           | Cordura/Desert Tan or Camouflage | 99         | 165      |
| <b>TS4-009</b> | STAR-PAN VI MOLLE Pouch                     | 4 oz.             | L = 5" W = 7" H = 1.5"                      | Cordura/Desert Tan or Camouflage | 99         | 165      |
| <b>TS4-028</b> | MISSION MANAGER MOLLE Pouch                 | (consult factory) | L = 4" W = 2"                               | Cordura/Desert Tan or Camouflage | 99         | 165      |
| <b>TS4-022</b> | Connector dust caps                         | (consult factory) | various                                     | Tan or Black                     | 99         | 166      |
| <b>TS4-024</b> | Dust Caps for in-line cable receptacles     | (consult factory) | various                                     | Tan or Black                     | 99         | 167      |
| <b>TS4-025</b> | Dust Caps for in-line cable plugs           | (consult factory) | various                                     | Tan or Black                     | 99         | 167      |

BATTLE-TESTED

STAR-PAN™

# Soft Goods: Mission Kit Bag and Pouches



SOFT GOODS



## MISSION KIT BAG SPECIFICATIONS

- Designed to store, organize, and transport all components of the Glenair STAR-PAN system: hubs, cables, adapters, and accessories
- Lightweight, yet rugged and durable
- Black Cordura / nylon mesh construction
- Paracord zipper pulls
- Mission Bag is MOLLE-compatible
- Pouches are user-configurable with secure Velcro attachment to Mission Bag
- Order Bag and Pouches separately, or as a kit



QUALIFIED FOR USE WITH  
ALL STAR-PAN POWER / DATA HUBS:  
LIGHT, I, II, IV, AND VI

### HOW TO ORDER

|   |  |
|---|--|
| <b>Sample Part Number:</b> <b>TS4-011</b> |  |
| Soft Goods                                | Mission Kit Bag with Pouches - Complete Kit  |
| Kit Contents                              | <b>TS4-001</b> – Mission Bag (qty. 1)<br><b>TS4-002</b> – Large Pouch (qty. 3)<br><b>TS4-003</b> – Square Pouch (qty. 2)<br><b>TS4-004</b> – Medium Pouch (qty. 2) |



Front view



Back view

## MISSION KIT BAG SPECIFICATIONS

- Designed to store, organize, and transport all components of the Glenair STAR-PAN system: hubs, cables, adapters, and accessories
- Black Cordura construction
- Molle web on front of bag
- Front loop Velcro for patches
- Full loop fabric fastening interior for modularity and organization
- Rear pocket for additional storage
- Grab Handles
- Paracord zipper pulls
- Length = 20" Width = 14" Depth = 2.5" Weight = .9 lbs.

### HOW TO ORDER

|   |                 |
|---|-----------------|
| <b>Sample Part Number:</b> <b>TS4-001</b> |                 |
| Soft Goods                                | Mission Kit Bag |

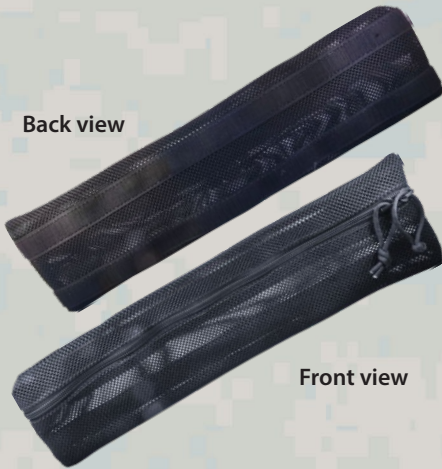
BATTLE-TESTED

STAR-PAN™

# Soft Goods: Mission Kit Bag and Pouches



SOFT GOODS



## STAR-PAN II HUB AND CABLE POUCH SPECIFICATIONS

- Designed to hold STAR-PAN II Power/Data Hubs or STAR-PAN system cables inside the Glenair STAR-PAN Mission Kit Bag
- Black Cordura mesh construction for quick visual reference of contents
- Dual rear Velcro hook strips
- Paracord zipper pulls
- Width = 18" Height = 4" Weight = .18 lbs.

### HOW TO ORDER

|                            |                |
|----------------------------|----------------|
| <b>Sample Part Number:</b> | <b>TS4-002</b> |
| Soft Goods                 | Pouch, large   |



## STAR-PAN IV / VI HUB SQUARE POUCH SPECIFICATIONS

- Designed to hold STAR-PAN IV / VI hubs inside the Mission Kit Bag
- Black Cordura mesh construction for quick visual reference of contents
- Dual rear Velcro hook strips
- Paracord zipper pulls
- Width = 10" Height = 10" Weight = .9 lbs.

### HOW TO ORDER

|                            |                |
|----------------------------|----------------|
| <b>Sample Part Number:</b> | <b>TS4-003</b> |
| Soft Goods                 | Pouch, square  |



## ADAPTER / NON-CABLED ITEM POUCH SPECIFICATIONS

- Designed for use inside the Glenair STAR-PAN Mission Kit Bag
- Black Cordura mesh construction for quick visual reference of contents
- Dual rear Velcro hook strips
- Paracord zipper pulls
- Width = 9.5" Height = 5" Weight = .1 lbs.

### HOW TO ORDER

|                            |                |
|----------------------------|----------------|
| <b>Sample Part Number:</b> | <b>TS4-004</b> |
| Soft Goods                 | Pouch, medium  |

BATTLE-TESTED

STAR-PAN™

Pouches & Accessories



SOFT GOODS



Universal radio pouch

UNIVERSAL RADIO POUCH

- Ranger Green, Black, Coyote Brown, Multicam, or Grey Cordura
- Adjustable Ride Height
- MOLLE or Cummerbund Capable

HOW TO ORDER

|                            |   |  |           |
|----------------------------|---|--|-----------|
| <b>Sample Part Number:</b> |   | <b>TS4-033</b>                           | <b>-X</b> |
| Universal Radio Pouch      | Adjustable universal handheld radio pouch |  |           |
| Color Option               | -B = Black<br>-MC = Multicam              | -CB = Coyote Brown<br>-RG = Ranger Green | -G = Grey |



BB2590 battery pouch

BB2590 BATTERY POUCH

- Ranger Green, Black, Coyote Brown, Multicam, or Grey Cordura
- Fits BB2590 and BB5590 Batteries
- Fully Adjustable to manager accessories

HOW TO ORDER

|                            |  |  |           |
|----------------------------|--|--|-----------|
| <b>Sample Part Number:</b> |  | <b>TS4-034</b>                           | <b>-X</b> |
| BB2590 Battery Pouch       | Adjustable battery and accessory pouch |  |           |
| Color Option               | -B = Black<br>-MC = Multicam           | -CB = Coyote Brown<br>-RG = Ranger Green | -G = Grey |



STAR-PAN II MOLLE pouch

STAR-PAN II MOLLE POUCH SPECIFICATIONS

- Tan or Camouflage Cordura
- Single-button snap-lock for mounting on MOLLE loops
- Front loop Velcro securely retains STAR-PAN II hub

HOW TO ORDER

|                            |                         |                |           |
|----------------------------|-------------------------|----------------|-----------|
| <b>Sample Part Number:</b> |                         | <b>TS4-017</b> | <b>-T</b> |
| STAR-PAN MOLLE Pouch       | STAR-PAN II MOLLE pouch |                |           |
| Color Option               | -T = Tan -C = Camo      |                |           |



**STAR-PAN IV  
MOLLE pouch**

**STAR-PAN IV MOLLE POUCH SPECIFICATIONS**

- Tan or Camouflage Cordura
- Single-button snap-lock for mounting on MOLLE loops
- Front loop Velcro securely retains STAR-PAN IV hub

**HOW TO ORDER**

|                            |                                  |                |           |
|----------------------------|----------------------------------|----------------|-----------|
| <b>Sample Part Number:</b> |                                  | <b>TS4-018</b> | <b>-T</b> |
| STAR-PAN MOLLE Pouch       | STAR-PAN IV MOLLE pouch          |                |           |
| Color Option               | <b>-T</b> = Tan <b>-C</b> = Camo |                |           |



**STAR-PAN VI  
MOLLE pouch**

**STAR-PAN VI MOLLE POUCH SPECIFICATIONS**

- Tan or Camouflage Cordura
- Single-button snap-lock for mounting on MOLLE loops
- Front loop Velcro securely retains STAR-PAN II hub

**HOW TO ORDER**

|                            |                                  |                |           |
|----------------------------|----------------------------------|----------------|-----------|
| <b>Sample Part Number:</b> |                                  | <b>TS4-009</b> | <b>-C</b> |
| STAR-PAN MOLLE Pouch       | STAR-PAN VI MOLLE pouch          |                |           |
| Color Option               | <b>-T</b> = Tan <b>-C</b> = Camo |                |           |



**MISSION MANAGER  
MOLLE pouch**

**MISSION MANAGER MOLLE POUCH SPECIFICATIONS**

- Tan or Camouflage Cordura
- Single-button snap-lock for mounting on MOLLE loops
- Front loop Velcro securely retains MISSION MANAGER

**HOW TO ORDER**

|                            |                                  |                |           |
|----------------------------|----------------------------------|----------------|-----------|
| <b>Sample Part Number:</b> |                                  | <b>TS4-028</b> | <b>-T</b> |
| STAR-PAN MOLLE Pouch       | STAR-PAN II MOLLE pouch          |                |           |
| Color Option               | <b>-T</b> = Tan <b>-C</b> = Camo |                |           |

BATTLE-TESTED

STAR-PAN™

Soft Goods: Dust Caps



SOFT GOODS

**SPECIFICATIONS**

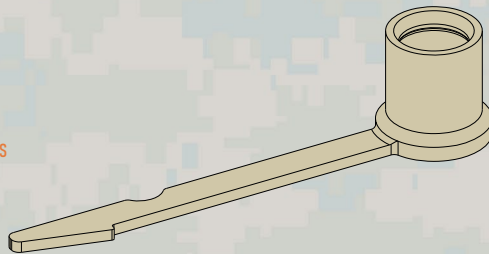
- Rugged and reliable environmental protection for Mighty Mouse 807 series size 6 connectors provided on STAR-PAN system hubs and cables
- Santoprene material
- Plug and receptacle designs
- Self-retaining and zip tie styles
- Black or tan color

**HOW TO ORDER**

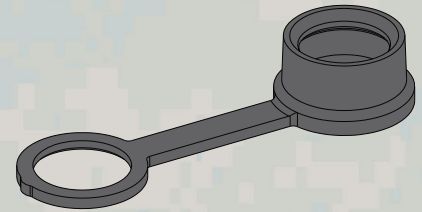
|                             |                                     |           |           |
|-----------------------------|-------------------------------------|-----------|-----------|
| <b>Sample Part Number:</b>  | <b>TS4-022</b>                      | <b>-3</b> | <b>-T</b> |
| STAR-PAN Connector Dust Cap | STAR-PAN system connector dust caps |           |           |
| Configuration               | -3, -4, -5, -6 (see diagrams)       |           |           |
| Color Option                | -T = Tan   Omit = Black             |           |           |



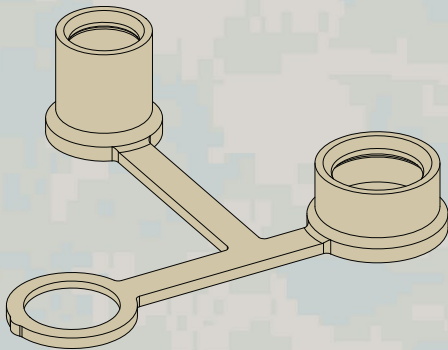
QUALIFIED FOR USE WITH ALL STAR-PAN POWER / DATA HUBS  
LIGHT, II, IV, AND VI



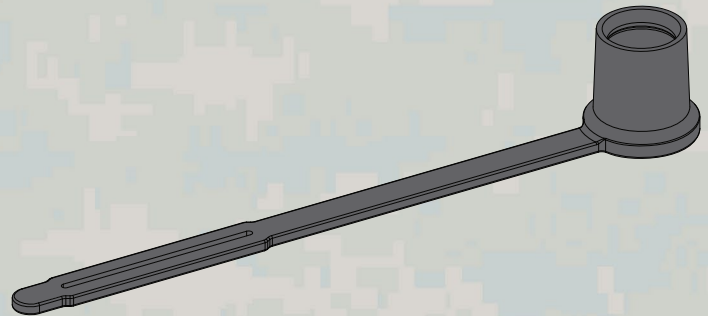
-3 for size 6 plug,  
zip tie loop, 1.60" length



-4 for size 6 receptacle,  
self-retaining, external sealing



-5 size 6 receptacle and plug,  
self-retaining, external sealing



-6 for size 6 plug,  
zip tie loop, 2.25" length

BATTLE-TESTED

STAR-PAN™

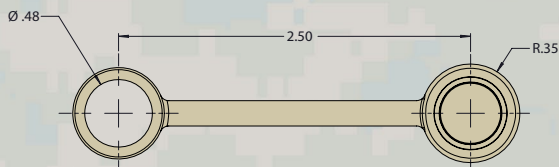
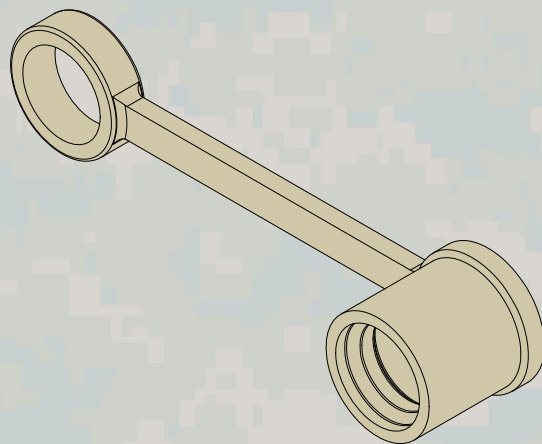
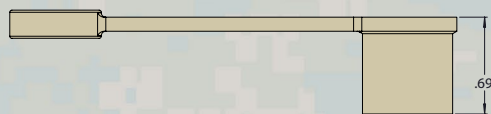
Soft Goods: Dust Caps



SOFT GOODS

HOW TO ORDER

|                             |   |           |
|-----------------------------|---|-----------|
| <b>Sample Part Number:</b>  | <b>TS4-024</b>  | <b>-T</b> |
| STAR-PAN Connector Dust Cap | STAR-PAN system receptacle dust cap for in-line cable receptacle connectors |           |
| Color Option                | -T = Tan Omit = Black   |           |



QUALIFIED FOR USE WITH ALL STAR-PAN POWER / DATA HUBS  
LIGHT, II, IV, AND VI

HOW TO ORDER

|                             |   |           |
|-----------------------------|---|-----------|
| <b>Sample Part Number:</b>  | <b>TS4-025</b>  | <b>-T</b> |
| STAR-PAN Connector Dust Cap | STAR-PAN system receptacle dust cap for in-line cable plug connectors |           |
| Color Option                | -T = Tan Omit = Black   |           |

