

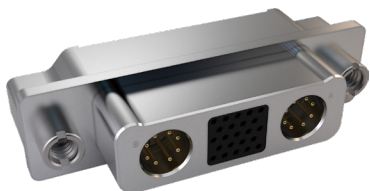
SERIES 79

Advanced-Performance Rectangular with SpeedMaster™ 10G high-speed contacts



7925-007 Straight PCB Mount Connector Plug

Part Number Development						
Sample Part Number	7925-007	P	C2-23	M	N	-A
Series - Basic Part No.	7925-007 Straight PCB Mount Connector Plug					
Connector Gender	P = Plug					
Shell Size/Insert Arrangements	See Insert Arrangements table					
Shell Finish	M = Electroless Nickel MT = Nickel Teflon E = Chemfilm Z2 = Gold UC = Black Zinc Cobalt J = Yellow Cadmium NF = Olive Drab Cadmium					
Hardware Option	See Hardware Options table					
Optional Shell Keying	See Mod Code 1104 Omit for None					



Hardware Options			
N No Hardware	P Jackpost	R1 Thru R6 Panel Mount Jackpost	G Guide Pin
Thread Size is #10-32	Thread Size is #8-32	R1 - .032 (.081) Panel R2 - .050 (1.27) Panel R3 - .062 (1.59) Panel Thread sizes same as "P" jackpost option	R4 - .080 (2.03) Panel R5 - .093 (2.36) Panel R6 - .125 (3.18) Panel

NOTES

1. Refer to drawing 799-008 for complete materials, and finishes specifications.
2. Contacts are ordered separately.
3. SpeedMaster contacts may be ordered pre-terminated via 8585-0001, or contact the factory for complete cable contact.
4. All SpeedMasters are common ground with each other and the shell.
5. Refer to 799-336 for PCB footprints.

Insert Arrangements		
A1 1X SPEEDMASTER	B2 2X SPEEDMASTER	B1-16 1X SPEEDMASTER 16X #22HD
C3 3X SPEEDMASTER	C2-23 2X SPEEDMASTER 23X #22HD	C1-46 1X SPEEDMASTER 46X #22HD
D4 4X SPEEDMASTER	D2-48 2X SPEEDMASTER 48X #22HD	

[illegible]

Dimensions				
Shell Size	A Max	B	C Max	D ± .002
A	1.455 (36.96)	1.075 (27.30)	0.611 (15.52)	0.720 (18.29)
B	1.895 (48.13)	1.515 (38.48)	1.051 (26.70)	1.160 (29.46)
C	2.335 (59.31)	1.955 (49.66)	1.491 (37.87)	1.600 (40.64)
D	2.775 (70.49)	2.395 (60.83)	1.931 (49.05)	2.040 (51.82)