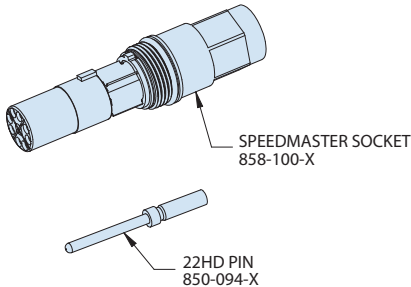
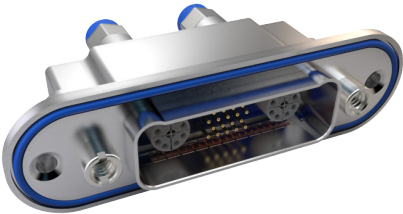


SERIES 79  
Advanced-Performance Rectangular  
with SpeedMaster™ 10G high-speed contacts



7925-004 Rear Panel Mount Connector Receptacle

Part Number Development								
Sample Part Number	7925-004	N	C2-23	M	N	F	C	-A
Series - Basic Part No.	7925-004 Rear Panel Mount Connector Receptacle							
N-Less Contacts	Connectors are supplied less contacts, order separately via these Part Numbers: 858-100-X SpeedMaster Socket contacts, individual 8585-0001 SpeedMaster Socket contacts, pre-terminated (Use order code "B" for P1) 850-094-X 22HD Pin contacts, individual							
Shell Size/Insert Arrangements	See Insert Arrangements table							
Shell Finish	M = Electroless Nickel    MT = Nickel Teflon    E = Chemfilm    Z2 = Gold UC = Black Zinc Cobalt    J = Yellow Cadmium    NF = Olive Drab Cadmium							
Hardware Option	See Hardware Options table							
O-Ring Option	C = Conductive    F = Fluorosilicone    S = Metal EMI Spring    N = None							
Backshell Geometry	C = Clam Shell    S = Single Piece							
Optional Shell Keying	See Mod Code 1104 Omit for None							



Hardware Options		
N No Hardware	P Jackpost	B Guide Bushing
Thread Size is #10-32	Thread Size is #8-32	Connector Supplied with Non-Removable Guide Bushing

Insert Arrangements		
A1 1X SPEEDMASTER	B2 2X SPEEDMASTER	B1-16 1X SPEEDMASTER 16X #22HD
C3 3X SPEEDMASTER	C2-23 2X SPEEDMASTER 23X #22HD	C1-46 1X SPEEDMASTER 46X #22HD
D4 4X SPEEDMASTER	D2-48 2X SPEEDMASTER 48X #22HD	

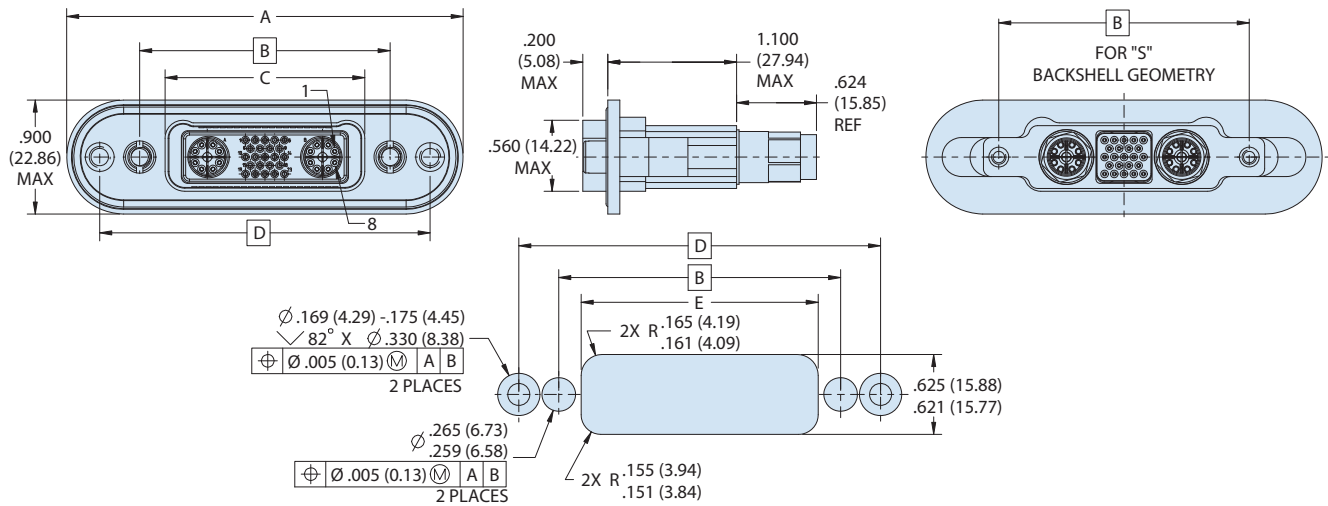
NOTES

1. Refer to drawing 799-008 for complete materials and finishes specifications.
2. Contacts are ordered separately. SpeedMaster contacts may be ordered pre-terminated via 8585-0001, or contact the factory for complete cable contact.

SERIES 79  
Advanced-Performance Rectangular  
with SpeedMaster™ 10G high-speed contacts

SERIES  
79

7925-004 Rear Panel Mount Connector Receptacle



Dimensions					
Shell Size	A Max	B	C Max	D	E ± .002
A	1.455 (36.96)	1.075 (27.30)	0.611 (15.52)	1.699 (43.15)	0.720 (18.29)
B	1.895 (48.13)	1.515 (38.48)	1.051 (26.70)	2.139 (54.33)	1.160 (29.46)
C	2.335 (59.31)	1.955 (49.66)	1.491 (37.87)	2.579 (65.51)	1.600 (40.64)
D	2.775 (70.49)	2.395 (60.83)	1.931 (49.05)	3.019 (76.68)	2.040 (51.82)