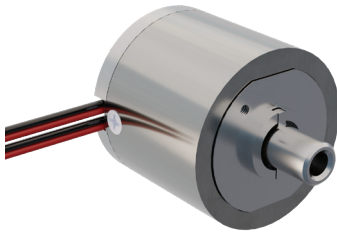


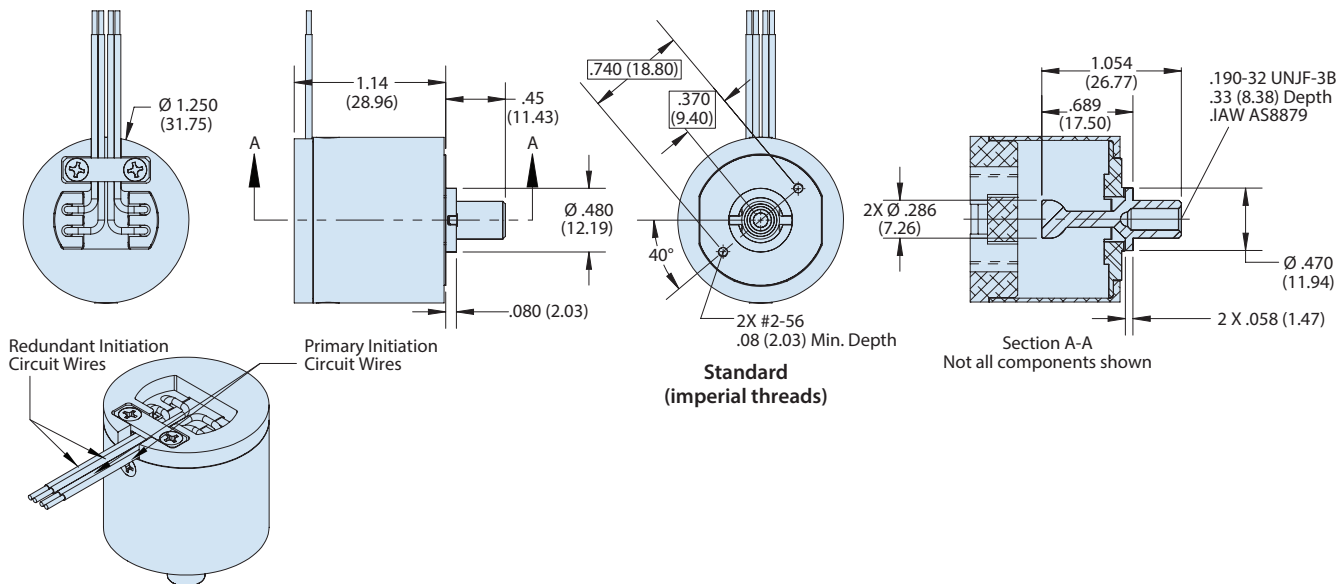
SERIES 06 Hold-Down and Release Mechanisms



061-036 Medium-Duty HDRM · 90° Bend · Redundant circuit
1000 lb release preload



HOW TO ORDER			
Sample Part No.	061-036	-M	-1450
Basic Part No.	Medium-Duty HDRM, Redundant Circuit		
Metric Screw Threads	-M = Metric Omit for standard		
Mod Code	-1450 = 80µin (2µm) wire silver plating XL-ETFE Omit for standard MS22759/44 wire		



FEATURES AND BENEFITS

- Redundant initiation: 2 initiation points
- Field refurbishable: Initiator can be replaced in less than 15 minutes by trained personnel
- Packaging: External housing typically supplied with two mounting points. Custom housings and mountings available
- Connectorization: Standard design supplied with wire inputs. Connectorized versions available.
- Initiation circuit wires supplied 18" standard. Custom lengths are available, consult factory.

TECHNICAL DATA	
Tested Capability	
Glenair similar model qualified see factory for details	
Electrical Characteristics	
Initiation Circuit Resistance	<2.0 Ohms
DC Insulation Resistance	>2 MΩ at 250 VDC Nominal Actuation
Current: 3.5 Amps	< 35 msec
Minimum Actuation Current	2.0 Amps, < 150 Msec
No Fire Current	0.25 Amp for 5 min., all conditions
Physical Characteristics	
Bolt	.190-32 UNJF-3B OR M5X0.8-6H
Material list	IAW MSFC-STD-3029

MATERIALS/FINISH

- Housing: Al Alloy / Electroless Nickel IAW AMS-C-26074
- Release Rod: Stainless Steel
- Insulator: Torlon
- Wire: GS22759-44 silver-plated XL-ETFE. Use Mod Code **-1450** for Red Plague resistant 80µin (2µm) Ag plating.



061-036 Medium-Duty HDDRM · 90° Bend · Redundant circuit
1000 lb release preload

