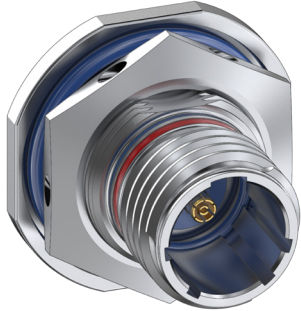
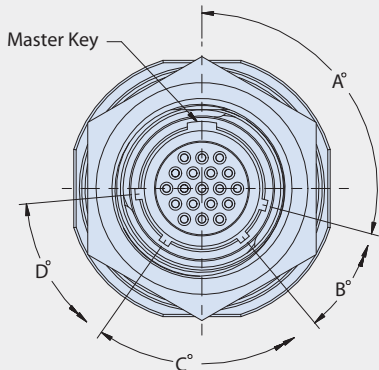


806-080 Jam-Nut
 Receptacle

**How-to-Order
 Environmental-Class**



POLARIZATION KEY CODE TABLE



POS	A	B	C	D
A	105	140	215	265
B	102	170	248	305
C	80	150	230	295
D	68	140	205	275
E	64	155	234	304
F	72	120	200	298

PART NUMBER

	806-080	-ME	24RF8	A	M	A
Base P/N	Series 806 RF Jam-Nut Receptacle					
Material/Finish	-NF Alum/ Cad/O.D. over Electroless Nickel -MT Alum/ Nickel-PTFE -ME Alum/ Electroless Nickel -ZR Alum/ Black Zinc-Nickel -ZL SST/ Nickel Plating					
Insert Arrangement	See Contact Arrangements Table					
Variable for contact Gender	A Less Pin B Less Socket					
Shell Style	M Metric Accessory Threads B Band (Platform for Attaching Cable Shield)					
Polarization Keyway Code	See Polarization Key Code Table					

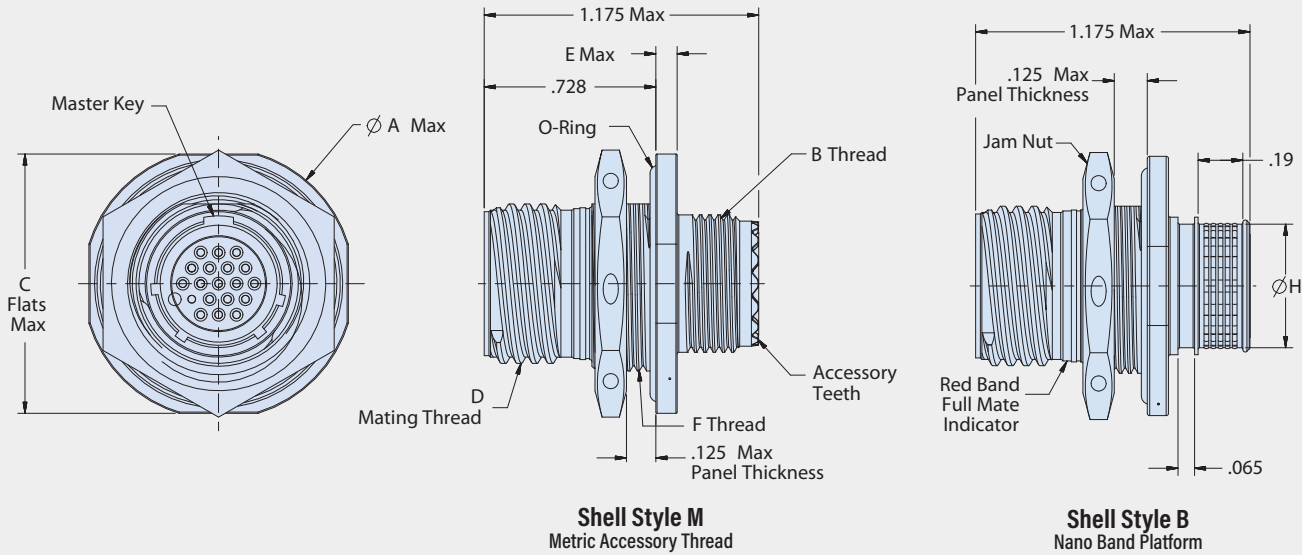
CONTACT ARRANGEMENTS

Contact Layout	#8	Contact Layout	#12	Contact Layout	#16
10RF1	1	9RF1	1	8RF1	1
16RF2	2	12RF2	2	10RF2	2
18RF3	3	14RF3	3	11RF4	4
20RF4	4	16RF4	4	12RF5	5
22RF5	5	16RF7	7	14RF7	7
24RF8	8	18RF8	8	16RF12	12
		20RF11	11	18RF15	15
		22RF13	13	20RF22	22
		24RF19	19	22RF24	24
				24RF35	35

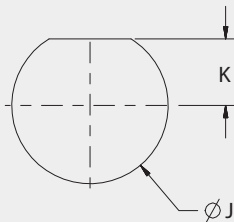
SERIES 806 MULTI-PORT RF CONNECTORS

806-080 Jam-Nut
 Receptacle

806-080



PANEL CUTOUT DIMENSIONS



Size	K +.005 -.00	Ø J +.005 -.00
8	0.256	0.601
9	0.287	0.640
10	0.318	0.719
11	0.350	0.759
12	0.381	0.837
14	0.443	0.955
16	0.505	1.073
18	0.568	1.192
20	0.630	1.349
22	0.693	1.467
24	0.775	1.624

DIMENSIONS

Shell Size	Ø A Max	B Thread	C Max	D Mating Thread	E Max	F Thread	Ø H
8	0.980	M10 X 1-6g-100R	0.920	.5000-.067P-.2L-TS-2A	0.100	M15 X 1-6g-100R	0.327
9	1.040	M12 X 1-6g-100R	0.980	.5625-.067P-.2L-TS-2A		M16 X 1-6g-100R	0.406
10	1.110	M14 X 1-6g-100R	1.050	.6250-.067P-.2L-TS-2A		M18 X 1-6g-100R	0.484
11	1.160	M15 X 1-6g-100R	1.110	.6875-.067P-.2L-TS-2A		M19 X 1-6g-100R	0.524
12	1.230	M17 X 1-6g-100R	1.170	.7500-.067P-.2L-TS-2A		M21 X 1-6g-100R	0.603
14	1.360	M19 X 1-6g-100R	1.320	.8750-.067P-.2L-TS-2A		M24 X 1-6g-100R	0.681
16	1.515	M22 X 1-6g-100R	1.444	1.000-.067P-.2L-TS-2A		M27 X 1-6g-100R	0.782
18	1.610	M25 X 1-6g-100R	1.570	1.1250-.067P-.2L-TS-2A		M30 X 1-6g-100R	0.899
20	1.850	M28 X 1-6g-100R	1.760	1.250-.067P-.2L-TS-2A	0.128	M34 X 1-6g-100R	1.043
22	2.010	M31 X 1-6g-100R	1.913	1.3750-.067P-.2L-TS-2A		M37 X 1-6g-100R	1.155
24	2.195	M34 X 1-6g-100R	2.070	1.500-.067P-.2L-TS-2A		M41 X 1-6g-100R	1.273