

# RF, Microwave, and mmWave Interconnects

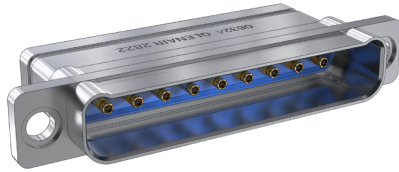
## Series 795 High-Density Multi-Port RF Rectangular Connectors



### 795-010P

#### Cable Receptacle, Pin Contacts

- Size #16 Contacts
- 65 GHz SMPS Coax
- All-Aluminum Body
- Environmental
- Two to Seventeen Ports
- Scoop-Proof



**Three to eleven ports. Size 16 contacts.** 795-010 receptacles have machined aluminum housings and fluorosilicone grommet for environmental protection. Size 16 pin contact cavities have beryllium copper retention clips. Use with 65 GHz SMPS coax contacts (P/N 852-133, ordered separately).

#### PART NUMBER

		795-010P	16-1RF9	M	L
<b>Base P/N</b>	795-010P				
<b>Arrangement No.</b>	<i>See Table 1</i> <b>16-1RF2</b> 2 contacts <b>16-2RF5</b> 5 contacts, two row <b>16-1RF3</b> 3 contacts <b>16-2RF9</b> 9 contacts, two row <b>16-1RF5</b> 5 contacts <b>16-2RF13</b> 13 contacts, two row <b>16-1RF7</b> 7 contacts <b>16-2RF17</b> 17 contacts, two row <b>16-1RF9</b> 9 contacts				
<b>Finish</b>	<b>M</b> Electroless Nickel <b>MT</b> Nickel-PTFE <b>NF</b> Olive Drab Cadmium <b>TZ</b> Tin-Zinc <b>ZR</b> Black Zinc-Nickel				
<b>Hardware Option</b>	<i>See Table 2</i> <b>L</b> Jackscrews, Socket Head #6-32, non-removable <b>K</b> Extended Jackscrews Slot Head #6-32, non-removable <b>S</b> Low-Profile Socket Head Screwlock #6-32, non-removable <b>T</b> Extended Screwlock, Knurled Head #6-32, non-removable <b>P</b> Jackposts #6-32, with nut and lock washer <b>N</b> No Hardware .198 (5.0) diameter thru-holes				

#### CONSTRUCTION

- Shell: aluminum
- Grommet: fluorosilicone
- Jackscrew: SST, passivated
- Contact retainer clip: copper alloy, unplated

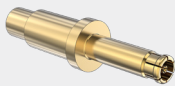
#### SPECIFICATIONS

- Operating temperature: -55 °C to +125 °C
- Shock: EIA-364-27 Condition D
- Vibration: EIA-364-28 Condition V Letter E
- Shell-to-shell resistance: 2.5 milliohms max. with ground spring option

#### COAX CONTACTS

*Not included with 795-010 connector.  
Sold separately.*

for S/R or Flexible Coax Cable



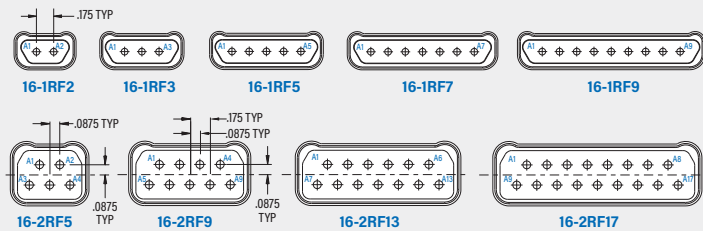
- See contacts reference page at the beginning of this section for compatible size #16 socket contacts

#### TABLE 1 ARRANGEMENT NUMBER

Optimized for Size #16 SMPS Contacts

Cable diameter: .109" Max

Max Freq: 65 GHz

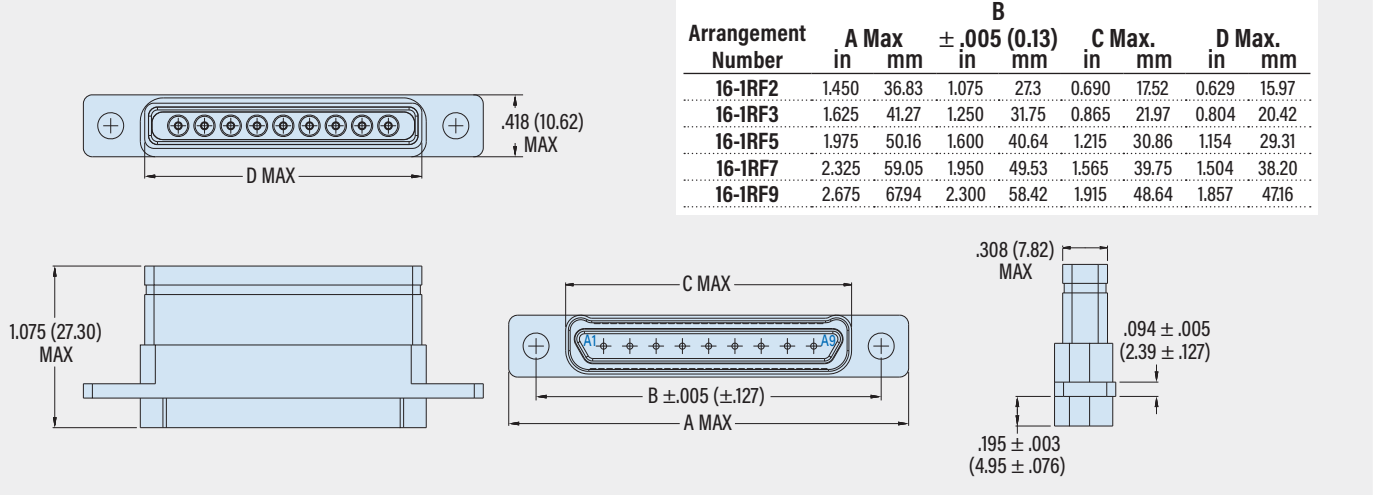


#### TABLE 2 HARDWARE OPTION

<b>L</b>	<b>K</b>	<b>S</b>	<b>T</b>	<b>P</b>	<b>N</b>
<b>Socket Head Captive Jackscrew, #6-32</b>	<b>Extended Captive Jackscrew, #6-32</b>	<b>Low-Profile Socket Head Captive Screwlock</b>	<b>Extended Captive Screwlock, Knurled Head</b>	<b>Jackpost, Nut and Lock washer, #6-32</b>	<b>No Jackscrew</b>

## 795-010P Cable Receptacle, Pin Contacts

### 795-010P SINGLE ROW



### 795-010P DUAL ROW

