

Selection Guide

GRF Hermetic Connectors in BNC, TNC, SMA, and other RF Interfaces

Hermetic GRF Connectors feature passivated stainless steel or ferrous steel shells, with glass insulators fused to the connector shell, and contacts meeting a leak rate of 1×10^{-7} cc/Helium per second.

Selection Guide

Glass Sealed Hermetics



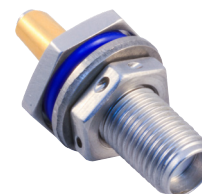
GRF05-0002
Page 98



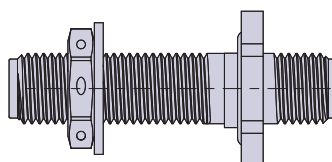
GRF05-0004
Page 99



GRF05-0005
Page 100



GRF01-0007
Page 101



GRF05-0014
Page 102

Lightweight Code Red Hermetics



GRF01-0003
Page 103