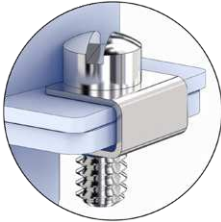


D-Subminiature

687-316

Replacement Screwlocks for Type 3 Solid Backshells (.035" Flange)

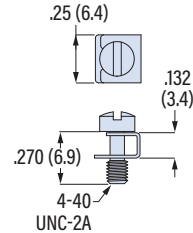
687-316 FILLISTER HEAD MALE SCREWLOCK WITH CLIP



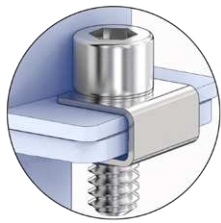
Replacement slotted fillister head male screwlock for Type 3 solid Series 557 ultra-lightweight backshells with .035 (0.9) flange. 300 Series stainless steel. Includes clip.

- Order (2) per backshell
- Fits Type 3 solid backshells with .035 (0.9) flange

PART NUMBER
687-316



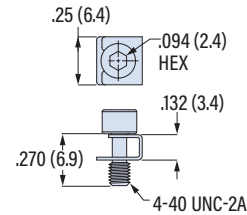
687-316M SOCKET HEAD MALE SCREWLOCK WITH CLIP



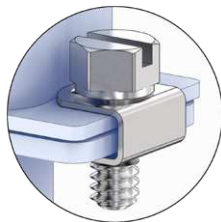
Replacement socket head male screwlock for Type 3 solid Series 557 ultra-lightweight backshells with .035 (0.9) flange. 300 Series stainless steel. Includes clip.

- Order (2) per backshell
- Fits Type 3 solid backshells with .035 (0.9) flange

PART NUMBER
687-316M



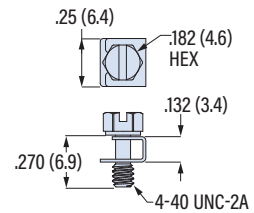
687-316H HEX HEAD MALE SCREWLOCK



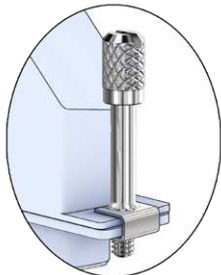
Replacement slotted hex head male screwlock for Type 3 solid Series 557 ultra-lightweight backshells with .035 (0.9) flange. 300 Series stainless steel. Includes clip.

- Order (2) per backshell
- Fits Type 3 solid backshells with .035 (0.9) flange

PART NUMBER
687-316H



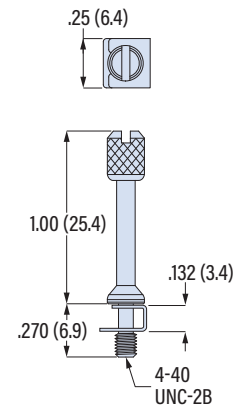
687-316E1 EXTENDED LENGTH SLOTTED MALE SCREWLOCK WITH CLIP



Replacement slotted fillister head male screwlock for Type 3 solid Series 557 ultra-lightweight backshells with .035 (0.9) flange. 300 Series stainless steel. Includes clip.

- Order (2) per backshell
- Fits Type 3 solid backshells with .035 (0.9) flange

PART NUMBER
687-316E1



D-SUBMINIATURE ACCESSORIES