

# D-Subminiature

## 557-561

### Banding Backshell, Micro Band, 45° & End Entry

- Solid Backshell, .035" Flange
- Micro Band Shield Termination
- Lightweight



**B** 45° Entry



**E** End Entry

#### 557-561

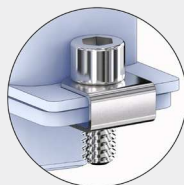
This accessory fits D-Subminiature M24308 connectors.  
Not compatible with Series 28 HiPer-D

Lightweight, one piece, Micro band. 557-561 backshell fits M24308 D-Subminiature connectors. Terminate cable shield to backshell with .12" wide Micro band strap. Available in 45° or end entry. Backshell body is aluminum, screwlocks are stainless steel.

#### TABLE 1 SCREWLOCK OPTIONS

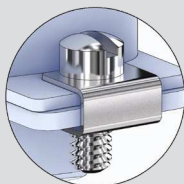
**A**

4-40 Socket Head Male Screwlocks with Clips



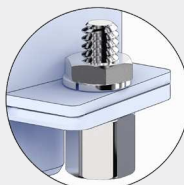
**C**

4-40 Fillister Hd. Male Screwlocks with Clips



**P**

4-40 Female Screwlocks



#### PART NUMBER

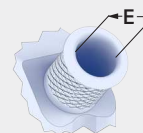
Sample PN → **557B561 M 2 04 C B**

Base P/N **557B561** **B** 45° Entry  
**557E561** **E** End Entry

Finish **TZ** Tin-Zinc  
**MN** Mega-Nickel  
**JF** Cadmium, Yel. Chromate  
**M** Electroless Nickel  
**NF** Olive Drab Cadmium  
**MT** Nickel-PTFE  
**ZR** Black Zinc-Nickel

Shell Size **1 2 3 4 5 6**

Entry Size	E	Shell Size
<b>01</b>	.125 (3.2)	1-6
<b>02</b>	.187 (4.7)	1-6
<b>03</b>	.265 (6.7)	1-6
<b>04</b>	.312 (7.9)	1-6
<b>05</b>	.390 (9.9)	1-6
<b>06</b>	.415 (10.5)	1-6
<b>07</b>	.500 (12.7)	5-6
<b>08</b>	.525 (13.3)	5-6
<b>09</b>	.570 (14.5)	6



Screwlocks (Table 1) **Omit** Thru-Holes (screwlocks not included)  
**A** Socket Head Male Screwlocks  
**C** Fillister Head Male Screwlocks  
**P** Female Screwlocks (fixed, non-rotating)

Band **Omit** No Band  
**B** Micro Band Included  
**J** Micro Slim Band Included  
**L** Micro-Max Band Included