

D-Subminiature

557-432

Low Profile Micro Band Backshell

- Solid EMI Backshell, .25" Flange
- Micro Band Shield Termination
- Qwik-Ty® Strain Relief



T Top Entry



B 45° Entry

557-432

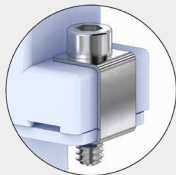
This accessory fits D-Subminiature M24308 connectors.
Not compatible with Series 28 HiPer-D

One piece, reduced can height, Micro band shield termination. 557-432 aluminum backshell fits M24308 D-Subminiature connectors. Low profile backshell has reduced can height for limited clearance equipment. Terminate cable braid to backshell with .12 wide (3.0) Micro band. Optional slot for routing individual pigtail shields. Qwik-Ty strain relief arm. Aluminum with stainless steel screws and clips.

TABLE 1 SCREWLOCK OPTIONS

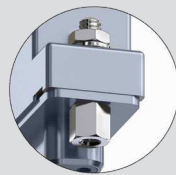
C

4-40 Socket Head Male Screwlocks with "C" Clips



P

4-40 Female Screwlocks (fixed, non-rotating)



E

4-40 Extended Length Slotted Male Screwlocks with "C" clips



PART NUMBER

| | 557T432 | M | 3 | 32 | C | K | | | | | | | | | | | | | | | | | | | | |
|--------------------------------|--|------------|------------|------------|-----------|------------|-----|-----------|------------|-----|-----------|------------|-----|-----------|------------|-----|-----------|-------------|-----|-----------|-------------|---|--|--|--|--|
| Base P/N | 557B432 B 45° Entry 557T432 T Top Entry | | | | | | | | | | | | | | | | | | | | | | | | | |
| Finish | TZ Tin-Zinc MN Mega-Nickel JF Cadmium, Yel. Chromate M Electroless Nickel NF Olive Drab Cadmium MT Nickel-PTFE ZR Black Zinc-Nickel | | | | | | | | | | | | | | | | | | | | | | | | | |
| Shell Size | 1 2 3 4 5 6 | | | | | | | | | | | | | | | | | | | | | | | | | |
| Entry Size | <table border="1"> <thead> <tr> <th>Entry Size</th> <th>Entry Dia.</th> <th>Shell Size</th> </tr> </thead> <tbody> <tr> <td>16</td> <td>.188 (4.8)</td> <td>1-6</td> </tr> <tr> <td>23</td> <td>.250 (6.4)</td> <td>1-6</td> </tr> <tr> <td>30</td> <td>.312 (7.9)</td> <td>1-6</td> </tr> <tr> <td>31</td> <td>.375 (9.5)</td> <td>1-6</td> </tr> <tr> <td>32</td> <td>.438 (11.1)</td> <td>1-6</td> </tr> <tr> <td>33</td> <td>.562 (14.3)</td> <td>6</td> </tr> </tbody> </table> | Entry Size | Entry Dia. | Shell Size | 16 | .188 (4.8) | 1-6 | 23 | .250 (6.4) | 1-6 | 30 | .312 (7.9) | 1-6 | 31 | .375 (9.5) | 1-6 | 32 | .438 (11.1) | 1-6 | 33 | .562 (14.3) | 6 | | | | |
| Entry Size | Entry Dia. | Shell Size | | | | | | | | | | | | | | | | | | | | | | | | |
| 16 | .188 (4.8) | 1-6 | | | | | | | | | | | | | | | | | | | | | | | | |
| 23 | .250 (6.4) | 1-6 | | | | | | | | | | | | | | | | | | | | | | | | |
| 30 | .312 (7.9) | 1-6 | | | | | | | | | | | | | | | | | | | | | | | | |
| 31 | .375 (9.5) | 1-6 | | | | | | | | | | | | | | | | | | | | | | | | |
| 32 | .438 (11.1) | 1-6 | | | | | | | | | | | | | | | | | | | | | | | | |
| 33 | .562 (14.3) | 6 | | | | | | | | | | | | | | | | | | | | | | | | |
| Screwlocks (Table 1) | Omit Thru-Holes (screwlocks not included) C Socket Head Male Screwlocks E Extended Male Screwlocks (T top entry only) P Female Screwlocks (fixed, non-rotating) | | | | | | | | | | | | | | | | | | | | | | | | | |
| Band | Omit No Band K Micro Band Included J Micro Slim Band Included L Micro-Max Band Included | | | | | | | | | | | | | | | | | | | | | | | | | |



BAND OPTIONS

| Band Type and Width | Hand Tool | Pneumatic Tool |
|-----------------------|----------------|----------------|
| Micro: .12 (3.0) | 601-101 | 601-107 |
| Micro Slim: .12 (3.0) | 601-122 | 601-123 |
| Micro-Max: .12 (3.0) | 601-129 | 601-130 |

Terminate braid to backshell with band strap and banding tool. Pre-coiled bands are passivated SST. Micro Slim bands: reduced thickness for weight reduction. Micro-Max bands: high-tension for lower-resistivity termination.