

D-Subminiature

557-319

Banding Backshell, 45° & End Entry

- Solid Backshell, .035" Flange
- Banding Shield Termination
- Lightweight



B 45° Entry



E End Entry

557-319

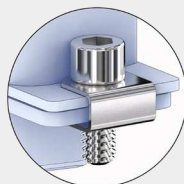
This accessory fits D-Subminiature M24308 connectors.
Not compatible with Series 28 HiPer-D

Lightweight, one piece. 557-319 backshell fits M24308 D-Subminiature connectors. Terminate cable shield to backshell with .12" wide Micro band. Available in 45° or end entry. Attach cable tie to optional Qwik-Ty strain relief arm. Backshell body is aluminum, screwlocks are stainless steel.

TABLE 1 SCREWLOCK OPTIONS

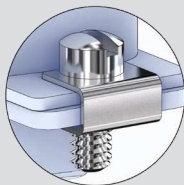
A

4-40 Socket Head Male Screwlocks with Clips



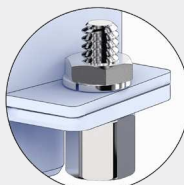
C

4-40 Fillister Hd. Male Screwlocks with Clips



P

4-40 Female Screwlocks



PART NUMBER

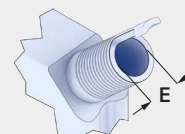
Sample PN → **557B319** **M** **2** **04** **C** **B** **-T**

Base P/N **557B319** **B** 45° Entry
557E319 **E** End Entry

Finish
TZ Tin-Zinc
MN Mega-Nickel
JF Cadmium, Yel. Chromate
M Electroless Nickel
NF Olive Drab Cadmium
MT Nickel-PTFE
ZR Black Zinc-Nickel

Shell Size **1 2 3 4 5 6**

Entry Size	Shell Size	
	E	
01	.125 (3.2)	1-6
02	.187 (4.7)	1-6
03	.265 (6.7)	1-6
04	.312 (7.9)	1-6
05	.390 (9.9)	1-6
06	.415 (10.5)	1-6
07	.500 (12.7)	5-6
08	.525 (13.3)	5-6
09	.570 (14.5)	6



Screwlocks (Table 1)
Omit Thru-Holes (screwlocks not included)
A Socket Head Male Screwlocks
C Fillister Head Male Screwlocks
P Female Screwlocks (fixed, non-rotating)

Band
Omit No Band
B Micro Band Included
J Micro Slim Band Included
L Micro-Max Band Included

Qwik-Ty
Omit No Qwik-Ty Strain Relief Arm
-T Qwik-Ty Arm Included

