

D-Subminiature



557-316

Low Profile Banding Backshell

- Solid EMI Backshell, .25" Flange
- Banding Shield Termination
- Qwik-Ty® Strain Relief



T Top Entry



S Side Entry



B 45° Entry



E End Entry

557-316

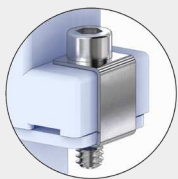
This accessory fits D-Subminiature M24308 connectors.
Not compatible with Series 28 HiPer-D

One piece, reduced height, .25 (6.4) flange. 557-316 aluminum backshell fits M24308 D-Subminiature connectors. Top entry version has reduced can height for limited clearance equipment. Terminate cable braid to backshell with .24" (6.1) wide banding strap. Optional slot for routing individual pigtail shields. Optional Qwik-Ty strain relief arm. Aluminum with stainless steel screws and clips.

TABLE 2
SCREWLOCK OPTIONS

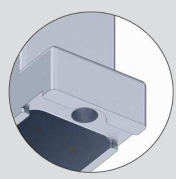
A

4-40 Socket Head Male Screwlocks with Clips



H

Thru-Holes (Screwlocks not included)



PART NUMBER

Sample PN → **557T316 M 3 32 S T K A**



Base P/N	557B316 B 45° Entry 557E316 E End Entry 557S316 S Side Entry 557T316 T Top Entry
Finish	TZ Tin-Zinc MN Mega-Nickel JF Cadmium, Yel. Chromate M Electroless Nickel NF Olive Drab Cadmium MT Nickel-PTFE ZR Black Zinc-Nickel
Shell Size	1 2 3 4 5 6
Entry Size	See Table 1
Slot	Omit No Slot S Slot (in banding area) 
Qwik-Ty	Omit No Qwik-Ty Strain Relief Arm T Qwik-Ty Arm Included 
Band	Omit No Band K Standard Band Included J Slim Standard Band Included
Screwlocks (Table 1)	Omit #4-40 Tapped Holes A Socket Head Male Screwlocks H Thru-Holes (order screwlocks separately)

TABLE 1 ENTRY SIZE

Entry Size	T B Top and 45° Entry								E S End and Side Entry				
	Shell Sizes 1-4				Shell Sizes 5-6				Shell Sizes 1-6				
	ø J		K		Shell Size	J		K		J		K	
	in	mm	in	mm		in	mm	in	mm	in	mm	in	mm
16	.188	4.8	—	—	1-4	.188	4.8	—	—	.188	4.8	—	—
23	.250	6.4	—	—	1-4	.250	6.4	—	—	.250	6.4	—	—
30	.312	7.9	—	—	1-4	.312	7.9	—	—	.312	7.9	—	—
31	.375	9.5	—	—	1-4	.375	9.5	—	—	.375	9.5	—	—
32	.438	11.1	—	—	1-4	.438	11.1	—	—	.438	11.1	—	—
33	.562	14.3	.723	18.4	2-4	.562	14.3	—	—	.562	14.3	—	—
34	.650	16.5	.967	24.6	2-4	.460	11.7	1.380	35.1	.650	16.5	—	—
35	.562	14.3	1.250	31.8	3-4	.460	11.7	1.500	38.1	—	—	—	—
36	—	—	—	—	—	—	—	—	—	.650	16.5	.967	24.9

