

D-Subminiature

557-281

Banding Backshell, Micro Band

- Solid Backshell, .035" Flange
- Micro Band Shield Termination
- Lightweight Trapezoidal

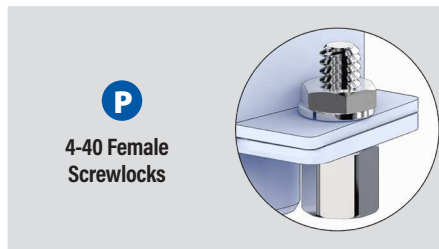
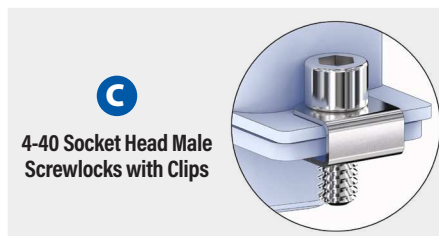


557-281

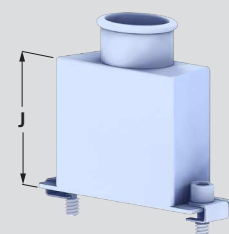
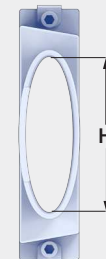
This accessory fits D-Subminiature M24308 connectors.
Not compatible with Series 28 HiPer-D

Lightweight, one piece, Micro band. 557-281 trapezoidal backshell fits M24308 D-Subminiature connectors. Terminate cable shield to backshell with .12" wide Micro band. 13 entry sizes from ½ inch to 2 inches. Available in 8 heights ranging from ½ inch to 1 ¾ inch. Backshell body is aluminum, screwlocks are stainless steel.

TABLE 1
SCREWLOCK OPTIONS



PART NUMBER																																											
Sample PN →	557-281 M 3 06 A S C J																																										
Base P/N	557-281																																										
Finish	TZ Tin-Zinc MN Mega-Nickel JF Cadmium, Yel. Chromate M Electroless Nickel NF Olive Drab Cadmium MT Nickel-PTFE ZR Black Zinc-Nickel																																										
Shell Size	1 2 3 4 5 6																																										
Entry Size	<table border="1"> <thead> <tr> <th>Entry Size</th> <th>H</th> <th>Shell Size</th> </tr> </thead> <tbody> <tr><td>04</td><td>.500 (12.7)</td><td>1-6</td></tr> <tr><td>05</td><td>.625 (15.9)</td><td>1-6</td></tr> <tr><td>06</td><td>.750 (19.1)</td><td>2-6</td></tr> <tr><td>07</td><td>.875 (22.2)</td><td>2-6</td></tr> <tr><td>08</td><td>1.000 (25.4)</td><td>2-6</td></tr> <tr><td>09</td><td>1.125 (28.6)</td><td>3-6</td></tr> <tr><td>10</td><td>1.250 (31.8)</td><td>3-6</td></tr> <tr><td>11</td><td>1.375 (34.9)</td><td>3-6</td></tr> <tr><td>12</td><td>1.500 (38.1)</td><td>3-6</td></tr> <tr><td>13</td><td>1.625 (41.3)</td><td>4-6</td></tr> <tr><td>14</td><td>1.750 (44.5)</td><td>4-6</td></tr> <tr><td>15</td><td>1.875 (47.6)</td><td>4-6</td></tr> <tr><td>16</td><td>2.000 (50.8)</td><td>4-6</td></tr> </tbody> </table>	Entry Size	H	Shell Size	04	.500 (12.7)	1-6	05	.625 (15.9)	1-6	06	.750 (19.1)	2-6	07	.875 (22.2)	2-6	08	1.000 (25.4)	2-6	09	1.125 (28.6)	3-6	10	1.250 (31.8)	3-6	11	1.375 (34.9)	3-6	12	1.500 (38.1)	3-6	13	1.625 (41.3)	4-6	14	1.750 (44.5)	4-6	15	1.875 (47.6)	4-6	16	2.000 (50.8)	4-6
Entry Size	H	Shell Size																																									
04	.500 (12.7)	1-6																																									
05	.625 (15.9)	1-6																																									
06	.750 (19.1)	2-6																																									
07	.875 (22.2)	2-6																																									
08	1.000 (25.4)	2-6																																									
09	1.125 (28.6)	3-6																																									
10	1.250 (31.8)	3-6																																									
11	1.375 (34.9)	3-6																																									
12	1.500 (38.1)	3-6																																									
13	1.625 (41.3)	4-6																																									
14	1.750 (44.5)	4-6																																									
15	1.875 (47.6)	4-6																																									
16	2.000 (50.8)	4-6																																									
Height Code	<table border="1"> <thead> <tr> <th>Code</th> <th>J</th> </tr> </thead> <tbody> <tr><td>A</td><td>.50 (12.7)</td></tr> <tr><td>B</td><td>.62 (15.8)</td></tr> <tr><td>C</td><td>.75 (19.1)</td></tr> <tr><td>D</td><td>.87 (22.1)</td></tr> <tr><td>E</td><td>1.00 (25.4)</td></tr> <tr><td>F</td><td>1.12 (28.5)</td></tr> <tr><td>G</td><td>1.25 (31.8)</td></tr> <tr><td>H</td><td>1.38 (35.1)</td></tr> </tbody> </table>	Code	J	A	.50 (12.7)	B	.62 (15.8)	C	.75 (19.1)	D	.87 (22.1)	E	1.00 (25.4)	F	1.12 (28.5)	G	1.25 (31.8)	H	1.38 (35.1)																								
Code	J																																										
A	.50 (12.7)																																										
B	.62 (15.8)																																										
C	.75 (19.1)																																										
D	.87 (22.1)																																										
E	1.00 (25.4)																																										
F	1.12 (28.5)																																										
G	1.25 (31.8)																																										
H	1.38 (35.1)																																										
Qwik-Ty	Omit No Qwik-Ty Arm S Qwik-Ty Arm Included																																										
Screwlocks (Table 1)	Omit Thru-Holes (screwlocks not included) C Socket Head Male Screwlocks P Female Screwlocks (fixed, non-rotating)																																										
Band	Omit No Band B Micro Band Included J Micro Slim Band Included L Micro-Max Band Included																																										



D-SUBMINIATURE ACCESSORIES