

# D-Subminiature

## 557-246

### Elliptical Micro Band Backshell

- Solid EMI Backshell, .25" Flange
- Micro Band Shield Termination
- Qwik-Ty Strain Relief



#### 557-246

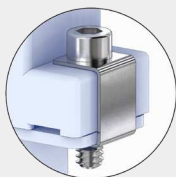
This accessory fits D-Subminiature M24308 connectors.  
Not compatible with Series 28 HiPer-D

One piece, elliptical Micro band, .25 (6.4) flange. 557-246 aluminum backshell fits M24308 D-Subminiature connectors. Terminate cable braid to backshell with .12 wide (3.0) Micro band. Optional slot for routing individual pigtail shields. Optional Qwik-Ty strain relief arm. Aluminum with stainless steel screws and clips.

**TABLE 1**  
SCREWLOCK OPTIONS

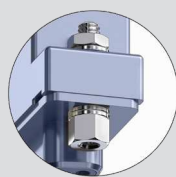
**No Designator**

4-40 Socket Head Male Screwlocks With Clips



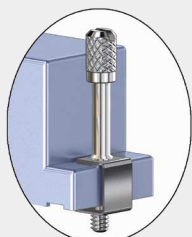
**P**

4-40 Female Screwlocks (fixed, non-rotating)



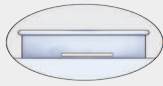

**E**

4-40 Extended Length Slotted Male Screwlocks With Clips



#### PART NUMBER

Sample PN → **557T246 M 3** **08 S T K**

<b>Base P/N</b>	<b>557T246</b> Top Entry																																										
<b>Finish</b>	<ul style="list-style-type: none"> <li><b>TZ</b> Tin-Zinc</li> <li><b>MN</b> Mega-Nickel</li> <li><b>JF</b> Cadmium, Yel. Chromate</li> <li><b>M</b> Electroless Nickel</li> <li><b>NF</b> Olive Drab Cadmium</li> <li><b>MT</b> Nickel-PTFE</li> <li><b>ZR</b> Black Zinc-Nickel</li> </ul>																																										
<b>Shell Size</b>	<b>1 2 3 4 5 6</b>																																										
<b>Screwlocks</b> (Table 1)	<ul style="list-style-type: none"> <li><b>Omit</b> Socket Head Screwlocks</li> <li><b>E</b> Extended Slotted Male Screwlock</li> <li><b>P</b> Female Screwlocks (fixed)</li> </ul>																																										
<b>Entry Size</b>	<table border="1"> <thead> <tr> <th>Entry Size</th> <th>F</th> <th>Shell Size</th> </tr> </thead> <tbody> <tr><td><b>04</b></td><td>.500 (12.7)</td><td>1-6</td></tr> <tr><td><b>05</b></td><td>.625 (15.9)</td><td>1-6</td></tr> <tr><td><b>06</b></td><td>.750 (19.1)</td><td>2-6</td></tr> <tr><td><b>07</b></td><td>.875 (22.2)</td><td>2-6</td></tr> <tr><td><b>08</b></td><td>1.000 (25.4)</td><td>2-6</td></tr> <tr><td><b>09</b></td><td>1.125 (28.6)</td><td>3-6</td></tr> <tr><td><b>10</b></td><td>1.250 (31.8)</td><td>3-6</td></tr> <tr><td><b>11</b></td><td>1.375 (34.9)</td><td>3-6</td></tr> <tr><td><b>12</b></td><td>1.500 (38.1)</td><td>3-6</td></tr> <tr><td><b>13</b></td><td>1.625 (41.3)</td><td>4-6</td></tr> <tr><td><b>14</b></td><td>1.750 (44.5)</td><td>4-6</td></tr> <tr><td><b>15</b></td><td>1.875 (47.6)</td><td>4-6</td></tr> <tr><td><b>16</b></td><td>2.000 (50.8)</td><td>4-6</td></tr> </tbody> </table>	Entry Size	F	Shell Size	<b>04</b>	.500 (12.7)	1-6	<b>05</b>	.625 (15.9)	1-6	<b>06</b>	.750 (19.1)	2-6	<b>07</b>	.875 (22.2)	2-6	<b>08</b>	1.000 (25.4)	2-6	<b>09</b>	1.125 (28.6)	3-6	<b>10</b>	1.250 (31.8)	3-6	<b>11</b>	1.375 (34.9)	3-6	<b>12</b>	1.500 (38.1)	3-6	<b>13</b>	1.625 (41.3)	4-6	<b>14</b>	1.750 (44.5)	4-6	<b>15</b>	1.875 (47.6)	4-6	<b>16</b>	2.000 (50.8)	4-6
Entry Size	F	Shell Size																																									
<b>04</b>	.500 (12.7)	1-6																																									
<b>05</b>	.625 (15.9)	1-6																																									
<b>06</b>	.750 (19.1)	2-6																																									
<b>07</b>	.875 (22.2)	2-6																																									
<b>08</b>	1.000 (25.4)	2-6																																									
<b>09</b>	1.125 (28.6)	3-6																																									
<b>10</b>	1.250 (31.8)	3-6																																									
<b>11</b>	1.375 (34.9)	3-6																																									
<b>12</b>	1.500 (38.1)	3-6																																									
<b>13</b>	1.625 (41.3)	4-6																																									
<b>14</b>	1.750 (44.5)	4-6																																									
<b>15</b>	1.875 (47.6)	4-6																																									
<b>16</b>	2.000 (50.8)	4-6																																									
<b>Slot</b>	<ul style="list-style-type: none"> <li><b>Omit</b> No Slot</li> <li><b>S</b> Slot (in banding area)</li> </ul> 																																										
<b>Qwik-Ty</b>	<ul style="list-style-type: none"> <li><b>Omit</b> No Qwik-Ty Strain Relief Arm</li> <li><b>T</b> Qwik-Ty Arm Included</li> </ul> 																																										
<b>Band</b>	<ul style="list-style-type: none"> <li><b>Omit</b> No Band</li> <li><b>K</b> Micro Band Included</li> <li><b>J</b> Micro Slim Band Included</li> <li><b>L</b> Micro-Max Band Included</li> </ul>																																										

D-SUBMINIATURE ACCESSORIES