

D-Subminiature

550-100

Shrouded Backshell, Saddle Clamp

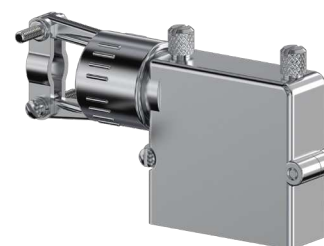
- Split Backshell
- For Unshielded Cable
- Saddle Clamp Strain Relief



T Top Entry



S Side Entry



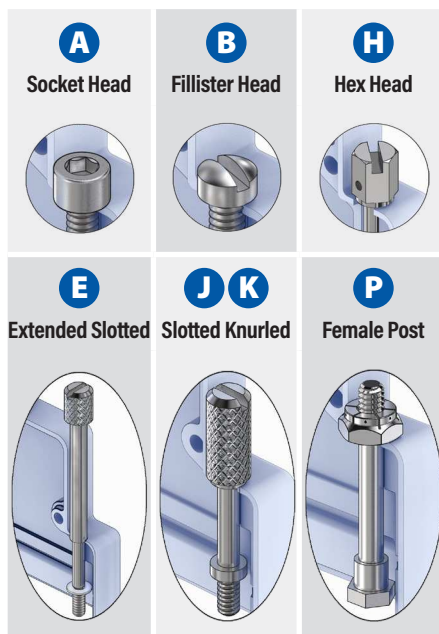
E End Entry

550-100

This accessory fits D-Subminiature M24308 connectors.
Not compatible with Series 28 HiPer-D

Saddle clamp, shrouded. 550-100 diecast aluminum backshell fits M24308 D-Subminiature connectors. Type L saddle clamp strain relief. Eleven shroud lengths to accommodate mating connector mounting dimensions. #4-40 screwlocks are included. Aluminum with stainless steel hardware.

TABLE 1
SCREWLOCK OPTIONS



PART NUMBER

		Sample PN →	550T100	M	3	R3	A
Base P/N	550T100	T Top Entry					
	550E100	E End Entry (Shell Size 1-5)					
	550S100	S Side Entry					
Finish	TZ	Tin-Zinc					
	MN	Mega-Nickel					
	JF	Cadmium, Yel. Chromate					
	M	Electroless Nickel					
	NF	Olive Drab Cadmium					
	MT	Nickel-PTFE					
	ZR	Black Zinc-Nickel					
Shell Size	1	2	3	4	5	6	
Shroud Length	Mating Connector Rear Panel Mounting						
	Code	Panel Thickness		E			
	R1	.031 (0.8)	.247 (6.3)				
	R2	.047 (1.2)	.231 (5.9)				
	R3	.062 (1.6)	.216 (5.5)				
	R4	.093 (2.4)	.185 (4.7)				
	R5	.104 (2.6)	.174 (4.4)				
	R6	.125 (3.2)	.153 (3.9)				
	R7	.156 (4.0)	.125 (3.2)				
	R8	.138 (3.5)	.140 (3.6)				
	R9	.188 (4.8)	.094 (2.4)				
CC	Cable-to-Cable	.170-.172 (4.3-4.4)					
F0	Front Panel Mount	.340-.344 (8.6-8.7)					
Screwlocks (Table 1)	Code Type		Profiles				
	A	Male, Socket Head	ST				
	B	Male, Fillister Head	ST				
	E	Male, Extended Slotted	ST				
	H	Male, Hex Head, Drilled	ST				
	J	Male, Slotted, Knurled	E				
	K	Male, Slotted, Knurled	ST				
P	Female Hex Post, Fixed	ST					

