

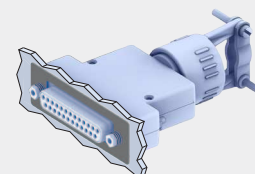
D-Subminiature

550-009

Shrouded Backshell, Rear Panel Mount

- Rear Panel Mount
- Cone-and-Ring Shield Termination
- Saddle Clamp Strain Relief

REAR PANEL MOUNTING



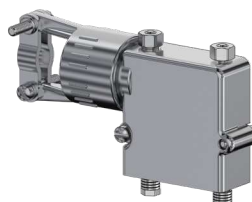
FOR REAR-MOUNTED CONNECTORS ONLY
BACKSHELL ATTACHES TO INSIDE OF PANEL WITH FEMALE SCREWLOCKS (INCLUDED).



T Top Entry



S Side Entry



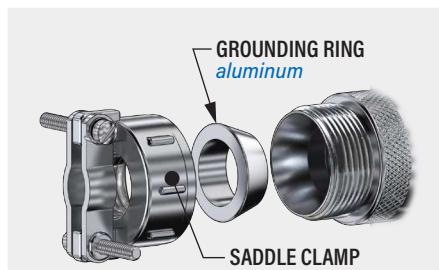
E End Entry

550-009

This accessory fits D-Subminiature M24308 connectors.
Not compatible with Series 28 HiPer-D

For rear panel mounted connectors, Cone-and-Ring shield termination. 550-009 diecast aluminum backshell fits rear panel mounted M24308 D-Subminiature connectors. EMI protected. Cable shield attaches to backshell with ground ring. For panel thicknesses up to 3/16 inch (4.8mm). Optional metalastic EMI panel gasket. Connector fits into groove between backshell halves. #4-40 female screwlocks are included. Aluminum with stainless steel screws and washers.

CONE-AND-RING SHIELD TERMINATION



Fold braid over grounding ring. Tighten clamp onto backshell to captivate braid.

PART NUMBER

Sample PN → **550T009 M 3 R3 L 0**

Base P/N	Base Part No.	Profile
	550T009	T Top Entry
	550E009	E End Entry
	550S009	S Side Entry

Finish	Code	Material
	TZ	Tin-Zinc
	MN	Mega-Nickel
	JF	Cadmium, Yel. Chromate
	M	Electroless Nickel
	NF	Olive Drab Cadmium
	MT	Nickel-PTFE
	ZR	Black Zinc-Nickel

Shell Size	Code
1	1
2	2
3	3
4	4
5	5
6	6

Panel Thickness	Code	Panel Thickness
	R1	.031 (0.8)
	R2	.047 (1.2)
	R3	.062 (1.6)
	R4	.093 (2.4)
	R5	.104 (2.6)
	R6	.125 (3.2)
	R7	.156 (4.0)
	R8	.135 (3.4)
	R9	.188 (4.8)

Strain Relief	Code	Material
	L	Saddle Clamp
	G	Gland Nut

EMI Gasket	Code	Description
	0	No Gasket
	1	Gasket Included (install on mating connector)