

Backshells and Accessories

480-006 Mounting Device, Flange Type For Series 970 PowerTrip

BACKSHELLS AND ACCESSORIES

480-006 FLANGE



Mounting Flange

Mounting device, flange type eliminate loose lockwashers and nuts for faster installation time and prevention of dropped hardware in hard-to-reach areas. Three finishes are available: gold iridite (Code E), iridite clear, Rohs compliant (ER) or epoxy primer (EAP). Passivated stainless steel clinch nuts with dry film lube, 6061 aluminum alloy plate.

HOW TO ORDER				
Sample Part Number →		480-006	E	36
Basic Number	480-006 = Mounting Device, Flange for Series 970			
Finish	E = Gold Iridite ER = Iridite Clear, ROHS Compliant EAP = Polyamide Primer Per MIL-PRF-23377			
Shell Size	18, 20, 24, 28, 32, 36, 40			

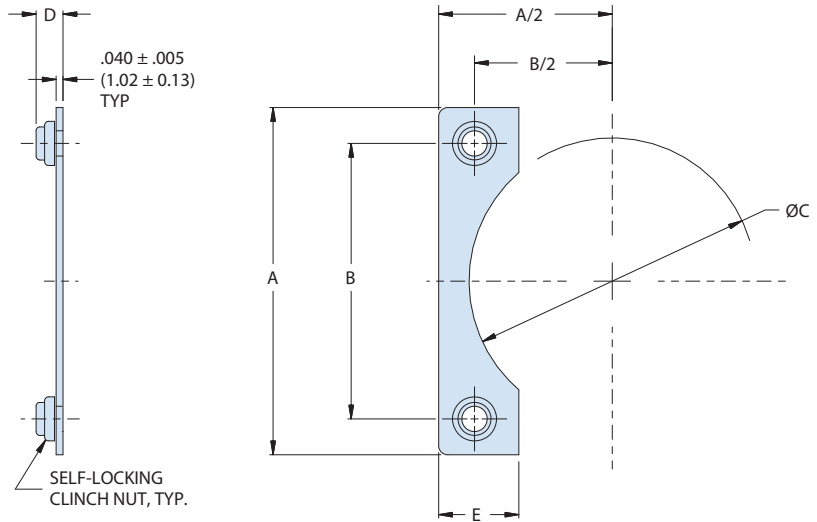


TABLE I: DIMENSIONS											
Shell Size	A		B *.003		ø C ± .005 (0.1)		D ± .030		E		Thread Size UNC
	in	mm	in	mm	in	mm	in	mm	in	mm	
18	1.403	35.64	1.015	25.78	.950	24.13	.153	3.89	.388	9.86	6-32
20	1.528	38.81	1.140	28.96	1.095	27.81	.153	3.89	.388	9.86	6-32
24	1.738	44.15	1.281	32.54	1.280	32.51	.153	3.89	.457	11.61	6-32
28	2.158	54.81	1.568	39.83	1.580	40.13	.168	4.27	.590	14.99	8-32
32	2.343	59.51	1.734	44.04	1.840	46.74	.168	4.27	.609	15.47	8-32
36	2.598	65.99	1.984	50.39	2.090	53.09	.168	4.27	.614	15.60	8-32
40	2.848	72.34	2.234	56.74	2.340	59.44	.168	4.27	.614	15.60	8-32