

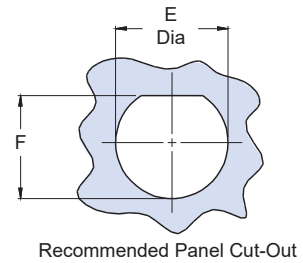
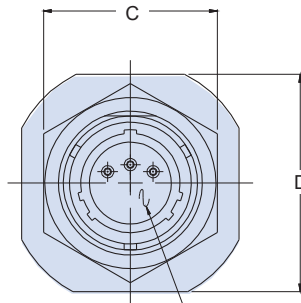
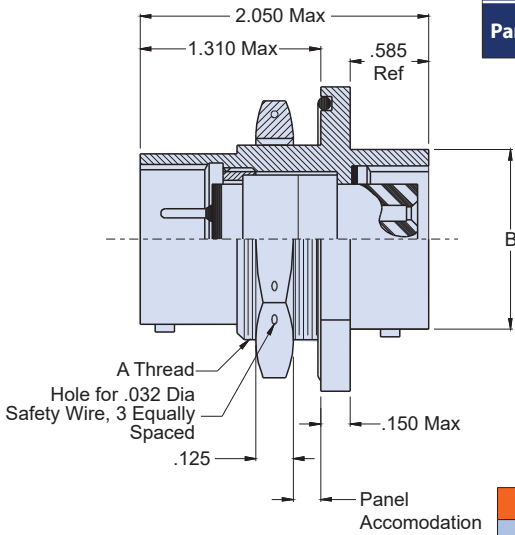
# ENVIRONMENTAL CONNECTORS MIL-DTL-38999 Series I Type



## 231-104-07 Jam nut environmental bulkhead feed-thru

BULKHEAD FEED-THRU

HOW TO ORDER	
<b>Sample Part Number</b>	<b>231-104 -07 M 11 -35 P N -01</b>
<b>Basic Part Number</b>	<b>231-104</b> Environmental Bulkhead Feed-Thru
<b>Shell Style</b>	<b>-07</b> = Jam Nut Mount
<b>Material / Finish</b>	<b>M</b> = Aluminum / Electroless Nickel <b>NC</b> = Aluminum / Zinc-Cobalt <b>NF</b> = Cad / O.D. Over Electroless Nickel (1000hr Salt Spray) <b>ZN</b> = Aluminum Zinc-Nickel Olive Drab <b>MT</b> = Aluminum / Ni-PTFE 1000 Hour Grey™ <b>AL</b> = Aluminum / Pure Electrodeposited Aluminum <b>TZ</b> = Aluminum / Tin Zinc <b>MN</b> = Aluminum / Mega Nickel
<b>Shell Size</b>	<b>09, 11, 13, 15, 17, 19, 21, 23, 25</b>
<b>Insert Arrangement</b>	Per MIL-DTL-38999 Series I MIL-STD-1560
<b>Contact Termination</b>	<b>P</b> = Pin on Flange Side <b>S</b> = Socket on Flange Side <b>PP</b> = Pin to pin <b>SS</b> = Socket to Socket
<b>Alternate Key Position</b>	<b>A, B, C, D, N</b> = Normal
<b>Panel Accomodation</b>	<b>-01</b> = .0625" (Min) .125" (Max) <b>-02</b> = .0625" (Min) .250" (Max) <b>-03</b> = .0625" (Min) .500" (Max)



### NOTES

- Power to a given contact on one end will result in power to contact directly opposite regardless of identification letter
- Material/finish:  
Shell, locking, jam nut—Al alloy, See Table II Page 5  
Contacts—Copper alloy/gold plate  
Insulators—High grade rigid dielectric/N.A.  
Bayonet Pins—CRES/passivate  
Seals—silicone/N.A.

TABLE I: CONNECTOR DIMENSIONS

SHELL SIZE	A THREAD CLASS 2A	B DIA MAX	C HEX	D FLATS	E DIA ±.005(0.1)	F ±.005(.01) unless indicated otherwise
09	.688-24 UNEF	.573(14.6)	.875(22.2)	1.062(27.0)	.698 (17.73)	.661 (16.79) .655 (16.64)
11	.813-20 UNEF	.701(17.8)	1.000(25.4)	1.250(31.8)	.830 (21.08)	.766 (19.46)
13	1.000-20 UNEF	.851(21.6)	1.188(30.2)	1.375(34.9)	1.015 (26.03)	.950 (24.13)
15	1.125-18 UNEF	.976(24.8)	1.312(33.3)	1.500(38.1)	1.140 (28.96)	1.080 (27.43)
17	1.250-18 UNEF	1.101(28.0)	1.438(36.5)	1.625(41.3)	1.265 (32.13)	1.205 (30.61)
19	1.375-18 UNEF	1.208(30.7)	1.562(39.7)	1.812(46.0)	1.390 (35.31)	1.330 (33.78)
21	1.500-18 UNEF	1.333(33.9)	1.688(42.9)	1.938(49.2)	1.515 (38.48)	1.455 (36.96)
23	1.625-18 UNEF	1.458(37.0)	1.812(46.0)	2.062(52.4)	1.640 (41.66)	1.580 (40.13)
25	1.750-18 UNS	1.583(40.2)	2.000(50.8)	2.188(55.6)	1.765 (45.08)	1.705 (43.31)