

SERIES 80 MIGHTY MOUSE CONNECTORS Accessories, Backshells, and Tools



Series 800, 801, 803, 804, 805 Rotatable Coupling with EMI Ring, Non-Environmental



380MS141

NOTES

- Material/Finish
 - Adapter, coupling nut, rear nut: aluminum alloy/per part number development
 - Saddle: stainless steel/per part number development
 - Hardware: stainless steel/passivated

The Series 80 Mighty Mouse, non-environmental backshell features a rotatable coupling nut and utilizes an EMI ring for easy shield termination. Secondary shell and integral clamp threads on over EMI ring and compresses ring to secure cable shield while providing robust cable strain-relief and protecting cable shield termination. Clamp design minimizes protrusions and reduces snagging hazards. For use with Series 800, 801, 803, 804, and 805 connectors

How To Order					
Sample Part Number	380MS141	M	08	06	-4
Series	380MS141 = Straight Entry				
Shell Material and Finish	See Table II				
Size Code (See Table II)	05, 06, 11, 07, 08, 09, 10, 12, 13, 14, 16, 17				
Cable Entry Code (Table III)	02, 25, 03, 35, 04, 05, 06, 07, 08, 09, 10, 11, 12, 13, 14, 15, 16				
Length	Specify length in 1/8 inch increments (e.g. 6 = .75 inches). Minimum length .50 inches				

Table I: Material/Finish	
Sym	Description
UCR	Aluminum / Zinc-Cobalt Black
M	Aluminum / Electroless Nickel
NF	Aluminum / Cadmium with Olive Drab
ZN	Aluminum / Zinc-Nickel with Olive Drab Chromate
ZNU	Aluminum / Zinc-Nickel with Black Chromate
MT	Aluminum / Nickel-PTFE
Z1	Stainless Steel / Passivated

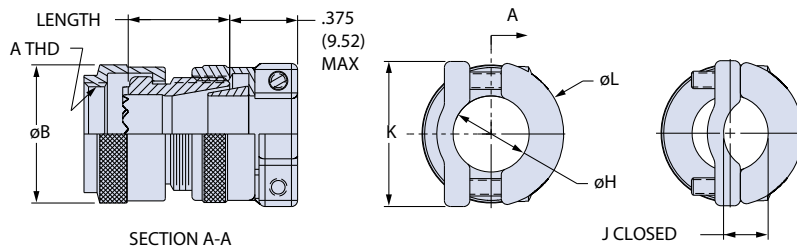


Table II: Size Code								
Size Code	Shell Size					A Thread UNEF-2B	ø B Max	Max Entry
	800	801	803	804	805			
05	5	5	5	5	-	.2500-32	0.470 (11.94)	25
06	6	6	6	6	-	.3125-32	0.530 (13.46)	35
11	-	-	-	-	8	.3750-32	0.570 (14.48)	4
07	7	7	7	7	9	.4375-28	0.637 (16.18)	5
08	8	8	8	8	10	.5000-28	0.700 (17.78)	6
09	9	9	9	9	11	.5625-24	0.758 (19.25)	7
10	10	10	10	10	12	.6250-24	0.819 (20.80)	8
12	12	13	12	12	-	.6875-24	0.896 (22.76)	9
13	-	-	-	-	15	.7500-20	0.930 (23.62)	10
14	-	16,17	14,15	14,15	18,19	.9375-20	1.137 (28.88)	13
16	-	19	-	-	21	1.0625-18	1.250 (31.75)	14
17	-	21	-	-	23	1.1875-18	1.397 (35.48)	16

Table III: Cable Entry Code					
Entry Code	ø H	J Closed	K	ø L Max	M Max
02	.125 (3.18)	.075 (1.90)	.470 (11.94)	.470 (11.94)	.375 (9.52)
25	.156 (3.96)	.094 (2.39)	.470 (11.94)	.470 (11.94)	.375 (9.52)
03	.188 (4.78)	.113 (2.87)	.530 (13.46)	.530 (13.46)	.375 (9.52)
35	.219 (5.56)	.131 (3.33)	.530 (13.46)	.530 (13.46)	.375 (9.52)
04	.250 (6.35)	.150 (3.81)	.590 (14.99)	.590 (14.99)	.375 (9.52)
05	.313 (7.95)	.188 (4.78)	.655 (16.64)	.655 (16.64)	.375 (9.52)
06	.375 (9.52)	.225 (5.72)	.715 (18.16)	.715 (18.16)	.375 (9.52)
07	.438 (11.13)	.263 (6.68)	.780 (19.81)	.780 (19.81)	.375 (9.52)
08	.500 (12.70)	.300 (7.62)	.840 (21.34)	.840 (21.34)	.375 (9.52)
09	.563 (14.30)	.375 (9.52)	.995 (25.27)	.995 (25.27)	.375 (9.52)
10	.625 (15.88)	.417 (10.59)	1.055 (26.80)	1.055 (26.80)	.445 (11.30)
11	.688 (17.48)	.459 (11.66)	1.120 (28.45)	1.120 (28.45)	.445 (11.30)
12	.750 (19.05)	.500 (12.70)	1.180 (29.97)	1.180 (29.97)	.445 (11.30)
13	.813 (20.65)	.542 (13.77)	1.245 (31.62)	1.245 (31.62)	.445 (11.30)
14	.875 (22.23)	.583 (14.81)	1.305 (33.15)	1.305 (33.15)	.445 (11.30)
15	.938 (23.83)	.625 (15.88)	1.370 (34.80)	1.370 (34.80)	.445 (11.30)
16	1.000 (25.40)	.667 (16.94)	1.430 (36.32)	1.430 (36.32)	.445 (11.30)