

### Reference and Technical Data

[Introduction to Combo HiPer-D Connectors](#)

[Page B-2](#)

[Contact Arrangements](#)

[Page B-3](#)

[Materials and Finishes](#)

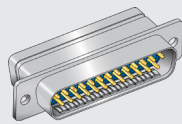
[Page B-4](#)

[Performance Specifications](#)

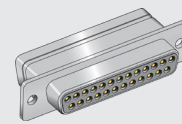
[Page B-5](#)

### Crimp Termination - for Attaching Wires

**Inline or Panel Mount**

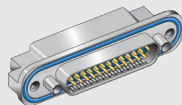


**280-018**  
Page B-6

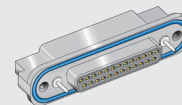


**280-019 Socket**  
Page B-8

**Rear Panel Mount**

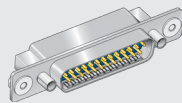


**280-020 Pin**  
Page B-10

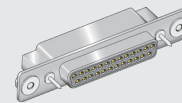


**280-021 Socket**  
Page B-12

**Float Mount**



**280-030 Pin**  
Page B-14



**280-031 Socket**  
Page B-16

**Integral Banding Platform**



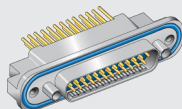
**280-107 Pin**  
Page B-18



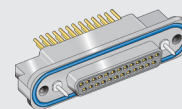
**280-108 Socket**  
Page B-20

### PC Board - with Panel O-Ring

**Straight PCB**

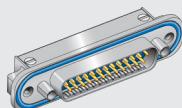


**280-022 Pin**  
Page B-22

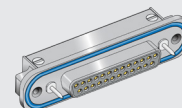


**280-023 Socket**  
Page B-24

**Right Angle PCB**



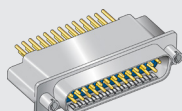
**280-024 Pin**  
Page B-26



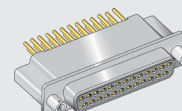
**280-025 Socket**  
Page B-28

### PC Board - with Low Profile Flange

**Straight PCB**

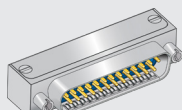


**280-026 Pin**  
Page B-30

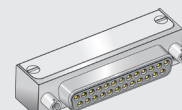


**280-027 Socket**  
Page B-32

**Right Angle PCB**



**280-028 Pin**  
Page B-34



**280-029 Socket**  
Page B-36