

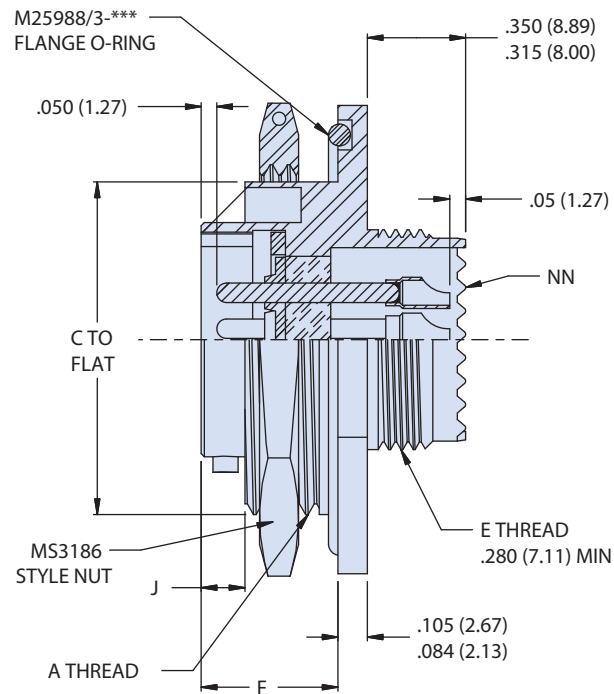
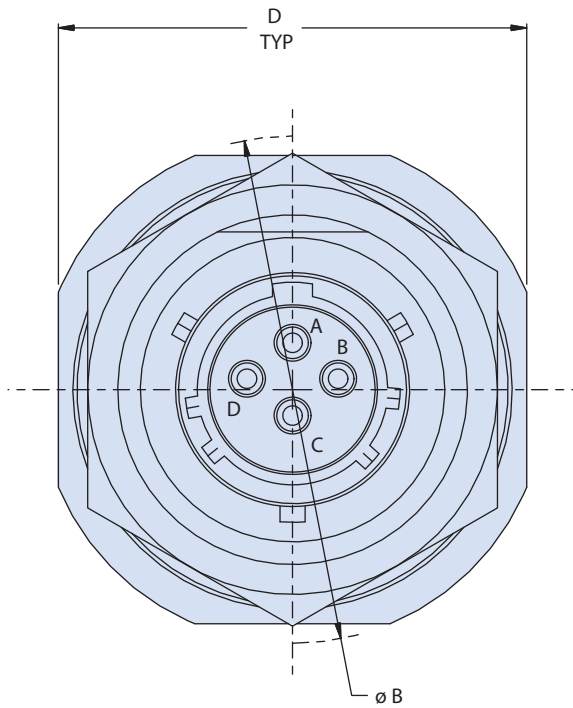
HERMETIC CONNECTORS MIL-DTL-38999 Series II Type



232-101-H7 Jam-Nut Mount Receptacle



| HOW TO ORDER: COMMERCIAL | | | | | | | |
|-------------------------------|--|------------|-----------|-----------|------------|----------|----------|
| Sample Part Number | 232-101 | -H7 | Z1 | 12 | -04 | P | N |
| Basic Part Number | 232-101 = Jam-Nut Mount Hermetic Receptacle | | | | | | |
| Shell Style | H7 = Jam-Nut Mount | | | | | | |
| Material / Finish | ZL = CRES, Nickel Z1 = CRES, Passivated FT = Carbon Steel, Fused Tin | | | | | | |
| Shell Size | 08, 10, 12, 14, 16, 18, 20, 22, 24 | | | | | | |
| Insert Arrangement | Per MIL-STD-1560 | | | | | | |
| Contact Termination | P = Pin, Solder Cup S = Socket, Solder Cup | | | | | | |
| Alternate Key Position | A, B, C, D (N = Normal) | | | | | | |



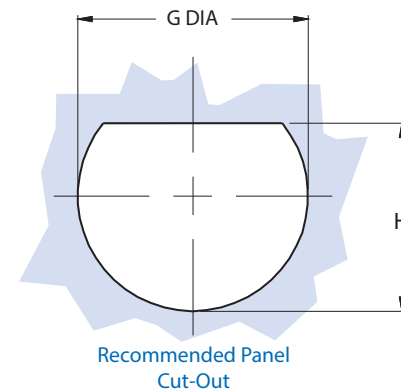
HERMETIC CONNECTORS MIL-DTL-38999 Series II Type



232-101-H7 Jam-Nut Mount Receptacle

| WIRE ACCOMODATION | |
|-------------------|------------|
| Contact Size | Wire Guage |
| 22D | #22 - #28 |
| 20 | #20 - #24 |
| 16 | #16 - #20 |
| 12 | #12 - #14 |

| HERMETIC LEAK RATE MOD CODES | |
|------------------------------|--|
| Designator | Required Leak Rate |
| -585A | 1×10^{-10} cc Helium per second |
| -585B | 1×10^{-9} cc Helium per second |
| -585C | 1×10^{-8} cc Helium per second |



| TABLE III: DWV VOLTAGE LEVELS | |
|-------------------------------|---------------------|
| SERVICE RATING | VOLTAGE AC RMS 60HZ |
| M | 1300 VAC |
| I | 1800 VAC |
| II | 2300 VAC |
| N | 1000 VAC |

| TABLE I | | | | | | | | | | |
|------------|-------------------|---------------|---------------|---------------|------------------|---------------|---------------|---------------|--------------|----------|
| SHELL SIZE | A THREAD CLASS 2A | B DIA | C FLAT | D A/F | E THREAD 0.100 R | F | G DIA | H | J | NN TEETH |
| 8 | .875-20 UNEF | 1.391 (35.33) | 0.818 (20.78) | 1.266 (32.16) | M12 x 1.0-6g | 0.443 (11.25) | 0.895 (22.73) | 0.830 (21.08) | 0.145 (3.68) | 12 |
| | | 1.359 (34.52) | 0.811 (20.60) | 1.234 (31.34) | | 0.433 (11.00) | 0.885 (22.48) | 0.820 (20.83) | 0.140 (3.56) | |
| 10 | 1.000-20 UNEF | 1.516 (38.51) | 0.942 (23.93) | 1.391 (35.33) | M15 x 1.0-6g | 0.443 (11.25) | 1.020 (25.91) | 0.955 (24.26) | 0.145 (3.68) | 16 |
| | | 1.484 (37.69) | 0.935 (23.75) | 1.359 (34.52) | | 0.433 (11.00) | 1.010 (25.65) | 0.945 (24.00) | 0.140 (3.56) | |
| 12 | 1.125-18 UNEF | 1.641 (41.68) | 1.066 (27.08) | 1.516 (38.51) | M18 x 1.0-6g | 0.443 (11.25) | 1.145 (29.08) | 1.085 (27.56) | 0.145 (3.68) | 20 |
| | | 1.609 (40.87) | 1.059 (26.90) | 1.484 (37.69) | | 0.433 (11.00) | 1.135 (28.83) | 1.075 (27.30) | 0.140 (3.56) | |
| 14 | 1.250-18 UNEF | 1.766 (44.86) | 1.191 (30.25) | 1.641 (41.68) | M22 x 1.0-6g | 0.443 (11.25) | 1.270 (32.26) | 1.210 (30.73) | 0.145 (3.68) | 24 |
| | | 1.734 (44.04) | 1.184 (30.07) | 1.609 (40.87) | | 0.433 (11.00) | 1.260 (32.00) | 1.200 (30.48) | 0.140 (3.56) | |
| 16 | 1.375-18 UNEF | 1.954 (49.63) | 1.321 (33.55) | 1.797 (45.64) | M25 x 1.0-6g | 0.443 (11.25) | 1.395 (35.43) | 1.335 (33.91) | 0.145 (3.68) | 28 |
| | | 1.922 (48.82) | 1.314 (33.38) | 1.765 (44.83) | | 0.433 (11.00) | 1.385 (35.18) | 1.325 (33.65) | 0.140 (3.56) | |
| 18 | 1.500-18 UNEF | 2.032 (51.61) | 1.441 (36.60) | 1.906 (48.41) | M28 x 1.0-6g | 0.443 (11.25) | 1.520 (38.61) | 1.460 (37.08) | 0.145 (3.68) | 32 |
| | | 2.000 (50.80) | 1.434 (36.42) | 1.874 (47.60) | | 0.433 (11.00) | 1.510 (38.35) | 1.450 (36.83) | 0.140 (3.56) | |
| 20 | 1.625-18 UNEF | 2.157 (54.79) | 1.566 (39.78) | 2.032 (51.61) | M31 x 1.0-6g | 0.469 (11.91) | 1.645 (41.78) | 1.585 (40.26) | 0.171 (4.34) | 36 |
| | | 2.125 (53.97) | 1.559 (39.60) | 2.000 (50.80) | | 0.459 (11.66) | 1.635 (41.53) | 1.575 (40.00) | 0.166 (4.22) | |
| 22 | 1.750-18 UNS | 2.281 (57.94) | 1.691 (42.95) | 2.156 (54.76) | M34 x 1.0-6g | 0.469 (11.91) | 1.770 (44.96) | 1.709 (43.41) | 0.171 (4.34) | 40 |
| | | 2.249 (57.12) | 1.684 (42.77) | 2.124 (53.95) | | 0.459 (11.66) | 1.760 (44.70) | 1.699 (43.15) | 0.166 (4.22) | |
| 24 | 1.875-16 UN | 2.406 (61.11) | 1.816 (46.13) | 2.281 (57.94) | M37 x 1.0-6g | 0.469 (11.91) | 1.895 (48.13) | 1.835 (46.61) | 0.171 (4.34) | 44 |
| | | 2.374 (60.30) | 1.809 (45.95) | 2.249 (57.12) | | 0.459 (11.66) | 1.885 (47.88) | 1.825 (46.36) | 0.166 (4.22) | |