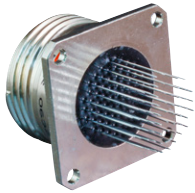
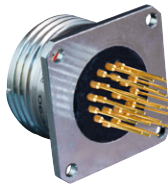


Circular PC-tail connectors  
potted, sealed, and conformal-coating compatible

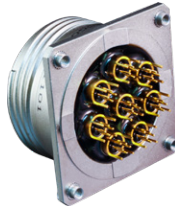
SUPERNINE® D38999 SERIES III ENVIRONMENTAL PCB CONNECTORS



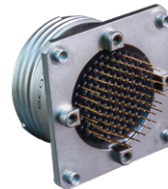
**233-207**  
flush-flange receptacle



**233-208**  
stepped contact receptacle



**233-209**  
short standoff receptacle



**233-210**  
threaded standoff receptacle

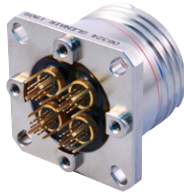


**233-211**  
dual flange receptacle

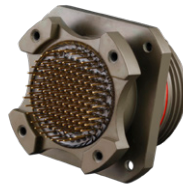
SUPERNINE® D38999 SERIES III ENVIRONMENTAL PCB SPECIALS



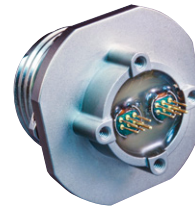
**233-218**  
high-speed hybrid  
with threaded standoffs



**233-218**  
high-speed wall mount  
with El Ochito® contacts



**240-383D**  
dual-flange wall-mount  
EMI filter connector

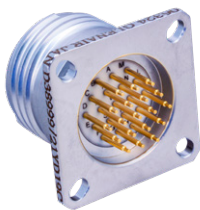


**050-335**  
opto-electronic jam nut  
with threaded standoff



**257-859**  
PCB receptacle with  
compliant pin contacts

SUPERNINE® D38999 SERIES III GLASS- AND LIGHTWEIGHT ENCAPSULANT-SEALED PCB HERMETICS



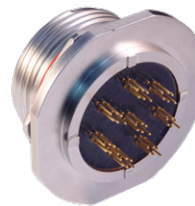
**233-100-H2**  
box mount receptacle



**233-100-H5**  
solder mount receptacle



**233-100-H7**  
jam nut mount receptacle

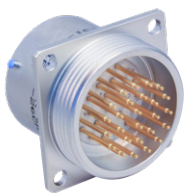


**233-254**  
high-speed hermetic  
jam nut receptacle

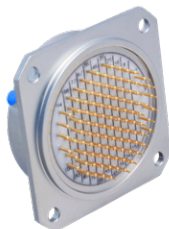


**233-250**  
CODE-RED lightweight  
hermetic jam nut receptacle

MIL-DTL-38999 SERIES I, II, III, AND IV QPL GLASS-SEALED PCB CONNECTORS—CLASS N, Y, AND H (SPACE-GRADE) HERMETIC



**231-100-H0, H7, H5**  
Series I scoop-proof bayonet



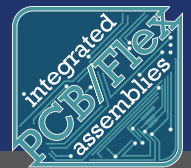
**232-100-H0, H2, H5, H7**  
Series II low-profile bayonet



**233-100-H2, H5, H7, H8**  
Series III triple-start



**234-100-H2, H7, H5, H8**  
Series IV scoop-proof breech-lock



## Circular PC-tail connectors potted, sealed, and conformal-coating compatible

### SERIES 80 MIGHTY MOUSE MICRO MINIATURE ENVIRONMENTAL PCB CONNECTORS



**Series 800**  
UN thread



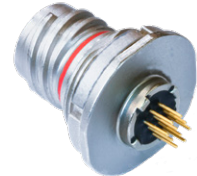
**Series 801**  
double-start thread



**Series 803**  
bayonet-lock

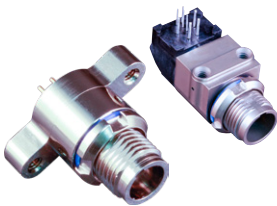


**Series 804**  
push-pull QDC

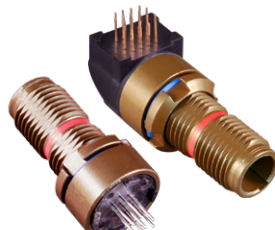


**Series 805**  
triple-start

### SERIES 88 SUPERFLY AND M32139-TYPE NANOMINIATURE CIRCULAR ENVIRONMENTAL PCB CONNECTORS



**SuperFly**  
880-041R • 880-037R  
QDC vertical and 90° receptacle



**SuperFly**  
881-019R • 881-020R  
threaded vertical and 90° receptacle



**Nanominiature**  
893-008 • 893-009  
breakaway and threaded straight



**Nanominiature**  
893-010 • 893-011  
breakaway and threaded right-angle

### SERIES 806 MIL-AERO MICRO MINIATURE ENVIRONMENTAL PCB CONNECTORS



**806-021 • 806-022**  
Environmental



**806-058**  
High-frequency coax



**806-039 • 806-040**  
High-speed E1 Ochito



**240-806-21**  
EMI/RFI filter



**806-025, -026 glass**  
**806-028, -043 lightweight**  
Hermetic

### SUPERSEAL RJ45 / USB ENVIRONMENTAL PCB CONNECTORS



**MIL-DTL-38999 Sr. III**  
SuperSeal



**Series 80 Mighty Mouse**  
SuperSeal



**Series IPT 26482 type**  
SuperSeal



**Series ITS 5015 type**  
SuperSeal



**MIL-DTL-28840**  
SuperSeal