

181-052  
Size 16 Fiber Optic Jewel Pin Terminus  
MIL-DTL-38999 Series III Type

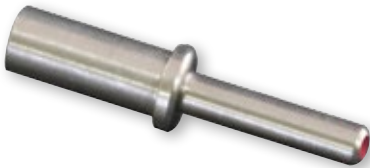


MIL-DTL-38999  
Series III Type



**MIL-DTL-38999 type fiber optic jewel pin terminus**

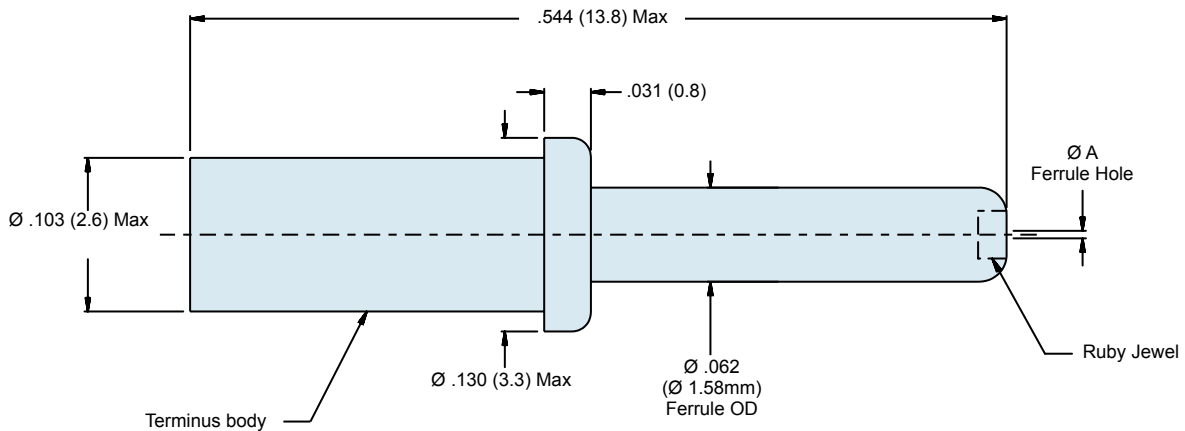
**B**



Terminus Accessories	
Part Number	Terminus Accessory
189-070-6	Reducing Sleeve, Ø1.90mm Max Cable Jacket
181-052-E	Epoxy Preforms

Part Number	Ferrule Hole Ø A (Microns)	Typical Fiber Size Core/Cladding/Coating (Microns)
181-052-125	125.0	9/125 (Singlemode)
181-052-127	127.0	50/125, 62.5/125
181-052-142	142.0	100/140
181-052-157	157.0	62.5/125/155
181-052-175	175.0	100/140/172
181-052-236	236.0	200/230

Add **L** to the end of part number development to supply less epoxy preforms e.g. 181-052-127L. Omit to include preforms.



**Material and Finish**

Terminus Body: Stainless steel/passivate  
Jewel, Ruby: Synthetic ruby or sapphire

**Notes**

Recommended insertion/extraction tool: M81969/14-03 or equivalent