

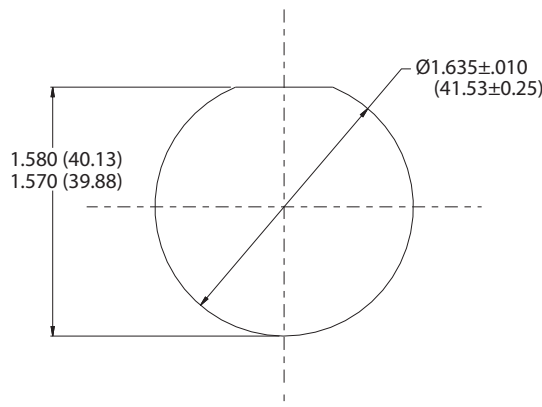
Pierside Fiber Optic Connectors IAW NAVSEA 737971 / 737972
180-158 (08) (13) jam nut receptacles

NAVSEA / Underwater Fiber Optics

HOW TO ORDER	
Sample Part Number	180-158 G2 08 -12 E 2 F 1 A
Basic Number	Pierside Fiber Optic jam nut receptacle
Material/Finish Code	NF = Aluminum Alloy / Cad, Olive Drab
Connector Type	08 = jam nut receptacle 13 = jam nut receptacle, extended
Number Of Connector Channels	12
Sleeve Retention	N = Normal E = Enhanced
Insert Material/Finish Dash No.	2 = Aluminum alloy, electroless nickel
Dust Cover Dash Sym	F = Female N = None
O-Ring Seal Material	1 = Fluorosilicone, conductive
Cable Diameter Range for Extended Receptacle	A = .200-.350 (5.08- 8.89) B = .280-.470 (7.11-11.94) C = .350-.630 (8.89-16.00) Omit for 08 non-backshell version

MATERIAL AND FINISH

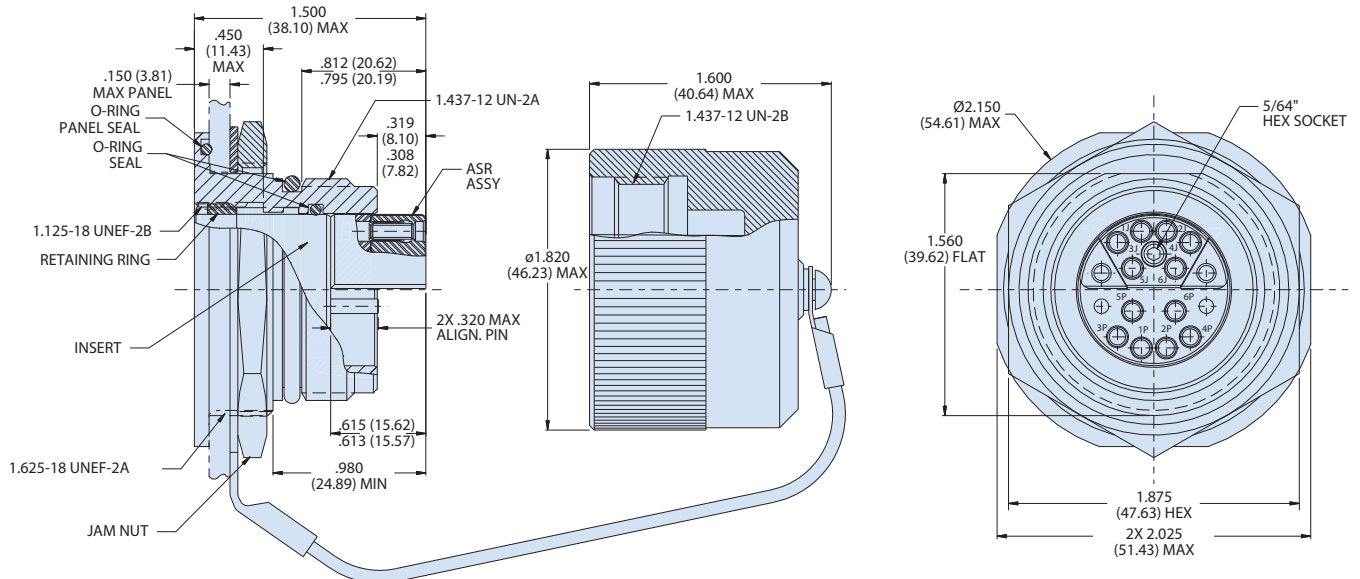
- Jan Nut: Stainless steel / passivate
- Internal hardware: Al alloy/chem film
- Misc. Hardware: stainless steel/ passivate
- Alignment sleeves: zirconia ceramic
- Sleeve retainers: BeCu alloy/ nickel
- Lanyard: stainless steel/coated
- Cable bend restrictor: nylon



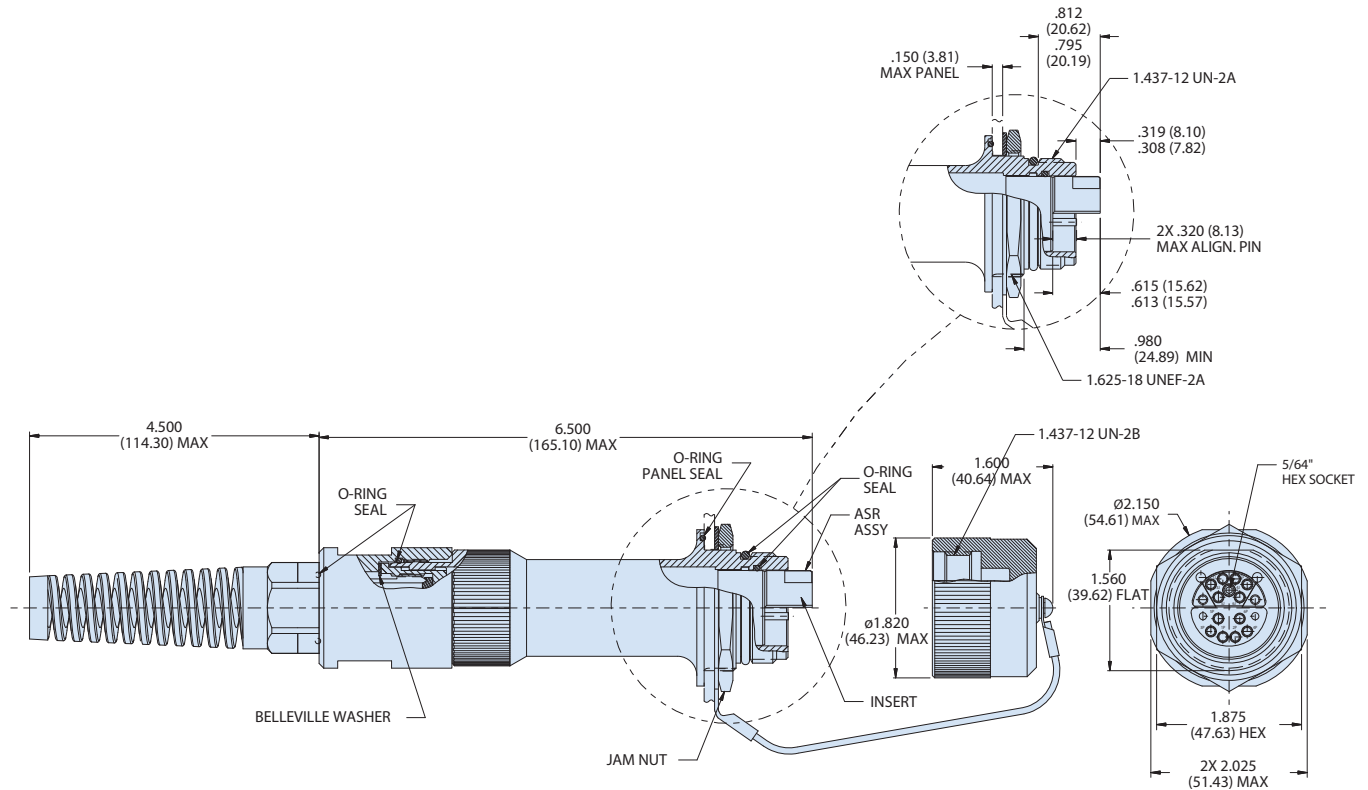
Recommended Panel Cutout

Pierside Fiber Optic Connectors IAW NAVSEA 737971 / 737972
 180-158 (08) (13) jam nut receptacles

NAVSEA / Underwater Fiber Optics



08 - Jam Nut Receptacle



13 - Jam Nut Receptacle, Extended