

# MICRO-CRIMP RECTANGULAR CONNECTORS

## Series 792 High-Speed



### Series 792 Features

#### Series 792

The Series 792 connector is a high reliability aerospace-grade rectangular connector optimized for use with twinax, quadrax or *El Ochito*® octaxial contacts. Contact cavities have precision keyways for trouble-free contact alignment. The tight-tolerance scoop-proof shell provides robust polarization. Pin contacts are recessed to prevent scooping damage. Contact arrangements include combo layouts with up to 42 size 23 contacts.

#### Contact Types

Differential Twinax  
Quadrax  
Quadrax PCB  
El Ochito  
El Ochito PCB  
Coax  
Power



#### Connector Types

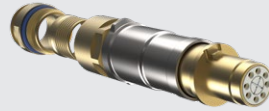
##### Crimp, Rear Release

792 crimp connectors have retention clips in contact cavities. Wired contacts snap into connector bodies and are removable. Size 8 contacts are not included with connector and are ordered separately. Size 23 contacts are included with connector.

##### PCB Termination

792 connectors are available in straight tail or 90° PCB versions with quadrax or *El Ochito*® contacts. Connectors have factory-aligned contacts for thru-hole mounting. Connectors are epoxy sealed and are compatible with conformal coatings.

#### El Ochito® Octaxial Contacts



The Ochito contact is a high speed shielded #8 contact for termination to aerospace-grade differential pair cables. Compatible with #24 and #26 AWG wire, the Ochito provides high performance in a small size.

#### OCHITO PROTOCOLS



**WHITE**  
1000BASE-T  
10GBASE-T  
40GBASE-T



**BLUE**  
USB 3.0



**RED**  
HDMI, SATA,  
DisplayPort

#### Environmental Protection

792 connectors have fluorosilicone wire grommets and interfacial seals for ingress protection. PCB versions have epoxy-sealed terminals. Panel mount versions have a fluorosilicone O-ring for panel sealing.



#### Panel Mounting

Space-saving Series 792 connectors are designed for easy installation onto boxes and modules. The connector flange has blind threaded mounting holes and an O-ring for ingress protection.

#### Blind Mating

Series 792 connectors are available with guide pins for blind mate applications. Float mount versions are also available.



#### Up to 9 Data Ports in 6 Shell Sizes

792 connectors provide 1–9 data ports in a single connector.



#### EMI Shielding

##### Ground Springs

Optional ground springs provide low, stable shell-to-shell resistance. Available on 792 receptacles.

##### Conductive O-ring

792 panel mount connectors can be specified with a conductive O-ring for improved panel bonding.

##### EMI backshell

Lightweight banding backshells provide shielding. Split piggyback banding adapters seat into groove on connector shell for maximum shielding with minimum weight.



#### Grounded Arrangements

Grounded contact arrangements replace thermoplastic dielectric inserts with all-aluminum construction. Grounded versions prevent EMI noise from penetrating through the connector and provide a common ground.

#### 90° PCB Shroud

792 right angle PCB connectors have a metal shroud over contact tails for EMI shielding.

#### Combo Arrangements

792 combo arrangements have high-density size #23 contacts. Contacts are rated for 750 VAC, 5 amps, and accept #22 AWG wire.

