

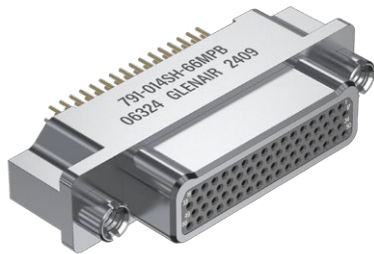
# MICRO-CRIMP RECTANGULAR CONNECTORS

## Series 791 Scoop-Proof



### 791-014 PCB Plug, Straight Tails

- ◆ Straight PCB termination
- ◆ Socket contacts



791-014 plug has straight PC tail socket contacts for thru-hole printed circuit board termination. PC tails are sealed with epoxy. Machined aluminum shell has integral standoff and threaded holes for attachment to PC board. Available in forty insert arrangements with up to 102 contacts. Contact sizes include high-density #23 contacts on .075 inch (1.9mm) centers, #16 contacts, #12 contacts, and #8 contacts.

- Aerospace-grade ultraminiature connector with scoop-proof duo-lobe shell
- Epoxy-sealed PCB terminals
- 40 insert arrangements with M39029-type contacts
- Environmental

INSERT ARRANGEMENTS				
Insert Arrangement	No. of Contacts			
	#23	#16	#12	#8
A-5	5			
B-2P2		2		
B-9	9			
C-13	13			
D-15	15			
D-3P3		3		
D-7P2	5	2		
E-11P2	9	2		
E-19	19			
E-7P3	4	3		
F-14P3	11	3		
F-15P2	13	2		
F-23	23			
F-5P5		5		
G-13P2	11		2	
G-21P1	20		1	
G-3P3			3	
G-33	33			
H-10P4	6		4	
H-29P7	22	7		
H-36P2	34		2	
H-51P1	50		1	
H-54P2	52	2		
H-5P5			5	
H-66	66			
J-17P4	13	4		
J-25P2	23	2		
J-33	33			
J-7P7		7		
K-27P4	23	4		
K-35P2	33	2		
K-43	43			
K-9P9		9		
L-22P4	18		4	
L-48P2	46		2	
L-6P6			6	
L-78	78			
M-17P17		17		
M-102	102			
M-4P4				4

HOW TO ORDER						
Sample Part Number	791-014S	G-13P2	MT	P	B	B
<b>Basic Part Number</b>	791-014S PCB Plug, Straight Tails, Socket Contacts					
<b>Shell Size-Insert Arr.</b>	See "Insert Arrangements" Table					
<b>Shell Finish</b>	<ul style="list-style-type: none"> <li><b>M</b> Electroless Nickel</li> <li><b>MT</b> Nickel / PTFE</li> <li><b>NF</b> Olive Drab Cadmium</li> <li><b>TZ</b> Tin-Zinc</li> <li><b>ZR</b> Black Zinc-Nickel</li> </ul>					
<b>Jackpost Option</b> <i>Table 1</i>	<ul style="list-style-type: none"> <li><b>N</b> No Jackposts</li> <li><b>P</b> Female Jackposts</li> <li><b>R1</b> Rear Panel Mount Jackposts .032 (0.81) Panel Thickness</li> <li><b>R2</b> Rear Panel Mount Jackposts .050 (1.27) Panel Thickness</li> <li><b>R3</b> Rear Panel Mount Jackposts .062 (1.59) Panel Thickness</li> <li><b>R4</b> Rear Panel Mount Jackposts .080 (2.03) Panel Thickness</li> <li><b>R5</b> Rear Panel Mount Jackposts .093 (2.36) Panel Thickness</li> <li><b>R6</b> Rear Panel Mount Jackposts .125 (3.18) Panel Thickness</li> </ul>					
<b>PC Tail Length</b>	<ul style="list-style-type: none"> <li><b>A</b> .125 inch (3.2 mm)</li> <li><b>B</b> .250 inch (6.4 mm)</li> <li><b>C</b> .375 inch (9.5 mm)</li> </ul>					
<b>Polarization Key Option</b>	Enter Letter Designator for Position <b>A, B, C, D, E,</b> or <b>F</b> per Mod Code 555 (see page B-8 for details) <b>Omit</b> for none					

TABLE 1 JACKPOST OPTION		
<p><b>N</b> No Hardware</p>	<p><b>P</b> Female Jackpost</p>	<p><b>R1 - R6</b> Rear Panel Jackpost</p>

RATINGS
■ Voltage (DWV): size 23 contacts 750 VAC, size 8, 12 and 16: 1800 VAC
■ Current: #23 5A, #16 13A, #12 23A, #8 46A
■ Operating temperature: -65 to +150 °C
■ Durability: 500 mating cycles
■ Shock: 300 g
■ Vibration: 20 g random
■ Altitude immersion: 75,000 feet
■ Ingress protection: IP67

CONSTRUCTION
■ Contacts: Copper alloy, gold over nickel finish
■ Shell: Aluminum
■ Insulator: High performance thermoplastic
■ Encapsulant: Epoxy
■ Hardware: Stainless steel

SERIES 791 SCOOP-PROOF

# MICRO-CRIMP RECTANGULAR CONNECTORS

## Series 791 Scoop-Proof

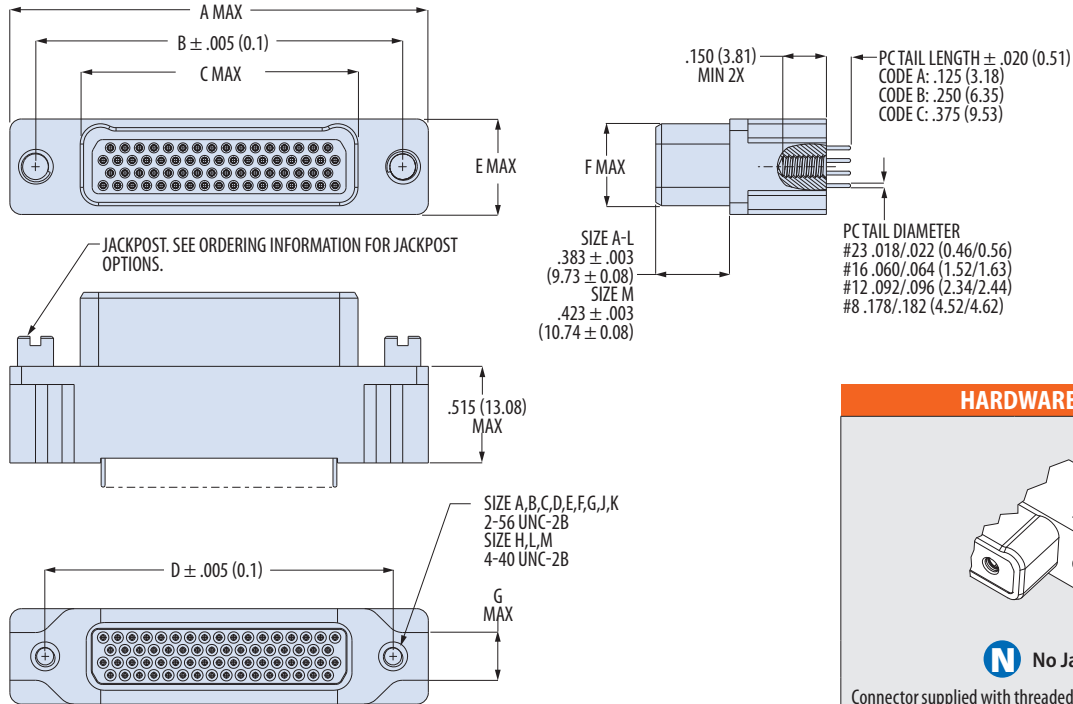


### 791-014

#### PCB Plug, Straight Tails

- ◆ Straight PCB termination
- ◆ Socket contacts

SERIES 791 SCOOP-PROOF



Shell Size	A Max		B ± .005 (0.1)		C Max		D ± .005 (0.1)		E Max		F Max		G Max	
	in	mm	in	mm	in	mm	in	mm	in	mm	in	mm	in	mm
A	.995	25.27	.750	19.05	.415	10.5	.565	14.35	.403	10.24	.320	8.13	.215	5.46
B	1.145	29.08	.900	22.86	.565	14.4	.715	18.16	.403	10.24	.320	8.13	.215	5.46
C	1.295	32.89	1.050	26.67	.715	18.2	.865	21.97	.403	10.24	.320	8.13	.215	5.46
D	1.370	34.80	1.125	28.58	.790	20.1	.965	24.51	.403	10.24	.320	8.13	.215	5.46
E	1.520	38.61	1.275	32.39	.940	23.9	1.115	28.31	.403	10.24	.320	8.13	.215	5.46
F	1.670	42.42	1.425	36.20	1.090	27.7	1.265	32.13	.403	10.24	.320	8.13	.215	5.46
G	1.630	41.40	1.388	35.26	1.052	26.7	1.215	30.86	.491	12.47	.420	10.67	.215	5.46
H	2.180	55.37	1.900	48.26	1.442	36.6	1.800	45.72	.509	12.93	.430	10.92	.265	6.73
J	2.045	51.94	1.800	45.72	1.465	37.2	1.615	41.02	.403	10.24	.320	8.13	.215	5.46
K	2.420	61.47	2.175	55.25	1.840	46.7	2.015	51.18	.403	10.24	.320	8.13	.215	5.46
L	2.416	61.37	2.136	54.25	1.678	42.6	2.036	51.71	.509	12.93	.430	10.92	.265	6.73
M	2.580	65.53	2.200	55.88	1.745	44.3	2.200	55.88	.577	14.66	.515	13.08	.275	6.99

**Application Note**  
**PCB Footprints**  
 See Section **G** for PC board layouts.  
 Straight tails: pages **G-1 – G-9**  
 90° tails: pages **G-10 – G-20**

**Application Note**  
**Polarization Key Positions**  
 See Mod Code 555 pg. B-8 for details

**Plug**      **Receptacle**

**Application Note**  
**Panel Cutout**  
 See page **B-52** for recommended panel cutout dimensions for connectors.

#### HARDWARE DETAILS

**N No Jackpost**  
 Connector supplied with threaded holes, .150 (3.8) minimum depth. Shell sizes A-G, J, K have 6-32 UNC-2B thread, sizes H and L have 8-32 UNC-2B thread. Size M has 10-32 UNF-2B thread.

**P Female Jackposts**  
 Non-removable female jackpost. Shell sizes A-G, J, K have 4-40 UNC-2B thread, sizes H and L have 6-32 UNC-2B thread. Size M has 8-32 UNC-2B thread. 300 series stainless steel, passivated.

**R1 - R6 Rear Panel Jackposts**  
 For rear panel mounting of connector onto .032 - .125 inch (0.81 - 3.18) thick panels. Install with threadlocking compound. Shell sizes A-G, J, K have 4-40 UNC-2B thread, sizes H and L have 6-32 UNC-2B thread. Size M has 8-32 UNC-2B thread. 300 series stainless steel, passivated. Supplied loosely assembled.