

## Series 79 Accessories Product Selection Guide

BACKSHELLS AND ACCESSORIES

### Band-Master ATS® Banding Straps and Tools

Banding Straps and Tools



Page F-3

### Connector Savers

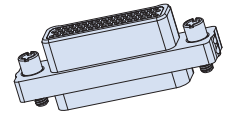


Sav-Con  
Series 790 Micro-Crimp



799-070 Page F-4

Sav-Con  
Series 791 Scoop-Proof



799-073 Page F-6

### Dust Caps

Anti-Static Dust Cap  
Series 790



799-013 Page F-8

Anti-Static Dust Cap  
Series 791



799-064 Page F-9

Anti-Static Dust Cap  
Series 792



799-160, -161 Page F-10

### Protective Covers

Protective Cover  
Series 790



799-018, -019 Page F-11

Protective Cover  
Series 791



799-038, -039 Page F-13

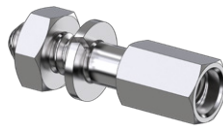
Protective Cover  
Series 792



799-162, -163 Page F-15

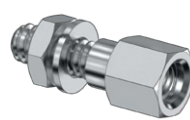
### Jackposts and Jackscrews

Jackpost  
*Not for Rear Panel Mtng.*



799-192 Page F-17

Jackpost  
Rear Panel Mount



799-117, -176 Page F-18

Jackpost  
*for Series 790 PCB*



799-119 Page F-20

Jackscrew with Clip



799-172 Page F-21

### Shorting Cap

Piggyback Shorting Cap  
*for Series 790 and 791*



799-067 Page F-22

### Panel Gasket *for Series 790*

Panel Gasket  
*for Series 790*



799-071 Page F-23

### Series 79 Accessories Product Selection Guide

BACKSHELLS AND ACCESSORIES

#### Series 790 Backshells

**EMI Banding Backshell**  
*for Series 790 Micro-Crimp*



**799-011** Page F-24

#### Piggyback Backshells *for Series 790 and 791*

**EMI Banding Backshell**  
*For Cable Connectors*



**799-015** Page F-26

**EMI Banding Backshell**  
*For Solder Cup Connectors*



**799-293** Page F-28

**EMI Banding Backshell**  
*For Extended Screws*



**799-331** Page F-30

**EMI Banding Backshell**  
*For Panel Mount Connectors*



**799-016** Page F-32

**EMI Banding Backshell**  
**Dual Port**



**799-131** Page F-34

#### Series 792 Backshells

**EMI Banding Backshell**  
*with Wire Grommet*



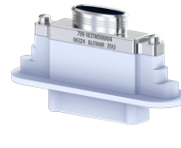
**799-164** Page F-35

**EMI Banding Backshell**  
**Variable Height**



**799-257** Page F-36

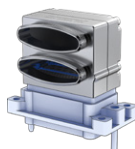
**EMI Banding Backshell**  
*For Panel Mount Connectors*



**799-183** Page F-37

#### Series 793 Piggyback Backshells

**EMI Banding Backshell**  
**Two Port Vertical**



**799-350** Page F-39

**EMI Banding Backshell**  
**Single Port Vertical**



**799-351** Page F-41