

# SERIES 79 MICRO-CRIMP RECTANGULAR CONNECTORS

## Backshells and Accessories

**SERIES**  
**79**

### 799-293

Piggyback EMI Banding Backshell, Extra Clearance

- ◆ Piggyback 2 piece, elliptical entry
- ◆ Band-Master® shield termination
- ◆ For solder cup connectors



**799-293**

This accessory fits solder cup connectors:  
790-069, 790-070, 240-790-069, 240-790-070, 240-791-001, 240-791-003  
Also compatible with crimp connectors:  
790-024, 790-025, 791-001, 791-003

#### Extra clearance for solder cup connectors.

799-293 piggyback backshell fits Series 790 and 791 connectors with rear groove on shell. Similar to 799-015 except with increased length and added clearance for solder cup connectors. Terminate cable shield to backshell with BandMaster ATS Micro band strap. Aluminum or stainless steel with stainless steel screws.

#### BAND OPTIONS

Stainless steel band strap provides fast, cost-effective and highly reliable termination of braided metallic shielding. *Micro Slim* bands have reduced thickness for weight reduction. High tension *Micro-Max* bands reduce braid-to-shell electrical resistance. Band is .12 (3.0) wide.



Band Type	Band P/N 14" Length Pre-Coiled	Hand Tool	Pneumatic Tool
Micro	601-065	601-101	601-107
Micro Slim	601-603	601-122	601-123
Micro-Max	601-703	601-129	601-130

#### HOW TO ORDER

Sample Part Number	799-293T	M	D	04	M	02-	T	S																																													
<b>Basic Part Number</b>	<b>799-293T</b>																																																				
<b>Material / Finish</b>	<ul style="list-style-type: none"> <li><b>M</b> Alum / Electroless Nickel</li> <li><b>MT</b> Alum / Nickel - PTFE</li> <li><b>N</b> Alum / Olive Drab Cadmium</li> <li><b>TZ</b> Alum / Tin-Zinc</li> <li><b>ZR</b> Alum / Black Zinc-Nickel</li> <li><b>Z1</b> Stainless Steel / Passivated</li> </ul>																																																				
<b>Shell Size</b>	<b>A B C D E F G H J K L M N</b>																																																				
<b>Entry Size</b>	<table border="1"> <thead> <tr> <th>Entry Size</th> <th>D</th> <th>Shell Size</th> </tr> </thead> <tbody> <tr><td>01</td><td>.140 (3.6)</td><td>A thru N</td></tr> <tr><td>02</td><td>.290 (7.4)</td><td>B thru N</td></tr> <tr><td>03</td><td>.440 (11.2)</td><td>C thru N</td></tr> <tr><td>04</td><td>.540 (13.7)</td><td>D thru N</td></tr> <tr><td>05</td><td>.690 (17.5)</td><td>E thru N</td></tr> <tr><td>06</td><td>.810 (20.6)</td><td>F thru N</td></tr> <tr><td>07</td><td>1.000 (25.4)</td><td>H thru N</td></tr> <tr><td>08</td><td>1.190 (30.2)</td><td>H thru N</td></tr> <tr><td>09</td><td>1.305 (33.1)</td><td>K thru N</td></tr> <tr><td>10</td><td>1.420 (36.1)</td><td>K thru N</td></tr> <tr><td>11</td><td>1.600 (40.6)</td><td>K and N</td></tr> <tr><td>12</td><td>1.500 (38.1)</td><td>K thru N</td></tr> <tr><td>13</td><td>1.750 (44.5)</td><td>N</td></tr> <tr><td>14</td><td>1.875 (47.6)</td><td>N</td></tr> </tbody> </table>		Entry Size	D	Shell Size	01	.140 (3.6)	A thru N	02	.290 (7.4)	B thru N	03	.440 (11.2)	C thru N	04	.540 (13.7)	D thru N	05	.690 (17.5)	E thru N	06	.810 (20.6)	F thru N	07	1.000 (25.4)	H thru N	08	1.190 (30.2)	H thru N	09	1.305 (33.1)	K thru N	10	1.420 (36.1)	K thru N	11	1.600 (40.6)	K and N	12	1.500 (38.1)	K thru N	13	1.750 (44.5)	N	14	1.875 (47.6)	N	<p><b>ENTRY SIZE</b></p>					
Entry Size	D	Shell Size																																																			
01	.140 (3.6)	A thru N																																																			
02	.290 (7.4)	B thru N																																																			
03	.440 (11.2)	C thru N																																																			
04	.540 (13.7)	D thru N																																																			
05	.690 (17.5)	E thru N																																																			
06	.810 (20.6)	F thru N																																																			
07	1.000 (25.4)	H thru N																																																			
08	1.190 (30.2)	H thru N																																																			
09	1.305 (33.1)	K thru N																																																			
10	1.420 (36.1)	K thru N																																																			
11	1.600 (40.6)	K and N																																																			
12	1.500 (38.1)	K thru N																																																			
13	1.750 (44.5)	N																																																			
14	1.875 (47.6)	N																																																			
<b>Band</b>	<ul style="list-style-type: none"> <li><b>M</b> Micro Band Included</li> <li><b>J</b> Micro Slim Band Included</li> <li><b>L</b> Micro-Max Band Included</li> </ul>																																																				
<b>Height Code</b>	<table border="1"> <thead> <tr> <th>Code</th> <th>H Height</th> </tr> </thead> <tbody> <tr><td>02</td><td>.940 (23.9)</td></tr> <tr><td>03</td><td>1.060 (26.9)</td></tr> <tr><td>04</td><td>1.190 (30.2)</td></tr> <tr><td>05</td><td>1.310 (33.3)</td></tr> <tr><td>06</td><td>1.440 (36.6)</td></tr> <tr><td>07</td><td>1.560 (39.6)</td></tr> <tr><td>08</td><td>1.690 (42.9)</td></tr> <tr><td>09</td><td>1.810 (46.0)</td></tr> <tr><td>10</td><td>1.940 (49.3)</td></tr> <tr><td>11</td><td>2.060 (52.3)</td></tr> <tr><td>12</td><td>2.190 (55.6)</td></tr> <tr><td>13</td><td>2.310 (58.7)</td></tr> <tr><td>14</td><td>2.440 (62.0)</td></tr> <tr><td>15</td><td>2.560 (65.0)</td></tr> </tbody> </table>		Code	H Height	02	.940 (23.9)	03	1.060 (26.9)	04	1.190 (30.2)	05	1.310 (33.3)	06	1.440 (36.6)	07	1.560 (39.6)	08	1.690 (42.9)	09	1.810 (46.0)	10	1.940 (49.3)	11	2.060 (52.3)	12	2.190 (55.6)	13	2.310 (58.7)	14	2.440 (62.0)	15	2.560 (65.0)	<p><b>HEIGHT</b></p>																				
Code	H Height																																																				
02	.940 (23.9)																																																				
03	1.060 (26.9)																																																				
04	1.190 (30.2)																																																				
05	1.310 (33.3)																																																				
06	1.440 (36.6)																																																				
07	1.560 (39.6)																																																				
08	1.690 (42.9)																																																				
09	1.810 (46.0)																																																				
10	1.940 (49.3)																																																				
11	2.060 (52.3)																																																				
12	2.190 (55.6)																																																				
13	2.310 (58.7)																																																				
14	2.440 (62.0)																																																				
15	2.560 (65.0)																																																				
<b>Qwik-Ty®</b>	<ul style="list-style-type: none"> <li><i>Omit for None</i></li> <li><b>T</b> Qwik-Ty Strain Relief Arm Included</li> </ul>																																																				
<b>Slots</b>	<ul style="list-style-type: none"> <li><i>Omit for None</i></li> <li><b>S</b> Slots in Banding Area</li> </ul>																																																				

BACKSHELLS AND ACCESSORIES

# SERIES 79 MICRO-CRIMP RECTANGULAR CONNECTORS

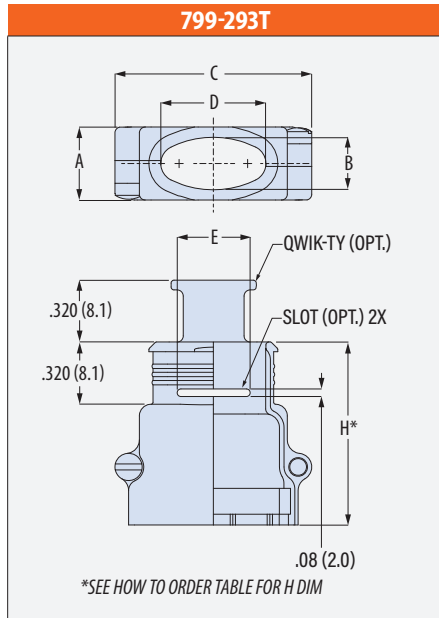
## Backshells and Accessories



### 799-293

### Piggyback EMI Banding Backshell, Extra Clearance

- ◆ Piggyback 2 piece, elliptical entry
- ◆ Band-Master® shield termination
- ◆ For solder cup connectors



Shell Size	A Max		B		C Max		Available Entries
	in	mm	in	mm	in	mm	
A	.385	9.8	.270	6.9	.625	15.9	01
B	.385	9.8	.270	6.9	.775	19.7	01 thru 02
C	.385	9.8	.270	6.9	.925	23.5	01 thru 03
D	.385	9.8	.270	6.9	1.025	26.0	01 thru 04
E	.385	9.8	.270	6.9	1.175	29.8	01 thru 05
F	.385	9.8	.270	6.9	1.325	33.7	01 thru 06
G	.465	11.8	.350	8.9	1.290	32.8	01 thru 06
H	.495	12.6	.380	9.7	1.665	42.3	01 thru 08
J	.385	9.8	.270	6.9	1.675	42.5	01 thru 08
K	.385	9.8	.270	6.9	2.075	52.7	01 thru 12
L	.495	12.6	.380	9.7	1.900	48.3	01 thru 10
M	.555	14.1	.440	11.2	1.970	50.0	01 thru 10, 12
N	.650	16.5	.535	13.6	2.345	59.6	01 thru 14

Entry Size	D		E		Available Sizes
	in	mm	in	mm	
01	.140	3.6	.090	2.3	A thru N
02	.290	7.4	.170	4.3	B thru N
03	.440	11.2	.250	6.4	C thru N
04	.540	13.7	.340	8.6	D thru N
05	.690	17.5	.430	10.9	E thru N
06	.810	20.6	.505	12.8	F thru N
07	1.000	25.4	.625	15.9	H thru N
08	1.190	30.2	.745	18.9	H thru N
09	1.305	33.1	.815	20.7	K thru N
10	1.420	36.1	.890	22.6	K thru N
11	1.600	40.6	1.000	25.4	K and N
12	1.500	38.1	.940	23.9	K thru N
13	1.750	44.5	1.095	27.8	N
14	1.875	47.6	1.170	29.7	N

BACKSHELLS AND ACCESSORIES