

# SERIES 79 MICRO-CRIMP RECTANGULAR CONNECTORS

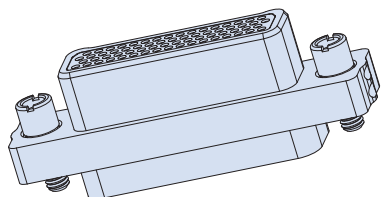
## Backshells and Accessories

SERIES  
**79**

### 799-073

Sav-Con, Series 791

BACKSHELLS AND ACCESSORIES



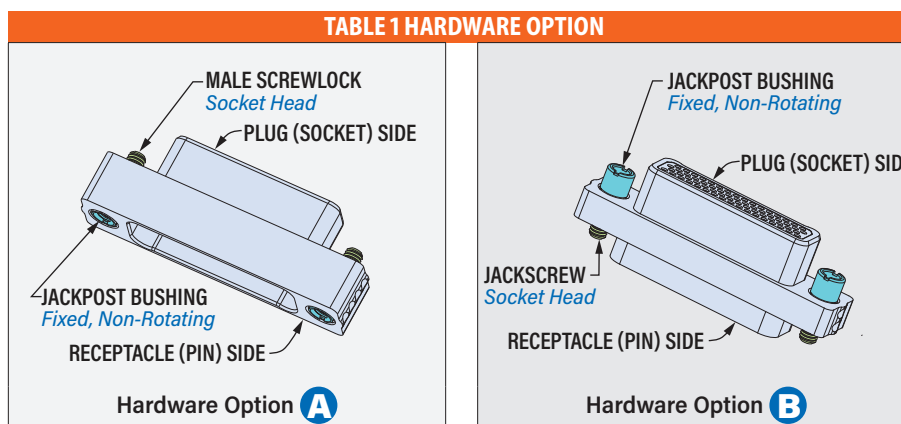
799-073 connector saver protects Series 791 Scoop-Proof connectors from wear and tear. Sav-Con has plug (socket) interface on one side and receptacle (pin) interface on the other side. Fully assembled, contacts are not removable. Optional EMI ground spring. Attach saver to mating connector jackposts with hex drive male jackscrews, then attach second mating connector.



- Connector saver for Series 791 connectors
- Environmental

INSERT ARRANGEMENTS				
Insert Arrangement	No. of Contacts			
	#23	#16	#12	#8
A-5	5			
B-2P2		2		
B-9	9			
C-13	13			
D-15	15			
D-3P3		3		
D-7P2	5	2		
E-11P2	9	2		
E-19	19			
E-7P3	4	3		
F-14P3	11	3		
F-15P2	13	2		
F-23	23			
F-5P5		5		
G-13P2	11		2	
G-21P1	20		1	
G-3P3			3	
G-33	33			
H-10P4	6		4	
H-29P7	22	7		
H-36P2	34		2	
H-51P1	50		1	
H-54P2	52	2		
H-5P5			5	
H-66	66			
J-17P4	13	4		
J-25P2	23	2		
J-33	33			
J-7P7		7		
K-27P4	23	4		
K-35P2	33	2		
K-43	43			
K-9P9		9		
L-22P4	18		4	
L-48P2	46		2	
L-6P6			6	
L-78	78			
M-17P17		17		
M-102	102			
M-4P4				4

HOW TO ORDER					
Sample Part Number	799-073	H-66	E	M	B
Basic Part Number	799-073 Connector Saver, Series 791				
Shell Size-Insert Arr.	See "Insert Arrangements" Table				
EMI Spring	E EMI Spring <i>Shell finishes M and MT only</i> N No EMI Spring				
Shell Finish	M Electroless Nickel MT Nickel / PTFE N Olive Drab Cadmium TZ Tin-Zinc ZR Black Zinc-Nickel				
Hardware Option	A Male Screwlocks on Plug Side, Jackpost Bushings on Receptacle Side B Jackpost Bushings on Plug Side, Male Jackscrews on Receptacle Side				



RATINGS	
■ Voltage (DWV): size 23 contacts 750 VAC, Size 8, 12 and 16: 1800 VAC	
■ Current: #23 5A, #16 13A, #12 23A, #8 46A	
■ Operating temperature: -65 to +150 °C	
■ Durability: 500 mating cycles	
■ Shock: 300 g	
■ Vibration: 20 g random	
■ Altitude immersion: 75,000 feet	
■ Ingress protection: IP67	

CONSTRUCTION	
■ Contacts: Copper alloy, gold over nickel finish	
■ Shell: Aluminum	
■ Ground spring: Stainless steel, gold plated	
■ Insulator: High performance thermoplastic	
■ Face seal: Fluorosilicone/silicone blend	
■ Hardware: Stainless steel	

# SERIES 79 MICRO-CRIMP RECTANGULAR CONNECTORS Backshells and Accessories



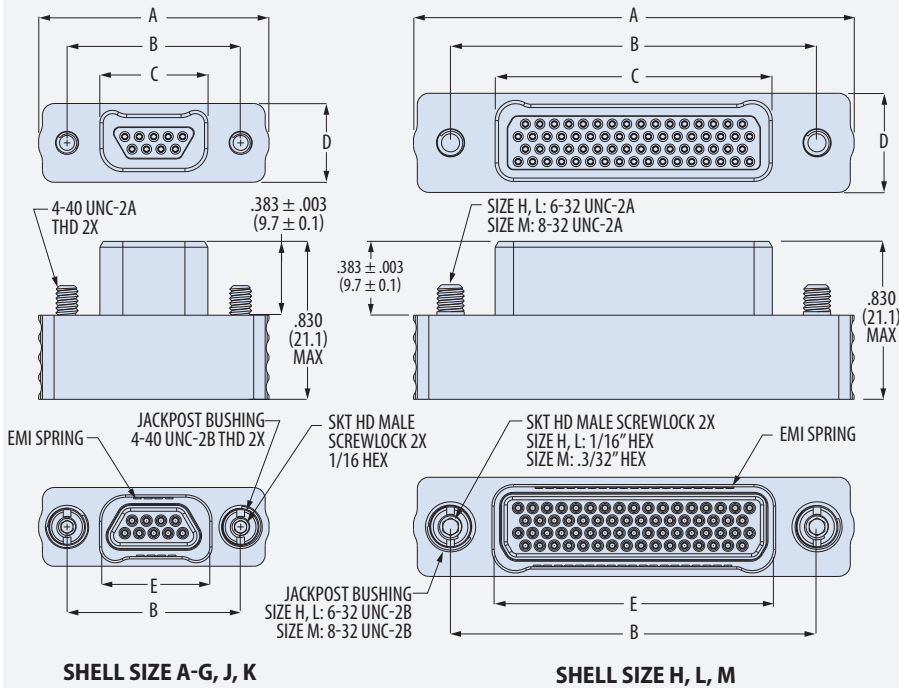
## 799-073

### Sav-Con, Series 791

BACKSHELLS AND ACCESSORIES

#### 799-073 HARDWARE OPTION A

MALE SCREWLOCKS ON PLUG SIDE, JACKPOST BUSHINGS ON RECEPTACLE SIDE

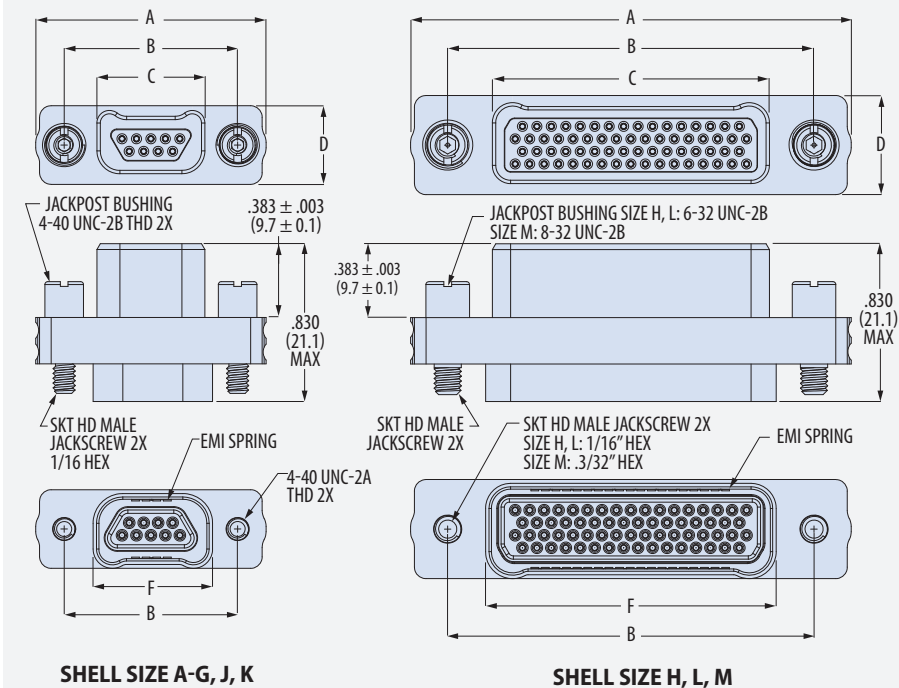


Shell Size	A Max		B ± .005 (0.1)		C Max	
	in	mm	in	mm	in	mm
A	1.050	26.7	.750	19.1	.415	10.5
B	1.200	30.5	.900	22.9	.565	14.4
C	1.350	34.3	1.050	26.7	.715	18.2
D	1.425	36.2	1.125	28.6	.790	20.1
E	1.575	40.0	1.275	32.4	.940	23.9
F	1.725	43.8	1.425	36.2	1.090	27.7
G	1.695	43.1	1.388	35.3	1.051	26.7
H	2.295	58.3	1.900	48.3	1.445	36.7
J	2.100	53.3	1.800	45.7	1.465	37.2
K	2.475	62.9	2.175	55.2	1.840	46.7
L	2.531	64.3	2.136	54.3	1.681	42.7
M	2.585	65.7	2.200	55.9	1.739	44.2

Shell Size	D Max		E Max		F Max	
	in	mm	in	mm	in	mm
A	.415	10.5	.440	11.2	.485	12.3
B	.415	10.5	.590	15.0	.635	16.1
C	.415	10.5	.740	18.8	.785	19.9
D	.415	10.5	.815	20.7	.860	21.8
E	.415	10.5	.965	24.5	1.010	25.7
F	.415	10.5	1.110	28.2	1.160	29.5
G	.505	12.8	1.077	27.4	1.127	28.6
H	.525	13.3	1.470	37.3	1.516	38.5
J	.415	10.5	1.490	37.8	1.535	39.0
K	.415	10.5	1.865	47.4	1.910	48.5
L	.525	13.3	1.703	43.3	1.752	44.5
M	.630	16.0	1.765	44.8	1.815	46.1

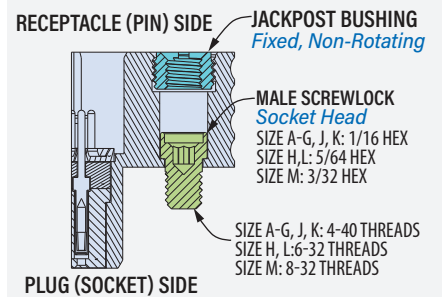
#### 799-073 HARDWARE OPTION B

MALE JACKSCREWS ON RECEPTACLE SIDE, JACKPOST BUSHINGS ON PLUG SIDE



#### 799-073 HARDWARE OPTION A

MALE SCREWLOCK ON PLUG (SOCKET) SIDE, JACKPOST BUSHING ON RECEPTACLE (PIN) SIDE



#### 799-073 HARDWARE OPTION B

MALE JACKSCREW RECEPTACLE (PIN) SIDE, JACKPOST BUSHING ON PLUG (SOCKET) SIDE

