

SERIES 79 MICRO-CRIMP RECTANGULAR CONNECTORS

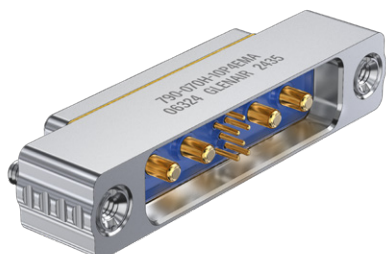
Backshells and Accessories

SERIES
79

799-070

Sav-Con, Series 790

BACKSHELLS AND ACCESSORIES



799-070 connector saver protects Series 790 Micro-Crimp connectors from wear and tear. Sav-Con has plug (socket) interface on one side and receptacle (pin) interface on the other side. Fully assembled, contacts are not removable. Optional EMI ground spring. Attach saver to mating connector jackposts with hex drive male jackscrews, then attach second mating connector.



- Connector saver for Series 790 connectors
- Environmental

INSERT ARRANGEMENTS				
Insert Arrangement	No. of Contacts			
	#23	#16	#12	#8
A-5	5			
B-2P2		2		
B-9	9			
C-13	13			
D-15	15			
D-3P3		3		
D-7P2	5	2		
E-11P2	9	2		
E-19	19			
E-7P3	4	3		
F-14P3	11	3		
F-15P2	13	2		
F-23	23			
F-5P5		5		
G-13P2	11		2	
G-21P1	20		1	
G-3P3			3	
G-33	33			
H-10P4	6		4	
H-29P7	22	7		
H-36P2	34		2	
H-51P1	50		1	
H-54P2	52	2		
H-5P5			5	
H-66	66			
J-17P4	13	4		
J-25P2	23	2		
J-33	33			
J-7P7		7		
K-27P4	23	4		
K-35P2	33	2		
K-43	43			
K-9P9		9		
L-22P4	18		4	
L-48P2	46		2	
L-6P6			6	
L-78	78			
M-17P17		17		
M-102	102			
M-4P4				4

HOW TO ORDER					
Sample Part Number	799-070	G-33	E	M	A
Basic Part Number	799-070 Connector Saver, Series 790				
Shell Size-Insert Arr.	See "Insert Arrangements" Table				
EMI Spring	E EMI Spring <i>Shell finishes M and MT only</i> N No EMI Spring				
Shell Finish	M Electroless Nickel MT Nickel / PTFE N Olive Drab Cadmium TZ Tin-Zinc ZR Black Zinc-Nickel				
Hardware Option	A Male Screwlocks on Plug Side, Jackpost Bushings on Receptacle Side B Jackpost Bushings on Plug Side, Male Jackscrews on Receptacle Side				

TABLE 1 HARDWARE OPTION			
	Plug Side Male Screwlocks	Receptacle Side Jackpost Bushing	
	Plug Side Jackpost Bushing	Receptacle Side Male Screwlocks	
Hardware Option A		Hardware Option B	

RATINGS
■ Voltage (DWV): size 23 contacts 750 VAC, Size 8, 12 and 16: 1800 VAC
■ Current: #23 5A, #16 13A, #12 23A, #8 46A
■ Operating temperature: -65 to +150 °C
■ Durability: 500 mating cycles
■ Shock: 300 g
■ Vibration: 20 g random
■ Altitude immersion: 75,000 feet
■ Ingress protection: IP67

CONSTRUCTION
■ Contacts: Copper alloy, gold over nickel finish
■ Shell: Aluminum
■ Ground spring: Stainless steel, gold plated
■ Insulator: High performance thermoplastic
■ Face seal: Fluorosilicone/silicone blend
■ Hardware: Stainless steel

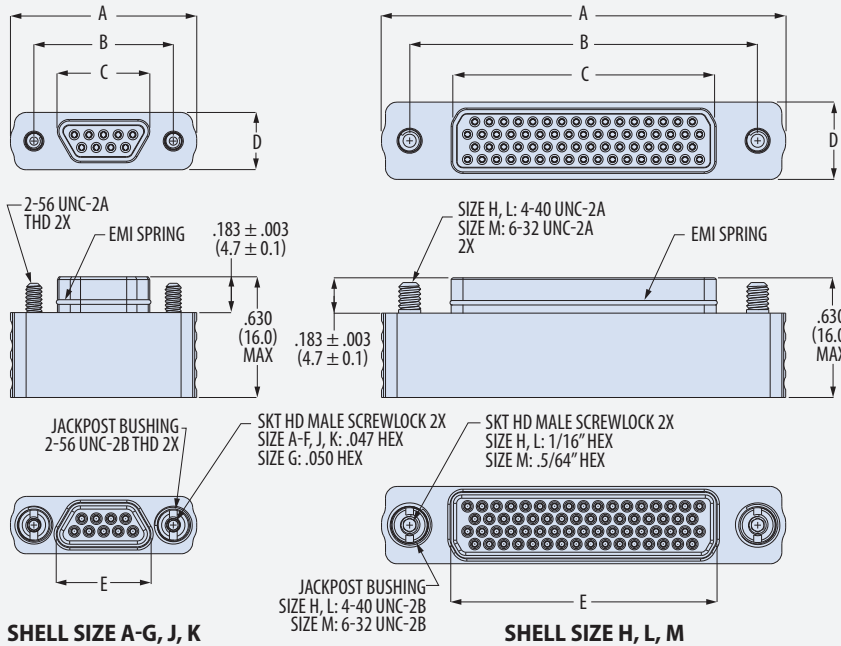
SERIES 79 MICRO-CRIMP RECTANGULAR CONNECTORS Backshells and Accessories



799-070

Sav-Con, Series 790

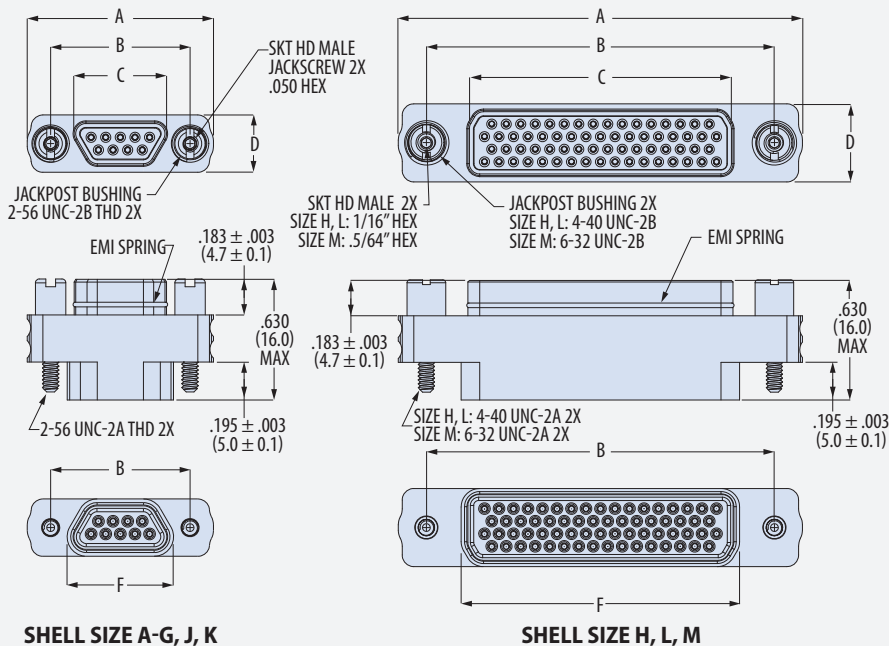
799-070 HARDWARE OPTION **A** MALE SCREWLOCK ON PLUG SIDE, JACKPOST BUSHING ON RECEPTACLE SIDE



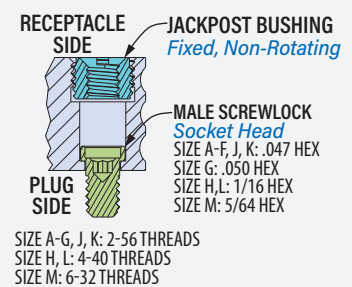
Shell Size	A Max		B ± .005 (0.1)		C Max	
	in	mm	in	mm	in	mm
A	.820	20.8	.565	14.4	.335	8.5
B	.970	24.6	.715	18.2	.485	12.3
C	1.120	28.4	.865	22.0	.635	16.1
D	1.220	31.0	.965	24.5	.735	18.7
E	1.370	34.8	1.115	28.3	.885	22.5
F	1.520	38.6	1.265	32.1	1.035	26.3
G	1.470	37.3	1.215	30.9	1.010	25.7
H	2.105	53.5	1.800	45.7	1.385	35.2
J	1.880	47.8	1.615	41.0	1.390	35.3
K	2.275	57.8	2.015	51.2	1.795	45.6
L	2.341	59.5	2.036	51.7	1.623	41.2
M	2.555	64.9	2.200	55.9	1.680	42.7

Shell Size	D Max		E Max		F Max	
	in	mm	in	mm	in	mm
A	.309	7.8	.365	9.3	.455	11.6
B	.309	7.8	.515	13.1	.555	14.1
C	.309	7.8	.665	16.9	.705	17.9
D	.309	7.8	.765	19.4	.805	20.4
E	.309	7.8	.915	23.2	.955	24.3
F	.309	7.8	1.065	27.1	1.105	28.1
G	.392	10.0	1.040	26.4	1.079	27.4
H	.415	10.5	1.415	35.9	1.450	36.8
J	.309	7.8	1.420	36.1	1.460	37.1
K	.309	7.8	1.823	46.3	1.860	47.2
L	.415	10.5	1.651	41.9	1.686	42.8
M	.479	12.2	1.710	43.4	1.745	44.3

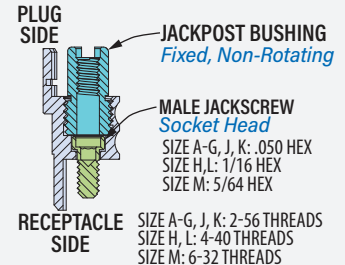
799-070 HARDWARE OPTION **B** JACKPOST BUSHING ON PLUG SIDE, MALE JACKSCREW ON RECEPTACLE SIDE



799-070 HARDWARE OPTION **A** MALE SCREWLOCK ON PLUG SIDE, JACKPOST BUSHING ON RECEPTACLE SIDE



799-070 HARDWARE OPTION **B** MALE JACKSCREW ON RECEPTACLE SIDE, JACKPOST BUSHING ON PLUG SIDE



BACKSHELLS AND ACCESSORIES