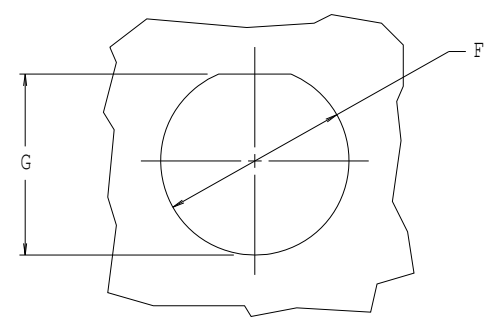


THIS COPYRIGHTED DOCUMENT IS THE PROPERTY OF GLENAIR, INC. AND IS FURNISHED ON THE CONDITION THAT IT IS NOT TO BE DISCLOSED, REPRODUCED IN WHOLE OR IN PART, OR USED TO SOLICIT QUOTATIONS FROM COMPETITIVE SOURCES, OR USED FOR MANUFACTURE BY ANYONE OTHER THAN GLENAIR, INC. WITHOUT WRITTEN PERMISSION FROM GLENAIR, INC. THE INFORMATION HEREIN HAS BEEN DEVELOPED AT GLENAIR'S EXPENSE AND MAY BE USED FOR ENGINEERING EVALUATION AND INCORPORATION INTO TECHNICAL SPECIFICATIONS AND OTHER DOCUMENTS WHICH SPECIFY PROCUREMENT OF PRODUCTS FROM GLENAIR, INC.

REVISIONS			
SYM.	DESCRIPTION	DATE	APPROVED
1	PRELIMINARY	10/02/09	GSB

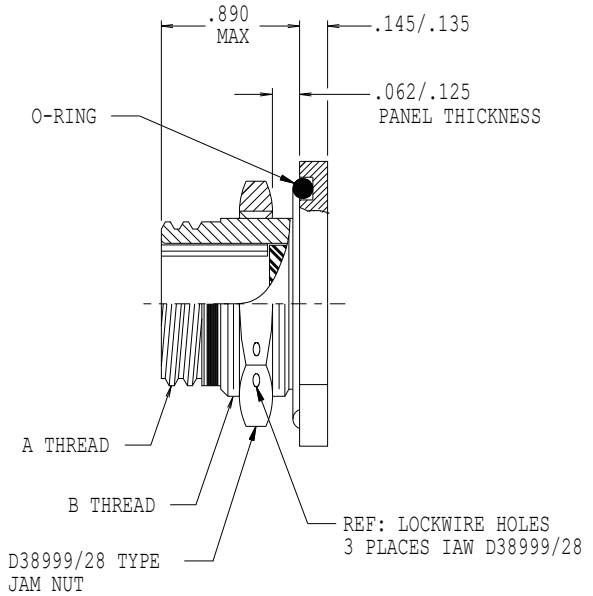
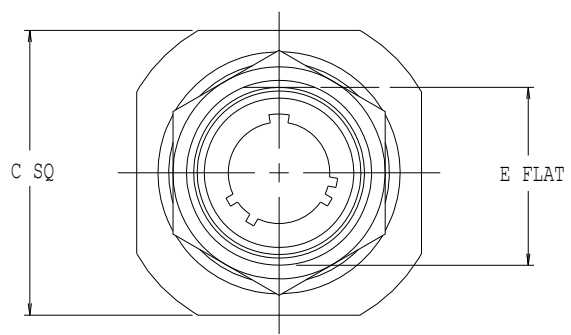
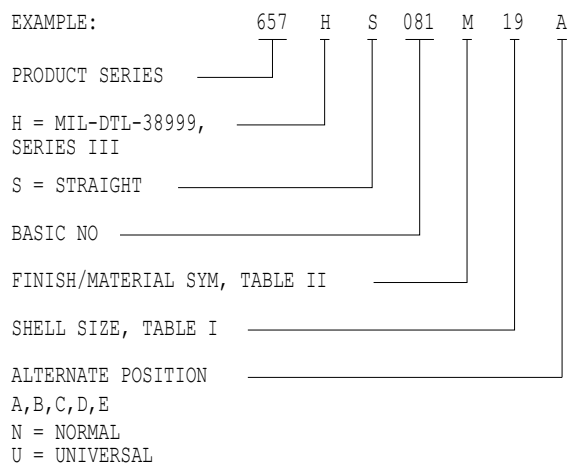
SHELL SIZE	SHELL SIZE CODE	A THREAD CLASS 2A	B THREAD CLASS 2A 0.100R	C	E FLAT +.004 - .006	F +.010 - .000	G +.000 - .010
09	A	.625-.1P-.3L	M17 X 1 - 6g	1.062	.651	.697	.669
11	B	.750-.1P-.3L	M20 X 1 - 6g	1.250	.751	.822	.769
13	C	.875-.1P-.3L	M25 X 1 - 6g	1.375	.938	1.007	.955
15	D	1.000-.1P-.3L	M28 X 1 - 6g	1.500	1.061	1.134	1.084
17	E	1.187-.1P-.3L	M32 X 1 - 6g <sup>△</sup>	1.625	1.187	1.259	1.208
19	F	1.250-.1P-.3L	M35 X 1 - 6g	1.812	1.312	1.384	1.333
21	G	1.375-.1P-.3L	M38 X 1 - 6g	1.931	1.437	1.501	1.459
23	H	1.500-.1P-.3L	M41 X 1 - 6g	2.062	1.562	1.634	1.584
25	J	1.625-.1P-.3L	M44 X 1 - 6g	2.188	1.687	1.759	1.709

SYM	FINISH/MATERIAL DESCRIPTION
M	ELECTROLESS NICKEL/ALUMINUM
NF	CAD/O. D. OVER ELECTROLESS NICKEL (500 HOUR SALT SPRAY) /ALUMINUM
MT	NICKEL-PTFE/ALUMINUM
AL	ELECTRODEPOSITED ALUMINUM /ALUMINUM <sup>△</sup>
ZR	BLACK ZN-NI/ALUMINUM
Z1	300 SERIES SST/PASSIVATED.
ZL	300 SERIES SST/NICKEL PLATED.



RECOMMENDED PANEL CUT-OUT

PART NUMBER DEVELOPMENT



NOTES:

- ASSEMBLY IDENTIFIED WITH MANUFACTURER'S NAME AND P/N, SPACE PERMITTING.
- MATERIAL/FINISH :  
ADAPTER, JAM NUT - AL ALLOY OR STAINLESS STEEL/SEE TABLE II .  
SEAL - SILICONE/N.A.  
O-RING - FLUOROSILICONE/N.A.



3 MODIFIED MAJOR DIAMETER (1.252-1.258).

4 THREADS TO BE LUBED.

UNLESS OTHERWISE SPECIFIED DIMENSIONS ARE IN INCHES TOLERANCES:  FRACTIONS ± 1/16 DECIMALS .XX ± .03 .XXX ± .015 ANGLES ± 2°	DO NOT SCALE THIS DRAWING	DRAWN ORCHANIAN 10/02/09	<b>GLENAIR, INC.</b> CAD 2000 1211 AIR WAY - GLENDALE - CALIFORNIA 91201 DUMMY STOWAGE RECEPTACLES MIL-DTL-38999, SERIES III CONNECTORS
		CHECK P.OAKES 10/02/09	
		ENGR R.PAINTER 10/02/09	
		APPROVED <i>D. Brown</i>	
		APPROVED <i>D. Brown</i>	
		RELEASE DATE 10/02/09	CODE IDENT. NO. 06324
		ORIGINAL RELEASE DATE	SIZE C
B/F 09C3765	P/C 657	NON REPARABLE COMMERCIAL ITEM	657-081
			REV. 1
		SCALE N/A	SHEET 1 OF 1