

Series 62 Saddle Clamps

for Series 80 Mighty Mouse Connectors

620MS064 Saddle Clamp, General Purpose, Direct Coupling



Adapter Code **M**

This accessory fits Series 80 Mighty Mouse Connectors

MATERIAL/FINISH

Body, saddles: aluminum or SST/ finish per PN Build
Screws, washers: stainless steel/passivated

Full radius saddles. Lightweight. Low profile. Direct coupling. Saddle clamp fits Series 80 Mighty Mouse connectors. Aluminum or stainless steel.

PART NUMBER

620MS064

MT

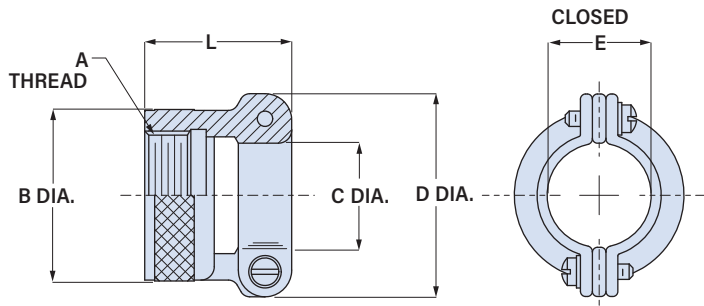
09

Base P/N **620MS064** Straight

Material/Finish

- C** Alum/Black Anodize
- M** Alum/Electroless Nickel
- MT** Alum/Nickel-PTFE
- NF** Alum/Olive Drab Cadmium
- ZR** Alum/Black Zinc-Nickel
- TZ** Alum/Tin-Zinc
- ZI** SST/Passivated

Size Code **05 06 07 08 09 10 11 12 13 14 15 16 17**
See table below for size code



Size Code	Shell Size		A Thread UNEF-2B	øB Max.		C Dia.		D Dia.		E Closed		L Max.	
	Series 800, 801, 803, 804	Series 805		in	mm	in	mm	in	mm	in	mm	in	mm
05	5	N/A	0.250-32	.350	8.9	.119	3.0	.496	12.6	.11	2.8	.625	15.9
06	6	N/A	0.3125-32	.415	10.5	.182	4.6	.582	14.8	.17	4.3	.625	15.9
11	N/A	8	0.3750-32	.465	11.8	.182	4.6	.582	14.8	.17	4.3	.625	15.9
07	7	9	0.4375-28	.530	13.5	.244	6.2	.656	16.7	.23	5.8	.688	17.5
08	8	10	0.500-28	.595	15.1	.307	7.8	.726	18.4	.30	7.6	.688	17.5
09	9	11	0.5625-24	.650	16.5	.307	7.8	.726	18.4	.30	7.6	.750	19.1
10	10	12	0.625-24	.715	18.2	.369	9.4	.885	22.5	.36	9.1	.875	22.2
12	11, 12, 13	13	0.6875-24	.785	19.9	.432	11.0	.952	24.2	.42	10.7	.875	22.2
13	N/A	15	0.750-20	.830	21.1	.432	11.0	.952	24.2	.42	10.7	.875	22.2
14	14, 15, 16, 17	18, 19	0.9375-20	1.020	25.9	.494	12.6	1.018	25.9	.48	12.2	1.000	25.4
15	14, 15, 16, 17	18, 19	0.9375-20	1.020	25.9	.619	15.7	1.148	29.2	.61	15.5	1.000	25.4
16	19	21	1.0625-18	1.155	29.3	.744	18.9	1.273	32.3	.73	18.5	1.000	25.4
17	21	23	1.1875-18	1.280	32.5	.869	22.1	1.400	35.6	.86	21.8	1.125	28.6