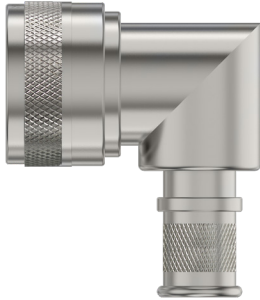


Series 44 Banding Backshells

for MIL-DTL-38999 Series I and II Connectors

440F*030 Banding Backshell, Shrink Boot



Adapter Code F

This accessory fits these connectors:
MIL-DTL-38999 Series I and Series II

PROFILE SELECTION GUIDE

<p>S Straight</p>	<p>C 90° Low Profile Split</p>
<p>D 90° Split</p>	<p>F 45° Split</p>
<p>H 45° Cut and Weld</p>	<p>J 90° Cut and Weld</p>
<p>M 45° Full Radius</p>	<p>N 90° Full Radius</p>

Spin coupling. Band-Master ATS® shield termination. 440F*030 banding backshell fits MIL-DTL-38999 Series I and II connectors. Terminate cable braid shield to backshell with optional band strap. Optional shrink boot adds strain relief and environmental protection. Aluminum or stainless steel, silicone O-ring (not supplied on split profiles C, D and F).

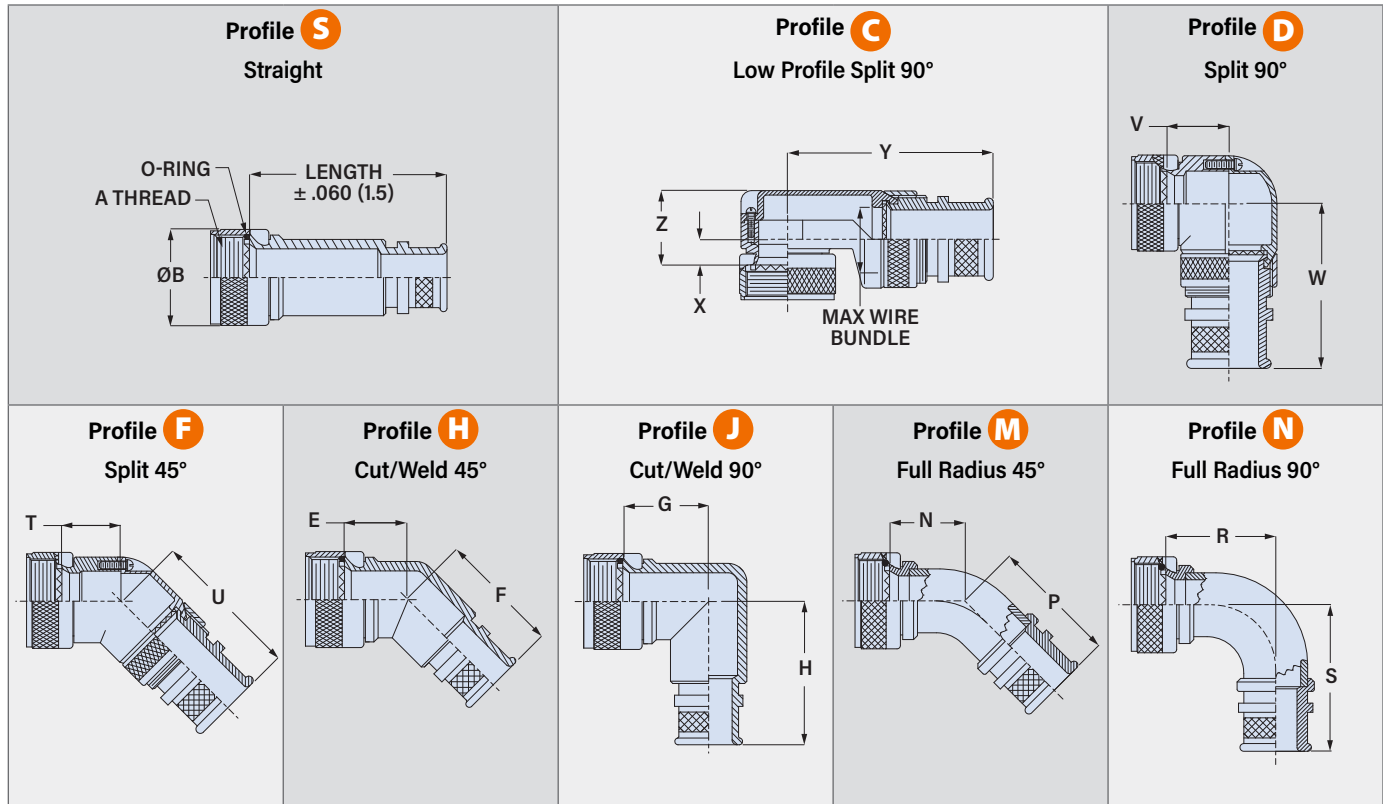
PART NUMBER

		440FS030	NF	16	06-	4	K	P	T		
Base P/N	Base Part No.	Profile									
	440FS030	S	Straight								
	440FC030	C	90° Split Low Prof.								
	440FD030	D	90° Split								
	440FF030	F	45° Split								
	440FH030	H	45° Cut/Weld								
	440FJ030	J	90° Cut/Weld								
	440FM030	M	45° Full Radius								
	440FN030	N	90° Full Radius								
Material/Finish	M	Alum/ Electroless Nickel									
	MT	Alum/ Nickel-PTFE									
	NF	Alum/ Olive Drab Cadmium									
	ZR	Alum/ Black Zinc-Nickel									
	TZ	Alum/ Tin-Zinc									
	ZI	SST/ Passivated (Profiles H, J, M, N, S only)									
Shell Size	Shell Size										
	38999 Series I	9	11	13	15	17	19	21	23	25	
	38999 Series II	8	10	12	14	16	18	20	22	24	
	Size Code	08	10	12	14	16	18	20	22	24	
Entry Size	Shell										
	Size	Inside Dia.	Shell Sizes	Size	Inside Dia.	Shell Sizes					
	01	.125 (3.2)	08-24	07	.875 (22.2)	18-24					
	31	.188 (4.8)	08-24	37	.938 (23.8)	20-24					
	02	.250 (6.4)	08-24	08	1.000 (25.4)	20-24					
	32	.312 (7.9)	10-24	38	1.062 (27.0)	22-24					
	03	.375 (9.5)	10-24	09	1.125 (28.6)	22-24					
	33	.438 (11.1)	12-24	10	1.250 (31.8)	24					
	04	.500 (12.7)	12-24	11	1.375 (34.9)	-					
	34	.562 (14.3)	14-24	12	1.500 (38.1)	-					
	05	.625 (15.9)	14-24	13	1.625 (41.3)	-					
	35	.688 (17.5)	16-24	14	1.750 (44.5)	-					
	06	.750 (19.1)	16-24	15	1.875 (47.6)	-					
	36	.812 (20.6)	18-24	16	2.000 (50.8)	-					
	* If selected entry size exceeds shell size range, a Style 2 transition adapter will be included. See Maximum Entry Size for details. Δ Profile \odot entry size cannot exceed shell size range listed in table.										
	Length	3	1.5 inches	Applies to Profile S only.							
4		2.0 inches	If Entry Size is greater than "Maximum Entry Size" (see table), then 2 inch minimum applies.								
5		2.5 inches									
6		3.0 inches									
Band	Omit if not required										
	K	Pre-Coiled Band Included With Backshell									
Polysulfide	Omit if not required. Applies to Plating Codes NF, ZR, TZ only.										
	P	Nickel Plated Shield Termination Area with Polysulfide Barrier									
Shrink Boot	Omit if not required										
	T	Shrink Boot Included With Backshell									
	TI	Adhesive-lined Shrink Boot Included With Backshell									

Series 44 Banding Backshells

for MIL-DTL-38999 Series I and II Connectors

440F*030 Banding Backshell, Shrink Boot



Shell Size	A Thread UNEF-2B	øB Max in	mm	E Max. in	mm	F Max. in	mm	G Max. in	mm	H Max. in	mm	N Max. in	mm	P Max. in	mm	R Max. in	mm	S Max. in	mm
8/9	0.4375-28	.650	16.5	.531	13.5	.94	23.9	.639	16.2	1.110	28.2	.812	20.6	1.017	25.8	1.125	28.6	1.335	33.9
10/11	0.5625-24	.770	19.6	.594	15.1	1.00	25.4	.664	16.9	1.140	29.0	.875	22.2	1.071	27.2	1.250	31.8	1.460	37.1
12/13	0.6875-24	.890	22.6	.618	15.7	1.05	26.7	.688	17.5	1.160	29.5	.938	23.8	1.121	28.5	1.375	34.9	1.585	40.3
14/15	0.8125-20	1.020	25.9	.656	16.7	1.09	27.7	.705	17.9	1.190	30.2	1.000	25.4	1.175	29.8	1.500	38.1	1.710	43.4
16/17	0.9375-20	1.150	29.2	.688	17.5	1.15	29.2	.732	18.6	1.210	30.7	1.062	27.0	1.224	31.1	1.625	41.3	1.835	46.6
18/19	1.0625-18	1.230	31.2	.748	19.0	1.19	30.2	.803	20.4	1.221	31.0	1.094	27.8	1.274	32.4	1.750	44.5	1.960	49.8
20/21	1.1875-18	1.360	34.5	.773	19.6	1.25	31.8	1.031	26.2	1.281	32.5	1.156	29.4	1.328	33.7	1.875	47.6	2.085	53.0
22/23	1.3125-18	1.480	37.6	.800	20.3	1.32	33.5	1.156	29.4	1.351	34.3	1.188	30.2	1.382	35.1	2.000	50.8	2.210	56.1
24/25	1.4375-18	1.730	43.9	.823	20.9	1.38	35.1	1.219	31.0	1.410	35.8	1.250	31.8	1.431	36.3	2.125	54.0	2.335	59.3

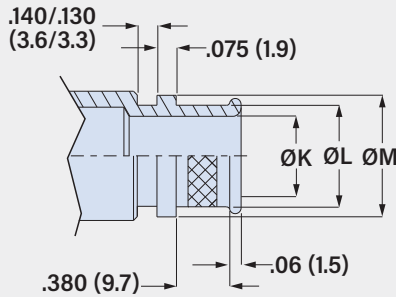
Shell Size	T Max.		U Max.		V Max.		W Max.		X Max.		Y Max.		Z Max.		Profile C Max. Wire Bundle	
	in	mm	in	mm	in	mm	in	mm	in	mm	in	mm	in	mm	in	mm
8/9	.44	11.2	1.635	41.5	.68	17.3	1.575	40.0	.34	8.6	1.915	48.6	.681	17.3	.250	6.4
10/11	.50	12.7	1.695	43.1	.75	19.1	1.635	41.5	.27	6.9	2.075	52.7	.731	18.6	.375	9.5
12/13	.56	14.2	1.765	44.8	.81	20.6	1.705	43.3	.27	6.9	2.075	52.7	.731	18.6	.375	9.5
14/15	.62	15.7	1.795	45.6	.87	22.1	1.735	44.1	.28	7.1	2.145	54.5	.831	21.1	.500	12.7
16/17	.68	17.3	1.895	48.1	.93	23.6	1.835	46.6	.42	10.7	2.195	55.8	.981	24.9	.625	15.9
18/19	.75	19.1	1.955	49.7	1.00	25.4	1.895	48.1	.64	16.3	2.225	56.5	1.181	30.0	.625	15.9
20/21	.82	20.8	2.015	51.2	1.06	26.9	1.955	49.7	.64	16.3	2.225	56.5	1.181	30.0	.625	15.9
22/23	.88	22.4	2.075	52.7	1.12	28.4	2.015	51.2	.61	15.5	2.375	60.3	1.311	33.3	.875	22.2
24/25	.94	23.9	2.135	54.2	1.18	30.0	2.075	52.7	.68	17.3	2.500	63.5	1.431	36.3	1.000	25.4

Series 44 Banding Backshells

for MIL-DTL-38999 Series I and II Connectors

440F*030 Banding Backshell, Shrink Boot

ENTRY SIZE



Entry Size	Shell Sizes	±.015 (0.4) in	±.015 (0.4) mm	±.015 (0.4) in	±.015 (0.4) mm	±.015 (0.4) in	±.015 (0.4) mm
01	08-24	.125	3.2	.250	6.4	.312	7.9
31	08-24	.188	4.8	.312	7.9	.375	9.5
02	08-24	.250	6.4	.375	9.5	.438	11.1
32	10-24	.312	7.9	.438	11.1	.500	12.7
03	10-24	.375	9.5	.500	12.7	.562	14.3
33	12-24	.438	11.1	.562	14.3	.625	15.9
04	12-24	.500	12.7	.625	15.9	.687	17.4
34	14-24	.562	14.3	.688	17.5	.750	19.1
05	14-24	.625	15.9	.750	19.1	.812	20.6
35	16-24	.688	17.5	.812	20.6	.875	22.2
06	16-24	.750	19.1	.875	22.2	.938	23.8
36	18-24	.812	20.6	.938	23.8	1.000	25.4

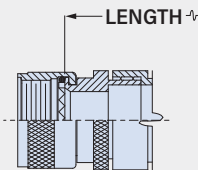
MAXIMUM ENTRY SIZE

If the selected entry size exceeds the maximum size in this table, the backshell will have a front adapter. This is called a **Style 2** backshell.

△ Profile G backshells are not available with entry sizes larger than shown in table.

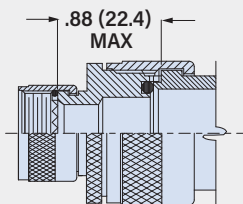
Shell Size	Max. Entry Size	Shell Size	Max. Entry Size
8/9	02	18/19	07
10/11	03	20/21	08
12/13	04	22/23	09
14/15	05	24/25	10
16/17	06		

Style 2 Straight Backshell



For Style 2 straight backshells, the minimum length code increases from 3 (1 1/2 inches) to 4 (2 inches).

Style 2 45° and 90° Backshells



For Style 2 45° and 90° backshells, the length increases by .88 inches.

SHRINK BOOT

Optional heatshrink boot provides cable strain relief and environmental protection. Type 1 high-performance semi-rigid elastomer resists fuels and oils and withstands temperature extremes. Available with W1 hot melt adhesive pre-coat. Operating temperature range -75 to +150 °C (no adhesive), -55 to +125 °C (with W1 adhesive).

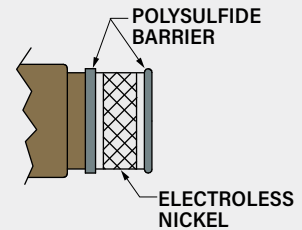


Entry Sizes	Shrink Boot P/N	Adhesive Lined Shrink Boot P/N
01-31	770-003S111	770-003S111W1
02-32	770-003S112	770-003S112W1
03	770-001S103	770-001S103W1
33-35	770-001S104	770-001S104W1
06-37	770-001S105	770-001S105W1
08-38	770-001S106	770-001S106W1
09-12	770-001S107	770-001S107W1
13-14	770-001S108	770-001S108W1
15-16	770-001S109	770-001S109W1

POLYSULFIDE

Optional selective electroless nickel plating on shield termination area and polysulfide dielectric barrier prevents galvanic mismatch between nickel-coated braid shield and backshell.

△ Plating codes NF, ZR and TZ only



BAND

Optional SST band strap provides fast, cost-effective and highly reliable termination of braided metallic shielding. The Band-Master ATS® Advanced Cable Shield Termination System is the overwhelming favorite throughout the military aerospace and defense industries, providing excellent static loading and corrosion resistance in electrical wire interconnect systems.



Band 601-041

Banding Tool 601-100