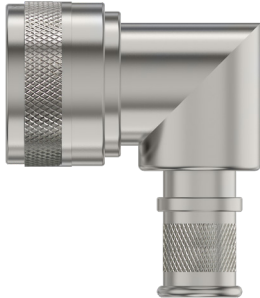




Series 44 Banding Backshells

for AS50151 Crimp, M26482 Series II, M83723 Series III, AS95234

440A*030 Banding Backshell, Shrink Boot



Spin coupling. Band-Master ATS® shield termination. 440A*030 banding backshell fits AS50151 crimp (MS3450), AS95234, MIL-DTL-26482 Series II, MIL-DTL-83723 Series III connectors. Terminate cable braid shield to backshell with optional band strap. Optional shrink boot adds strain relief and environmental protection. Aluminum or stainless steel.

Adapter Code A
AS50151 crimp, AS95234, MIL-DTL-26482 Ser. II, MIL-DTL-83723 Ser. III

PROFILE SELECTION GUIDE

<p>S Straight</p>	<p>C 90°</p> <p>Low Profile Split</p>
<p>D 90°</p> <p>Split</p>	<p>F 45°</p> <p>Split</p>
<p>H 45°</p> <p>Cut and Weld</p>	<p>J 90°</p> <p>Cut and Weld</p>
<p>M 45°</p> <p>Full Radius</p>	<p>N 90°</p> <p>Full Radius</p>

PART NUMBER

	440AS030	M	16	05-	3	K	P	T
Base P/N	Base Part No.	Profile	Shell Size					
	440AS030	S	Str. 08-36					
	440AC030	C	90° 08-24					
	440AD030	D	90° 08-24					
	440AF030	F	45° 08-24					
	440AH030	H	45° 08-36					
	440AJ030	J	90° 08-36					
	440AM030	M	45° 08-36					
	440AN030	N	90° 08-36					

Material/Finish	<p>M Alum/ Electroless Nickel</p> <p>MT Alum/ Nickel-PTFE</p> <p>NF Alum/ Olive Drab Cadmium</p> <p>ZR Alum/ Black Zinc-Nickel</p> <p>TZ Alum/ Tin-Zinc</p> <p>ZI SST/ Passivated (Profiles H, J, M, N, S only)</p>
Shell Size	08 10 12 14 16 18 20 22 24 28 32 36

Entry Size*	Size	Inside Dia.	Shell Sizes*	Size	Inside Dia.	Shell Sizes*
	01	.125 (3.2)	08-36	07	.875 (22.2)	20-36
	31	.188 (4.8)	08-36	37	.938 (23.8)	22-36
	02	.250 (6.4)	08-36	08	1.000 (25.4)	22-36
	32	.312 (7.9)	10-36	38	1.062 (27.0)	24-36
	03	.375 (9.5)	10-36	09	1.125 (28.6)	24-36
	33	.438 (11.1)	12-36	10	1.250 (31.8)	28-36
	04	.500 (12.7)	12-36	11	1.375 (34.9)	28-36
	34	.562 (14.3)	14-36	12	1.500 (38.1)	32-36
	05	.625 (15.9)	16-36	13	1.625 (41.3)	32-36
	35	.688 (17.5)	16-36	14	1.750 (44.5)	36
	06	.750 (19.1)	18-36	15	1.875 (47.6)	-
	36	.812 (20.6)	18-36	16	2.000 (50.8)	-

* If selected entry size exceeds shell size range, a Style 2 transition adapter will be included. See Maximum Entry Size for details. ⚠ Profile G entry size cannot exceed shell size range listed in table.

Length	<p>3 1.5 inches Applies to Profile S only.</p> <p>4 2.0 inches If Entry Size is greater than</p> <p>5 2.5 inches "Maximum Entry Size" (see table),</p> <p>6 3.0 inches then 2 inch minimum applies.</p>
---------------	---

Band	<p>Omit if not required</p> <p>K Pre-Coiled Band Included With Backshell</p>
-------------	---

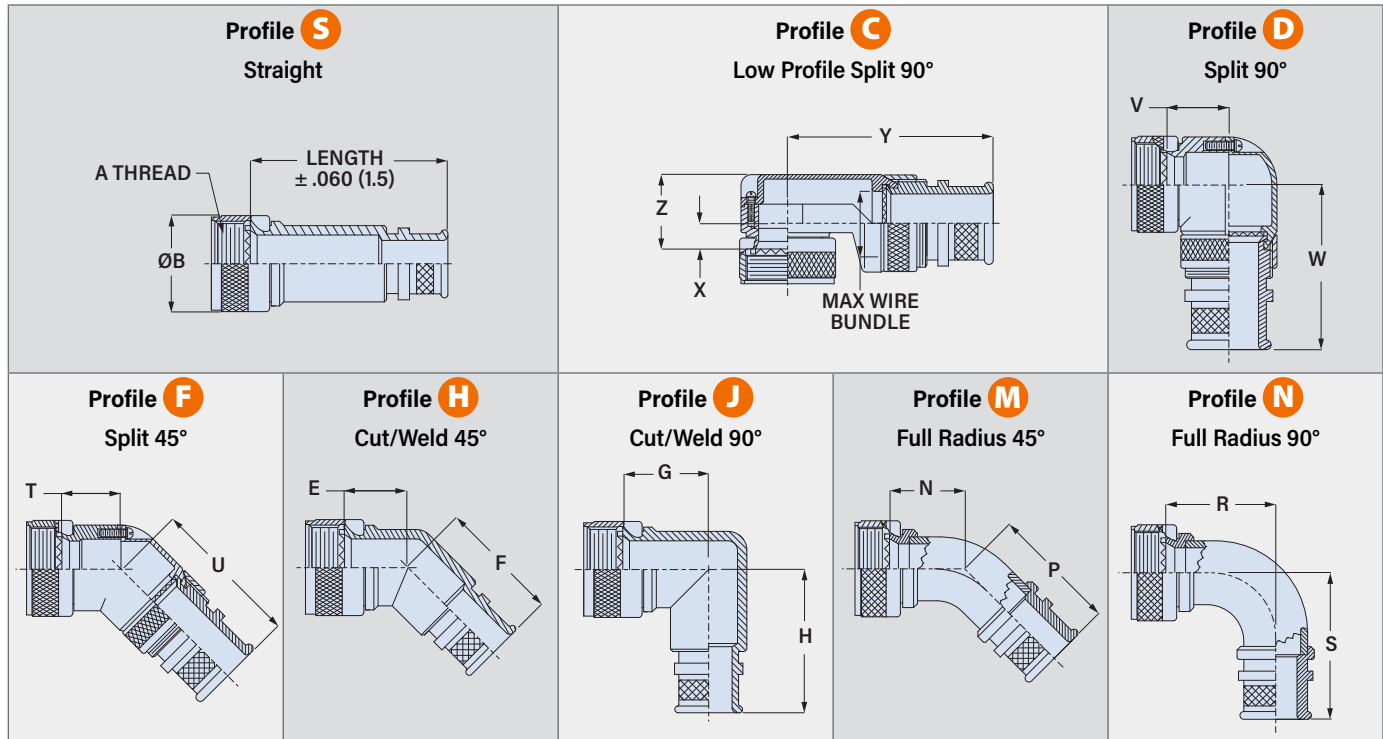
Polysulfide	<p>Omit if not required. Applies to Plating Codes NF, ZR, TZ only.</p> <p>P Nickel Plated Shield Termination Area with Polysulfide Barrier</p>
--------------------	---

Shrink Boot	<p>Omit if not required</p> <p>T Shrink Boot Included With Backshell</p> <p>TI Adhesive-lined Shrink Boot Included With Backshell</p>
--------------------	---

Series 44 Banding Backshells

for AS50151 Crimp, M26482 Series II, M83723 Series III, AS95234

440A*030 Banding Backshell, Shrink Boot



Shell Size	A Thread Class 2B	øB Max.		E Max.		F Max.		G Max.		H Max.		N Max.		P Max.		R Max.		S Max.	
		in	mm	in	mm	in	mm	in	mm	in	mm	in	mm	in	mm	in	mm	in	mm
08	0.500-20 UNF	.65	16.5	.531	13.5	.94	23.9	.639	16.2	1.110	28.2	.812	20.6	1.017	25.8	1.125	28.6	1.335	33.9
10	0.625-24 UNEF	.77	19.6	.594	15.1	1.00	25.4	.664	16.9	1.140	29.0	.875	22.2	1.071	27.2	1.250	31.8	1.460	37.1
12	0.750-20 UNEF	.94	23.9	.618	15.7	1.05	26.7	.688	17.5	1.160	29.5	.938	23.8	1.121	28.5	1.375	34.9	1.585	40.3
14	0.875-20 UNEF	1.07	27.2	.656	16.7	1.09	27.7	.705	17.9	1.190	30.2	1.000	25.4	1.175	29.8	1.500	38.1	1.710	43.4
16	1.000-20 UNEF	1.21	30.7	.688	17.5	1.15	29.2	.732	18.6	1.210	30.7	1.062	27.0	1.224	31.1	1.625	41.3	1.835	46.6
18	1.0625-18 UNEF	1.23	31.2	.748	19.0	1.19	30.2	.803	20.4	1.221	31.0	1.094	27.8	1.274	32.4	1.750	44.5	1.960	49.8
20	1.1875-18 UNEF	1.36	34.5	.773	19.6	1.25	31.8	1.031	26.2	1.281	32.5	1.156	29.4	1.328	33.7	1.875	47.6	2.085	53.0
22	1.3125-18 UNEF	1.48	37.6	.800	20.3	1.32	33.5	1.156	29.4	1.351	34.3	1.188	30.2	1.382	35.1	2.000	50.8	2.210	56.1
24	1.4375-18 UNEF	1.73	43.9	.823	20.9	1.38	35.1	1.219	31.0	1.410	35.8	1.250	31.8	1.431	36.3	2.125	54.0	2.335	59.3
28	1.750-18 UNS	1.97	50.0	1.041	26.4	1.50	38.1	1.281	32.5	1.531	38.9	1.344	34.1	1.811	46.0	2.375	60.3	2.835	72.0
32	2.000-18 UNS	2.22	56.4	1.092	27.7	1.62	41.1	1.593	40.5	1.651	41.9	1.514	38.5	1.981	50.3	2.675	67.9	2.935	74.5
36	2.250-16 UN	2.47	62.7	1.136	28.9	1.75	44.5	1.718	43.6	1.781	45.2	1.514	38.5	1.981	50.3	2.785	70.7	2.950	74.9

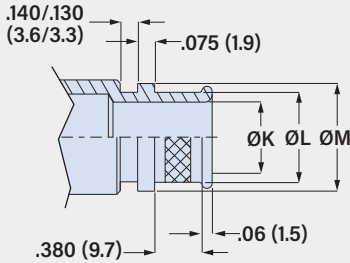
Shell Size	T Max.		U Max.		V Max.		W Max.		X Max.		Y Max.		Z Max.		Profile C Max. Wire Bundle	
	in	mm	in	mm	in	mm	in	mm	in	mm	in	mm	in	mm	in	mm
08	.44	11.2	1.635	41.5	.68	17.3	1.575	40.0	.34	8.6	1.915	48.6	.681	17.3	.250	6.4
10	.50	12.7	1.695	43.1	.75	19.1	1.635	41.5	.27	6.9	2.075	52.7	.731	18.6	.375	9.5
12	.56	14.2	1.765	44.8	.81	20.6	1.705	43.3	.27	6.9	2.075	52.7	.731	18.6	.375	9.5
14	.62	15.7	1.795	45.6	.87	22.1	1.735	44.1	.28	7.1	2.145	54.5	.831	21.1	.500	12.7
16	.68	17.3	1.895	48.1	.93	23.6	1.835	46.6	.42	10.7	2.195	55.8	.981	24.9	.625	15.9
18	.75	19.1	1.955	49.7	1.00	25.4	1.895	48.1	.64	16.3	2.225	56.5	1.181	30.0	.625	15.9
20	.82	20.8	2.015	51.2	1.06	26.9	1.955	49.7	.64	16.3	2.225	56.5	1.181	30.0	.625	15.9
22	.88	22.4	2.075	52.7	1.12	28.4	2.015	51.2	.61	15.5	2.375	60.3	1.311	33.3	.875	22.2
24	.94	23.9	2.135	54.2	1.18	30.0	2.075	52.7	.68	17.3	2.500	63.5	1.431	36.3	1.000	25.4

Series 44 Banding Backshells

for AS50151 Crimp, M26482 Series II, M83723 Series III, AS95234

440A*030 Banding Backshell, Shrink Boot

ENTRY SIZE



Entry Size	Shell Sizes	±.015(0.4) in	±.015(0.4) mm	±.015(0.4) in	±.015(0.4) mm	±.015(0.4) in	±.015(0.4) mm
01	08-36	.125	3.2	.250	6.4	.312	7.9
31	08-36	.188	4.8	.312	7.9	.375	9.5
02	08-36	.250	6.4	.375	9.5	.438	11.1
32	10-36	.312	7.9	.438	11.1	.500	12.7
03	10-36	.375	9.5	.500	12.7	.562	14.3
33	12-36	.438	11.1	.562	14.3	.625	15.9
04	12-36	.500	12.7	.625	15.9	.687	17.4
34	14-36	.562	14.3	.688	17.5	.750	19.1
05	16-36	.625	15.9	.750	19.1	.812	20.6
35	16-36	.688	17.5	.812	20.6	.875	22.2
06	18-36	.750	19.1	.875	22.2	.938	23.8
36	18-36	.812	20.6	.938	23.8	1.000	25.4

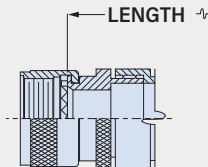
MAXIMUM ENTRY SIZE

If the selected entry size exceeds the maximum size in this table, the backshell will have a front adapter. This is called a Style 2 backshell.

Profile C backshells are not available with entry sizes larger than shown in table.

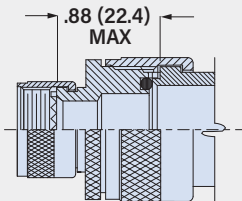
Shell Size	Max. Entry Size	Shell Size	Max. Entry Size
08	02	20	07
10	03	22	08
12	04	24	09
14	34	28	11
16	35	32	13
18	06	36	14

Style 2 Straight Backshell



For Style 2 straight backshells, the minimum length code increases from 3 (1 1/2 inches) to 4 (2 inches).

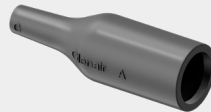
Style 2 45° and 90° Backshells



For Style 2 45° and 90° backshells, the length increases by .88 inches.

SHRINK BOOT

Optional heatshrink boot provides cable strain relief and environmental protection. Type 1 high-performance semi-rigid elastomer resists fuels and oils and withstands temperature extremes. Available with W1 hot melt adhesive pre-coat. Operating temperature range -75 to +150 °C (no adhesive), -55 to +125 °C (with W1 adhesive).



Entry Sizes	Shrink Boot P/N	Adhesive Lined Shrink Boot P/N
01-31	770-003S111	770-003S111W1
02-32	770-003S112	770-003S112W1
03	770-001S103	770-001S103W1
33-35	770-001S104	770-001S104W1
06-37	770-001S105	770-001S105W1
08-38	770-001S106	770-001S106W1
09-12	770-001S107	770-001S107W1
13-14	770-001S108	770-001S108W1
15-16	770-001S109	770-001S109W1

BAND

Optional SST band strap provides fast, cost-effective and highly reliable termination of braided metallic shielding. The Band-Master ATS® Advanced Cable Shield Termination System is the overwhelming favorite throughout the military aerospace and defense industries, providing excellent static loading and corrosion resistance in electrical wire interconnect systems.



Band 601-041

Banding Tool 601-100

POLYSULFIDE

Optional selective electroless nickel plating on shield termination area and polysulfide dielectric barrier prevents galvanic mismatch between nickel-coated braid shield and backshell.

Plating codes NF, ZR and TZ only

