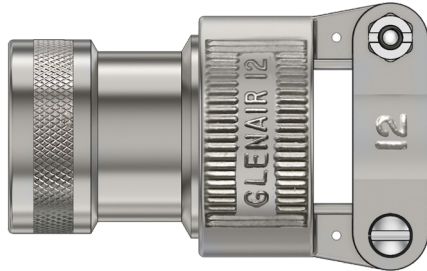


Series 36 Strain Relief Backshells

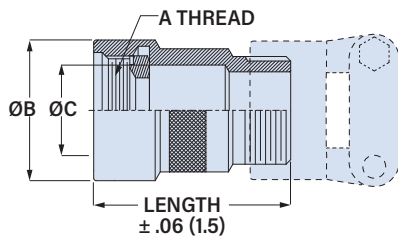
for AS50151 Crimp, M26482 Series II, M83723 Series III, AS95234

360AS002 Backshell, Strain Relief, Direct Coupling



Adapter Code **A**

AS50151 crimp, AS95234, MIL-DTL-26482
Ser. II, MIL-DTL-83723 Ser. III



Shell Size	A Thread Class 2B	øB Max in	øB Max mm	øC Max in	øC Max mm	Max Entry Size
08	0.500-20 UNF	.65	16.5	.36	9.1	04
10	0.625-24 UNEF	.77	19.6	.49	12.4	06
12	0.750-20 UNEF	.97	24.6	.63	16.0	10
14	0.875-20 UNEF	1.09	27.7	.75	19.1	12
16	1.000-20 UNEF	1.22	31.0	.86	21.8	12
18	1.0625-18 UNEF	1.22	31.0	.93	23.6	16
20	1.1875-18 UNEF	1.34	34.0	1.05	26.7	16
22	1.3125-18 UNEF	1.47	37.3	1.18	30.0	16
24	1.4375-18 UNEF	1.59	40.4	1.30	33.0	20
28	1.750-18 UNS	1.97	50.0	1.61	40.9	24
32	2.000-18 UNS	2.28	57.9	1.86	47.2	28
36	2.250-16 UN	2.53	64.3	2.11	53.6	32
40	2.500-16 UN	2.78	70.6	2.36	59.9	32

Heavy duty saddles. 360AS002 backshell fits AS50151 crimp, AS95234, MIL-DTL-26482 Series II, MIL-DTL-83723 Series III connectors. Direct coupling, nonenvironmental. Heavy duty die cast saddle clamp has stainless steel telescoping fillister head screws and lockwashers. Available in aluminum or stainless steel.

PART NUMBER

360AS002 M 12 06 H 3

Base P/N **360AS002**

Material/Finish
C Alum/ Black Anodize
M Alum/ Electroless Nickel
MT Alum/ Nickel-PTFE
NF Alum/ Olive Drab Cadmium
ZR Alum/ Black Zinc-Nickel
TZ Alum/ Tin-Zinc
ZI SST/ Passivated

Shell Size **08 10 12 14 16 18 20 22 24 28 32 36 40**

Entry Size*	Max Cable Dia.	Shell Size*	Entry Size	Max Cable Dia.	Shell Size*
04	.312 (7.9)	08-40	16	.937 (23.8)	18-40
06	.437 (11.1)	10-40	20	1.250 (31.8)	24-40
08	.562 (14.3)	12-40	24	1.375 (34.9)	28-40
10	.625 (15.9)	12-40	28	1.625 (41.3)	32-40
12	.750 (19.1)	14-40	32	1.875 (47.6)	36-40

* If selected entry size exceeds shell size range, a Style 2 transition adapter will be included. See Maximum Entry Size for details.

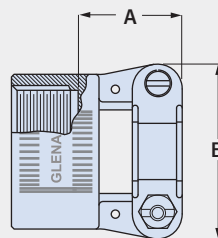
Strain Relief Type **H** Saddle Clamp

Length

3 1.5 inches
4 2.0 inches
6 3.0 inches
8 4.0 inches

If Entry Size is greater than "Max Entry Size" (see table at left), then 2 inch minimum applies.

STRAIN RELIEF DIMENSIONS



Entry Size	A Max in	A Max mm	B Max in	B Max mm	Cable Range			
					Min in	Min mm	Max in	Max mm
04	.780	19.8	.957	24.3	.125	3.2	.312	7.9
06	.780	19.8	1.145	29.1	.250	6.4	.437	11.1
08	.780	19.8	1.332	33.8	.312	7.9	.562	14.3
10	.780	19.8	1.332	33.8	.350	8.9	.625	15.9
12	.811	20.6	1.551	39.4	.500	12.7	.750	19.1
16	.905	23.0	1.770	45.0	.625	15.9	.937	23.8
20	1.092	27.7	2.113	53.7	.875	22.2	1.250	31.8
24	1.124	28.5	2.363	60.0	1.000	25.4	1.375	34.9
28	1.399	35.5	2.770	70.4	1.250	31.8	1.625	41.3
32	1.399	35.5	3.020	76.7	1.437	36.5	1.875	47.6

MAXIMUM ENTRY SIZE

If the selected entry size exceeds the maximum size shown in table, the backshell will include a Style 2 front adapter. **The minimum length code increases from 3 (1 ½ inches) to 4 (2 inches).**

