

MIL-DTL-38999 Series III Type

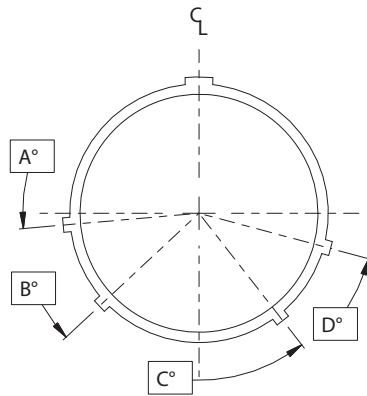
233-265 Receptacles with removable crimp contacts

HERMETIC CONNECTORS

Part Number Development							
Sample Part Number	233-265	-H2	Z1	17-26	P	N	02
Series / Basic Part No.	Series 23 SuperNine Hermetic						
Connector Style	H7 = Jam-Nut Mount with Accessory Threads BH7 = Jam-Nut Mount with Integral Banding Porch DH7 = Dual O-ring Jam-Nut Mount with Accessory Threads DBH7 = Dual O-ring Jam-Nut Mount with Integral Banding Porch						
Finish*	Z1 = CRES, Passivated ZL = CRES, Nickel Finish						
Shell Size/Insert Arrangement*	Per MIL-DTL-38999/MIL-STD-1560						
Contact Style	P = Pin S = Socket						
Polarization*	A, B, C, D, E, N = Normal						
Panel Thickness	01 = .200 inches max 02 = .375 inches max						

*Refer to Section A for standard insert arrangements and pages D-8 thru D-10 for special shielded contact arrangements, consult factory for additional options
Modification codes may be added directly to the end of any valid part number

Minor Keyway Position					
Shell Sizes	POS	A°	B°	C°	D°
9	N	105	140	215	265
	A	102	132	248	320
	B	80	118	230	312
	C	35	140	205	275
	D	64	155	234	304
11 13 15	E	91	131	197	240
	N	95	141	208	236
	A	113	156	182	292
	B	90	145	195	252
	C	53	156	220	255
17 19 21 23 25	D	119	146	176	298
	E	51	141	184	242
	N	80	142	196	293
	A	135	170	200	310
	B	49	169	200	244
	C	66	140	200	257
	D	62	145	180	280
	E	79	153	197	272



FACE VIEW - RECEPTACLE

Material/finish:

- Shell receptacle, jam nut - 300 series CRES/see part number development
- Pin contact - alloy 52/gold plated
- Socket contact - copper alloy/gold plated
- Insulator - fused vitreous glass
- Insulators - high grade rigid dielectric
- Seals - fluorosilicone

NOTES

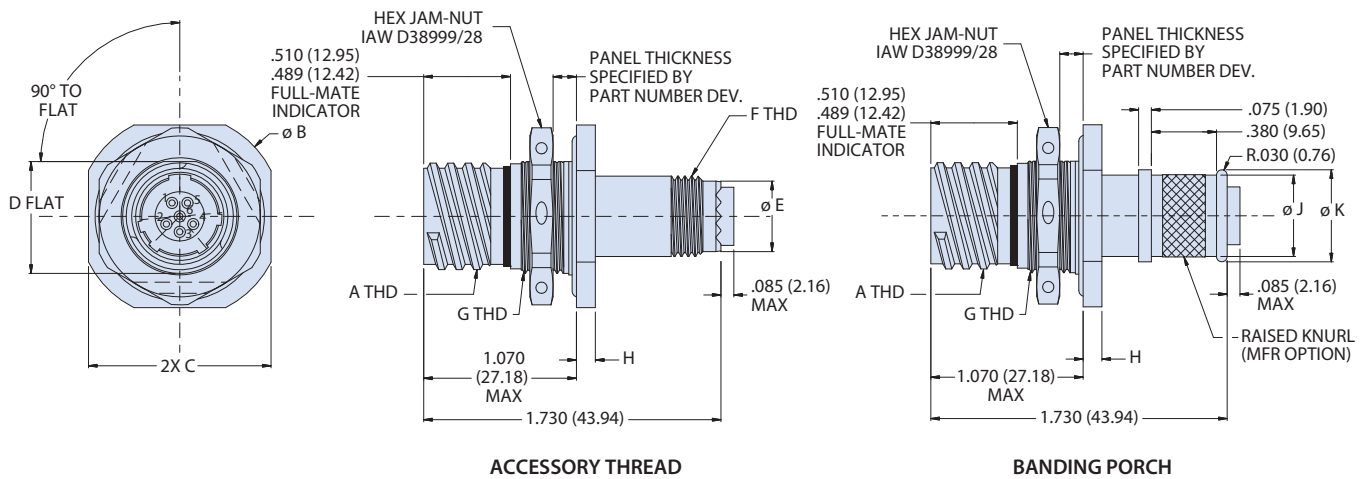
1. Hermeticity: $<1 \times 10^{-7}$ ccHe/sec @ 1 ATM, delta pressure
2. Crimp removable socket contacts to conform to SAE AS39029/57-359 (# 12), AS39029/57-358 (# 16), AS39029/57-357 (# 20) and AS39029/57-354 (# 22D) or Glenair 809-002 socket (#23) (supplied loose).

DWV Voltage Levels At Sea Level	
SERVICE RATING	VOLTAGE AC RMS 60HZ
M	1300 VAC
I	1800 VAC
II	2300 VAC
N	1000 VAC

MIL-DTL-38999 Series III Type

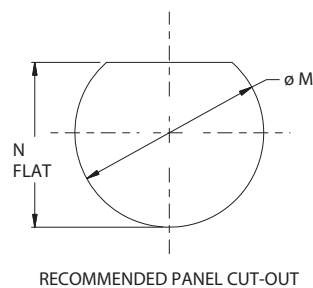
233-265 Receptacles with removable crimp contacts

233-265-H7 AND BH7 JAM NUT RECEPTACLE WITH ACCESSORY THREAD OR BANDING PORCH



Dimensions											
SHELL SIZE	SHELL SIZE CODE	A THREAD -0.1P-0.3L-TS	ØB	C A/F ±.015	D FLAT ±0.016	ØE +.003	G THREAD ISO METRIC	F THREAD ISO METRIC	H ±.008	ØJ	ØK
9	A	.625	1.500 (38.10)	1.375 (34.93)	1.062 (26.97)	.413 (10.49)	M17 X 1.0-6G	M12 X 1.0-6G	.106 (2.69)	.475 (12.07)	.538 (13.67)
11	B	.750	1.625 (41.28)	1.500 (38.10)	1.252 (31.80)	.531 (13.49)	M20 X 1.0-6G	M15 X 1.0-6G	.106 (2.69)	.600 (15.24)	.662 (16.81)
13	C	.875	1.752 (44.50)	1.626 (41.30)	1.374 (34.90)	.650 (16.51)	M25 X 1.0-6G	M18 X 1.0-6G	.106 (2.69)	.700 (17.78)	.762 (19.35)
15	D	1.000	1.937 (49.20)	1.811 (46.00)	1.500 (38.10)	.807 (20.50)	M28 X 1.0-6G	M22 X 1.0-6G	.106 (2.69)	.835 (21.21)	.898 (22.81)
17	E	1.1875	2.063 (52.40)	1.937 (49.20)	1.626 (41.30)	.925 (23.50)	M32 X 1.0-6G	M25 X 1.0-6G	.106 (2.69)	.960 (24.38)	1.022 (25.96)
19	F	1.250	2.189 (55.60)	2.063 (52.40)	1.811 (46.00)	1.043 (26.49)	M35 X 1.0-6G	M28 X 1.0-6G	.138 (3.51)	1.062 (26.97)	1.125 (28.58)
21	G	1.375	2.311 (58.70)	2.189 (55.60)	1.937 (49.20)	1.161 (29.49)	M38 X 1.0-6G	M31 X 1.0-6G	.138 (3.51)	1.188 (30.18)	1.250 (31.75)
23	H	1.500	2.500 (63.50)	2.300 (58.42)	2.063 (52.40)	1.279 (32.49)	M41 X 1.0-6G	M34 X 1.0-6G	.138 (3.51)	1.275 (32.39)	1.338 (33.99)
25	J	1.625	2.625 (66.68)	2.400 (60.96)	2.189 (55.60)	1.397 (35.48)	M44 X 1.0-6G	M37 X 1.0-6G	.138 (3.51)	1.475 (37.47)	1.538 (39.07)

Panel Cut-out			
SHELL SIZE	SHELL SIZE CODE	ØM ±.005	N FLAT ±.005 EX SIZE 9
9	A	.703 (17.86)/.693 (17.60)	.661 (16.79)/.655 (16.64)
11	B	.835 (21.21)/.825 (20.96)	.771 (19.58)/.761 (19.33)
13	C	1.020 (25.91)/1.010 (25.65)	.955 (24.26)/.945 (24.00)
15	D	1.145 (29.08)/1.135 (28.83)	1.085 (27.56)/1.075 (27.30)
17	E	1.270 (32.26)/1.260 (32.00)	1.210 (30.73)/1.200 (30.48)
19	F	1.395 (35.43)/1.385 (35.18)	1.335 (33.91)/1.325 (33.65)
21	G	1.520 (38.61)/1.510 (38.35)	1.460 (37.08)/1.450 (36.83)
23	H	1.645 (41.78)/1.635 (41.53)	1.585 (40.26)/1.575 (40.00)
25	J	1.770 (44.96)/1.760 (44.70)	1.710 (43.43)/1.700 (43.18)

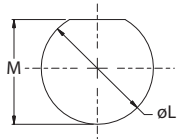
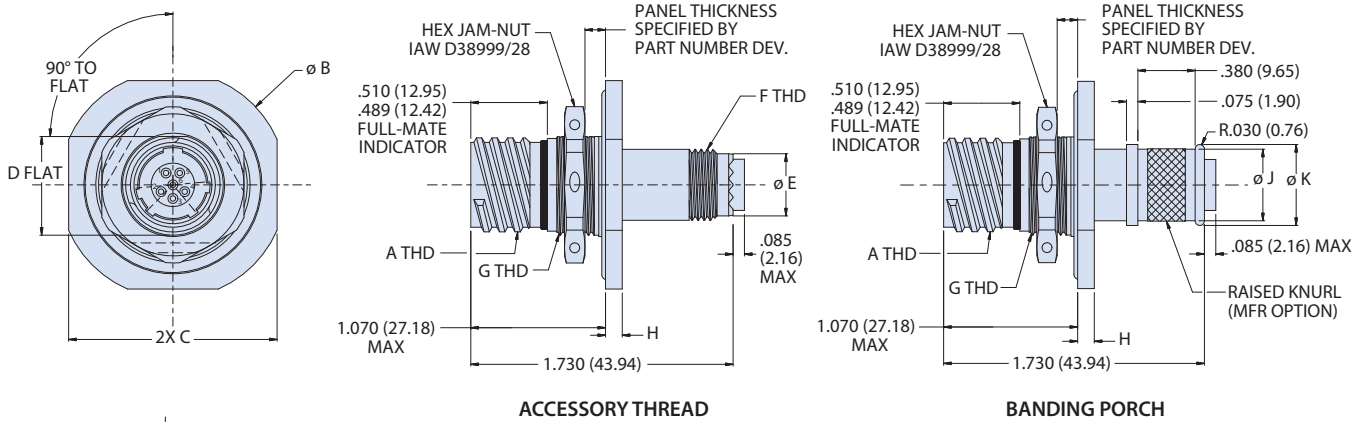


MIL-DTL-38999 Series III Type

233-265 Receptacles with removable crimp contacts

HERMETIC CONNECTORS

233-265-DH7 AND DBH7 JAM-NUT MOUNT RECEPTACLE



Recommended Panel Cutout

Panel Cutout Dimensions		
SHELL SIZE	ø L ±.005	M ±.005 EX SZ 9
9	0.698 (17.73)	.661/.656 (16.79/ 16.66)
11	0.830 (21.08)	0.766 (19.46)
13	1.015 (25.78)	0.950 (24.13)
15	1.140 (28.96)	1.080 (27.43)
17	1.265 (32.13)	1.205 (30.61)
19	1.390 (35.31)	1.330 (33.78)
21	1.515 (38.48)	1.455 (36.96)
23	1.640 (41.66)	1.580 (40.13)
25	1.765 (44.83)	1.705 (43.31)

Dimensions										
SHELL SIZE	A THREAD -0.1P-0.3L-TS	ø B	C A/F ±.015	D FLAT ±.005	ø E ±.003	F THREAD ISO METRIC	G THREAD ISO METRIC	H ±.008	ø J	ø K
9	0.625 (15.88)	1.500 (38.10)	1.375 (34.93)	0.650 (16.51)	.413 (10.49)	M12 X 1.0-6G	M17 X 1.0-6g	0.106 (2.69)	0.475 (12.07)	0.538 (13.67)
11	0.750 (19.05)	1.625 (41.28)	1.500 (38.10)	0.750 (19.05)	.513 (13.03)	M15 X 1.0-6G	M20 X 1.0-6g	0.106 (2.69)	0.600 (15.24)	0.662 (16.81)
13	0.875 (22.23)	1.752 (44.50)	1.626 (41.30)	0.937 (23.80)	.650 (16.51)	M18 X 1.0-6G	M25 X 1.0-6g	0.106 (2.69)	0.700 (17.78)	0.762 (19.35)
15	1.000 (25.40)	1.937 (49.20)	1.811 (46.00)	1.061 (26.95)	.807 (20.50)	M22 X 1.0-6G	M28 X 1.0-6g	0.106 (2.69)	0.835 (21.21)	0.898 (22.81)
17	1.187 (30.15)	2.063 (52.40)	1.937 (49.20)	1.186 (30.12)	.925 (23.50)	M25 X 1.0-6G	M32 X 1.0-6g	0.106 (2.69)	0.960 (24.38)	1.022 (25.96)
19	1.250 (31.75)	2.189 (55.60)	2.063 (52.40)	1.311 (33.30)	1.043 (26.49)	M28 X 1.0-6G	M35 X 1.0-6g	0.138 (3.51)	1.062 (26.97)	1.125 (28.58)
21	1.375 (34.92)	2.311 (58.70)	2.189 (55.60)	1.436 (36.47)	1.161 (29.49)	M31 X 1.0-6G	M38 X 1.0-6g	0.138 (3.51)	1.188 (30.18)	1.250 (31.75)
23	1.500 (38.10)	2.500 (63.50)	2.300 (58.42)	1.561 (39.65)	1.279 (32.49)	M34 X 1.0-6G	M41 X 1.0-6g	0.138 (3.51)	1.275 (32.39)	1.338 (33.99)
25	1.625 (41.28)	2.625 (66.68)	2.400 (60.96)	1.686 (42.82)	1.397 (35.48)	M37 X 1.0-6G	M44 X 1.0-6g	0.138 (3.51)	1.475 (37.47)	1.538 (39.07)