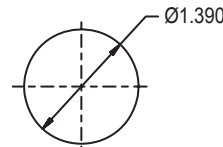
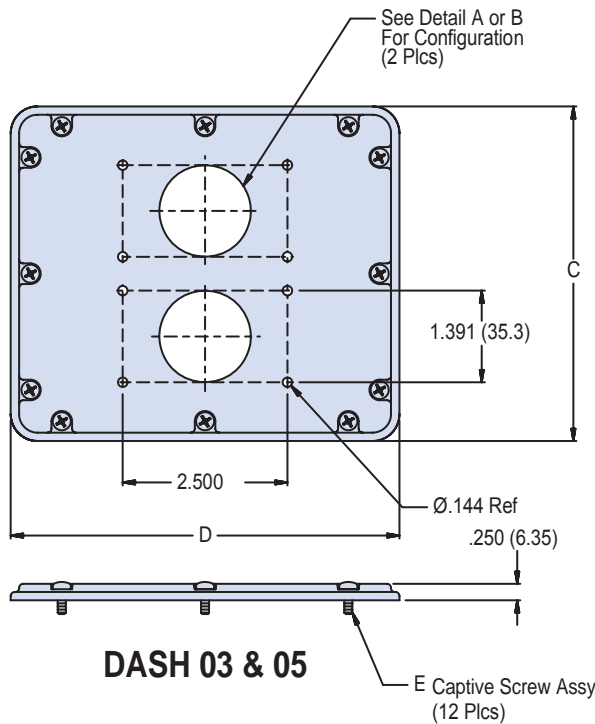
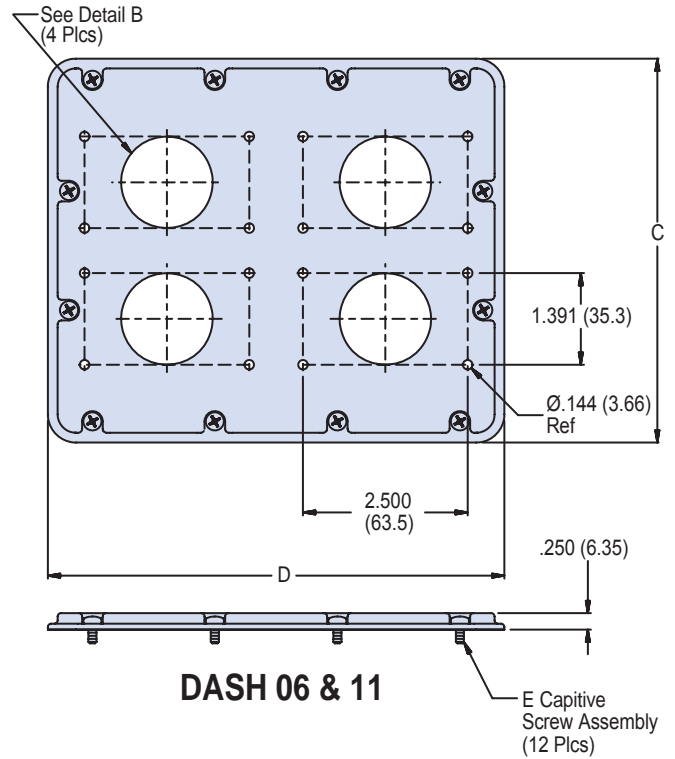
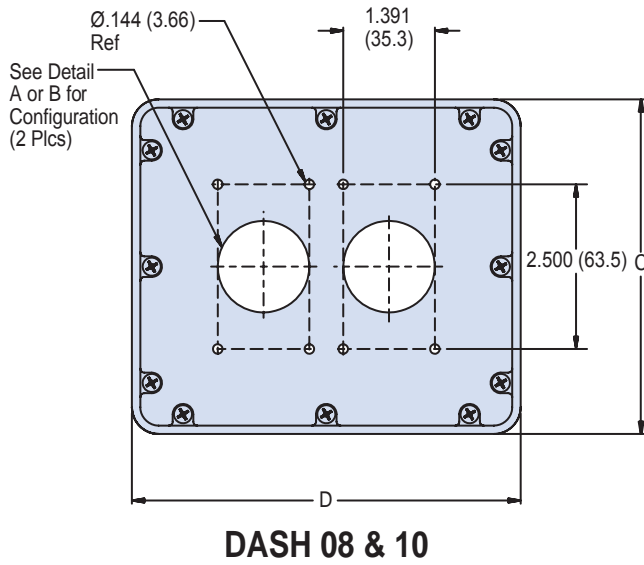
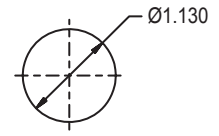


E

**147-065XMS-\*\***  
 (See Table I for NSN Designator)  
 Replacement Lid Assembly  
 for Glenair Composite Box Enclosures

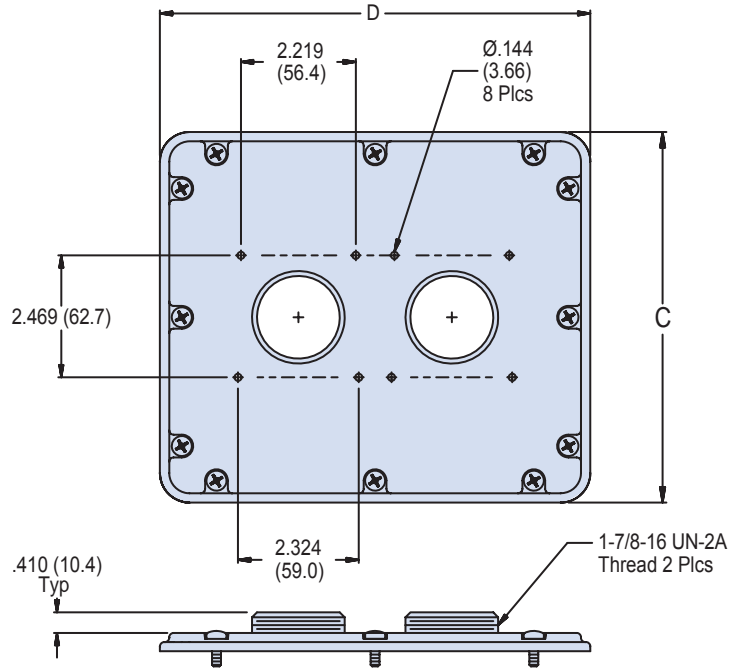
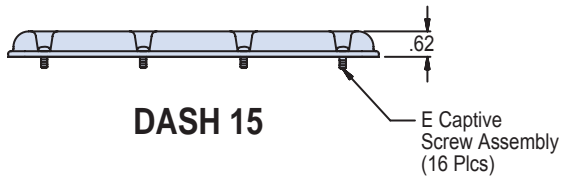
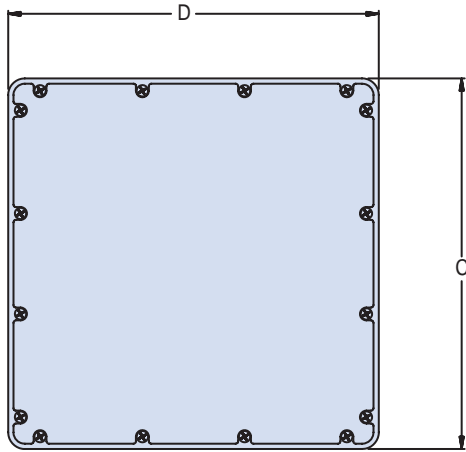


**DETAIL A**  
 115 VAC Receptacle,  
 630-038XO-02 Cover Assembly



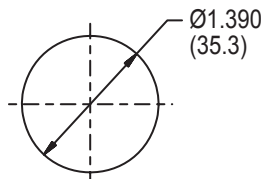
**DETAIL B**  
 227-059XO-04 Sound Power Jack,  
 630-038XO-02 Cover Assembly



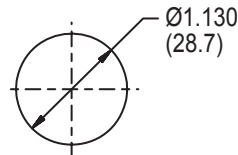


**DASH 16**

**E**



**DETAIL A**  
 115 VAC Receptacle,  
 630-038XO-02 Cover Assembly

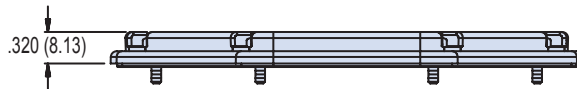
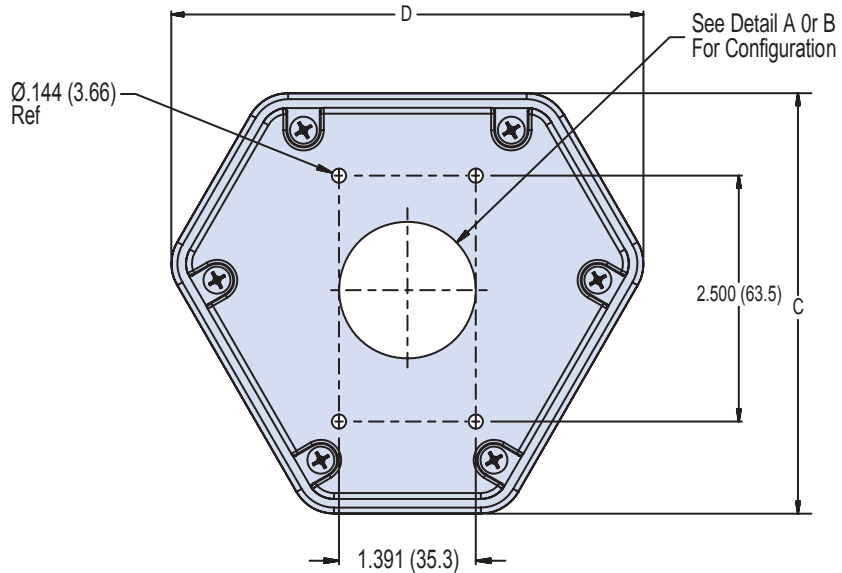


**DETAIL B**  
 227-059XO-04 Sound Power Jack,  
 630-038XO-02 Cover Assembly

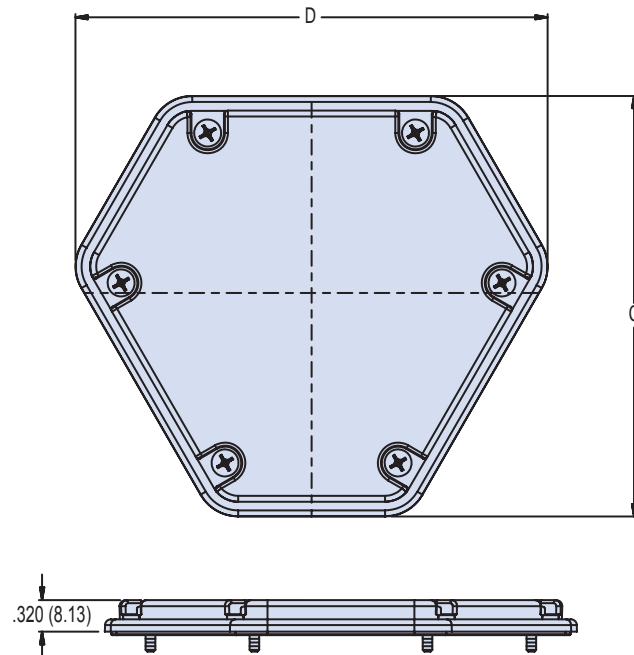
**147-065XMS-\*\***  
**(See Table I for NSN Designator)**  
**Replacement Lid Assembly**  
**for Glenair Composite Box Enclosures**



Junction  
Boxes

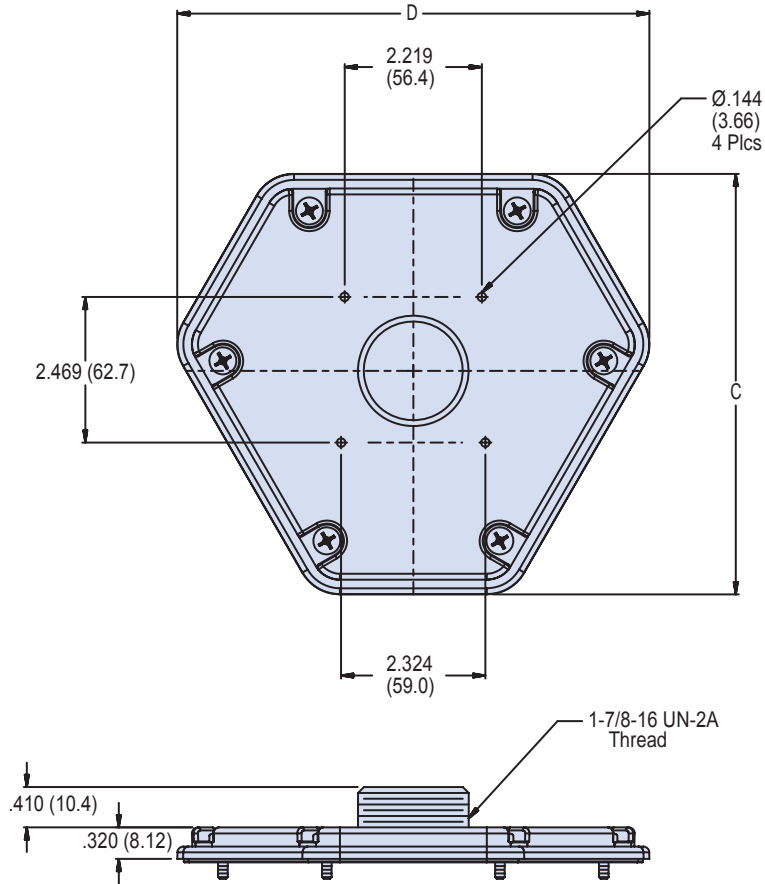


**DASH 12 AND 13**



**DASH 14**

**E**



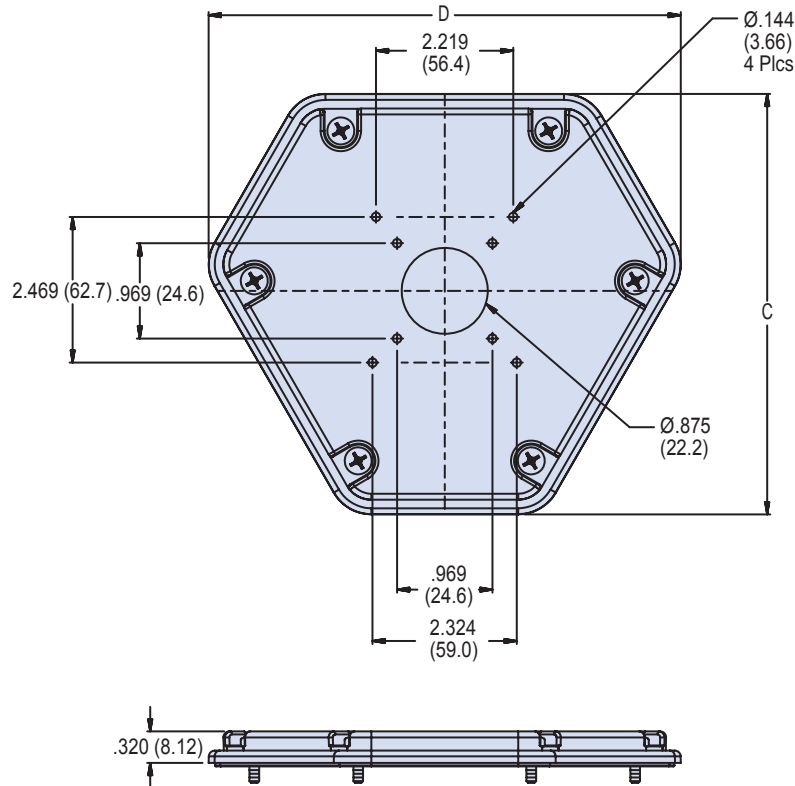
**DASH 18**

**TABLE II: Finish**

Symbol	Description
<b>XMS</b>	Internal Surfaces - Electroless Nickel Exterior Surfaces - Unplated Light Grey Color
<b>XO</b>	No Plating

**E**

**147-065XMS-\*\***  
**(See Table I for NSN Designator)**  
**Replacement Lid Assembly**  
**for Glenair Composite Box Enclosures**



**DASH 19**

**APPLICATION NOTES**

1. Assembly to be bagged and tagged.
2. Color may be subject to fading, however UV exposure will not affect material physical properties.
3. Assembly is similar to symbol part numbers and require installation in accordance with NAVSEA drawing 803-6983506.
4. Material / Finish:  
 Cover - Thermoplastic grey color/see Table II.  
 Hardware - 316 SST/passivate.  
 Elastomers - Silicone/N.A.  
 Retainer - Buna/N.A.
5. NAVSEA approved; Dwg 803-698-3506.
6. Metric dimensions (mm) are indicated in parentheses.